

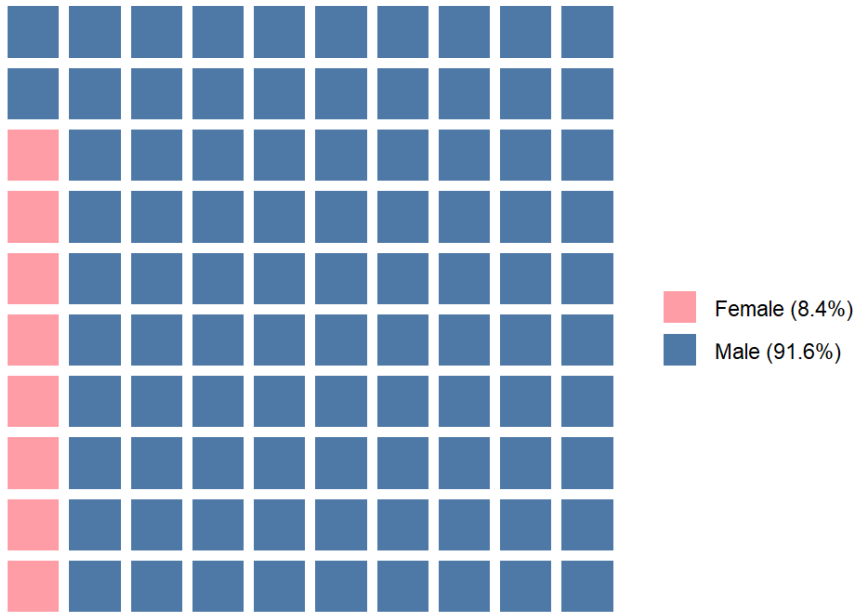


Monthly Statistical Factsheet

Nevada Department of Corrections
September 30, 2023

Operational Statistics

Total Population by Gender



NDOC Staffing and Institutions ¹

	Amount
Total Department Authorized FTEs	1879
Total Department Active FTEs	1219
Number of Actively Open Adult Institutions	17

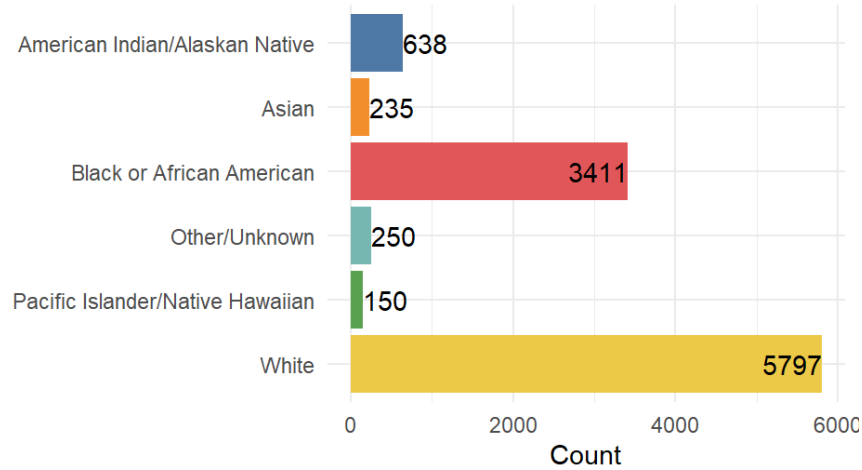
Current Capacity and In-House Count by Gender ²

	Total Capacity	Current Count
Female	1206	823
Male	10721	9282
Total	11927	10105



Demographics

Total Population by Race



Count of Offenders by Race

Race	Count	Percent
American Indian/Alaskan Native	638	6.1%
Asian	235	2.2%
Black or African American	3411	32.5%
Other/Unknown	250	2.4%
Pacific Islander/Native Hawaiian	150	1.4%
White	5797	55.3%
Total	10481	100.0%

Count of Offenders by Age and Gender

Gender	24 and below	25-34	35-44	45-54	55+	Total
Female	44	293	312	132	104	885
Male	813	2831	2799	1587	1566	9596
Total	857	3124	3111	1719	1670	10481

Count of Offenders by Ethnicity

Hispanic/Latino Origin	Count	Percent
No	7441	71.0%
Unknown	292	2.8%
Yes	2748	26.2%
Total	10481	100.0%



Demographics and Population Counts

Mean and Median Ages ³

	Mean	Median	Mean	Median	Mean	Median
Female	39.30	37	36.79	35	37.62	36
Male	40.39	38	36.76	35	38.77	37

Population Growth

	YTD	Monthly
Male	97	19
Female	36	9
Total	133	28

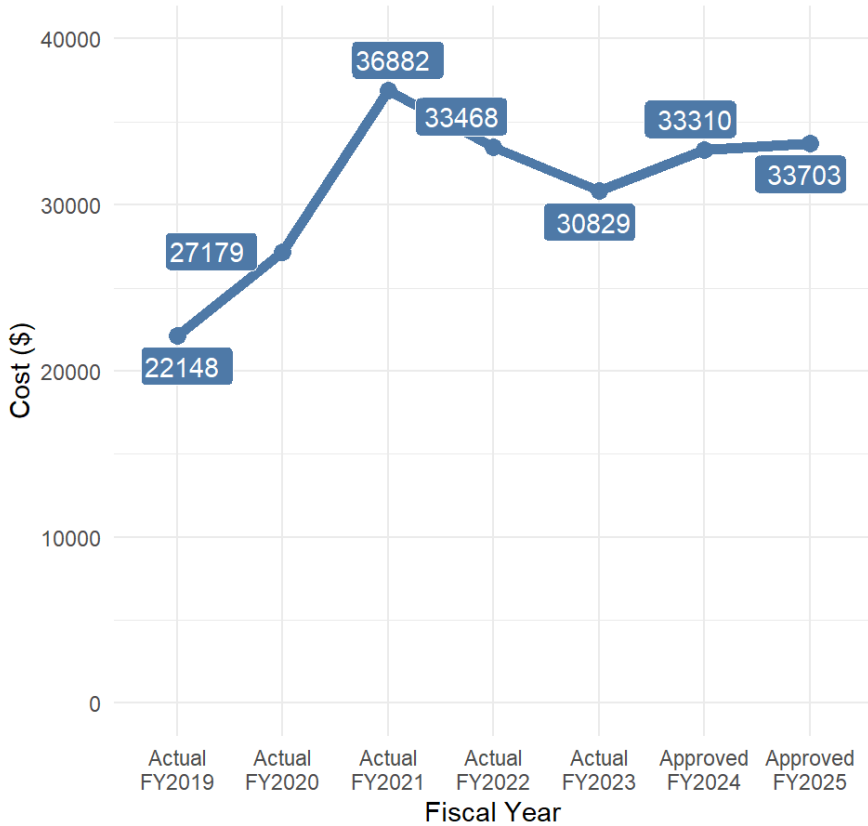
Offender Population ⁴

	Count
Total Population	10481
In-House Population	10105



Cost per Offender

Average Annual Cost per Offender



Average Annual Cost per Offender ⁵

Year	Cost per offender
Actual FY2019	22148
Actual FY2020	27179
Actual FY2021	36882
Actual FY2022	33468
Actual FY2023	30829
Approved FY2024	33310
Approved FY2025	33703

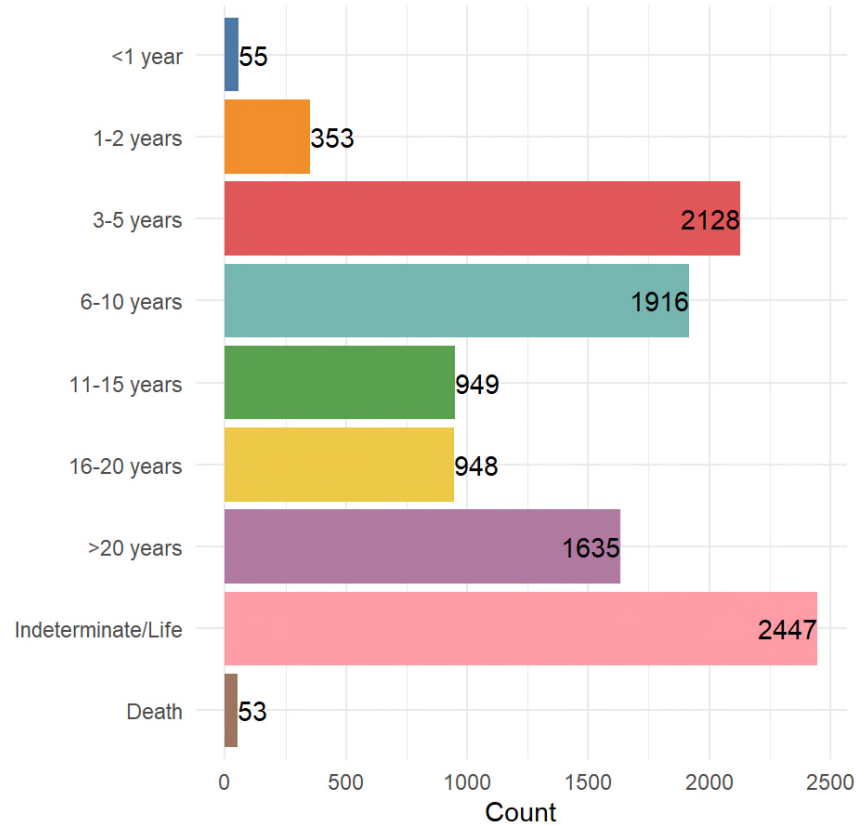
Average Daily Operating Rate per Offender ⁶

	Cost
Institutions	\$65.15
Remote Camps	\$72.99
Non-Remote Camps	\$39.40
Transitional Housing	\$60.26
Overall Cost	\$63.80
Overall Cost (with Medical, Program, Administration Costs)	\$91.09



Custody and Sentencing Statistics

Total Population by Sentence Length



In-House Count by Custody Level ⁷

Custody Level	Count
Close, Maximum, & Unassigned	1662
Community Trustee & Minimum	1818
Medium	6625
Total	10105

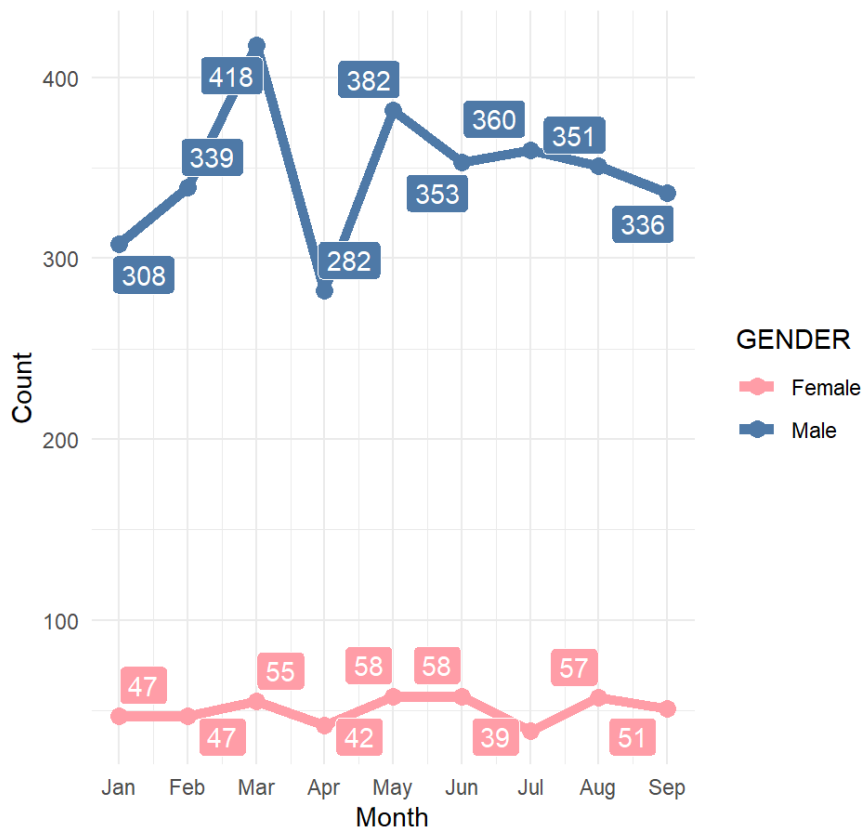
Count by Sentence Length ⁸

Sentence Length	Count
<1 year	55
1-2 years	353
3-5 years	2128
6-10 years	1916
11-15 years	949
16-20 years	948
>20 years	1635
Indeterminate/Life	2447
Death	53



Admissions

Admissions by Gender (YTD)

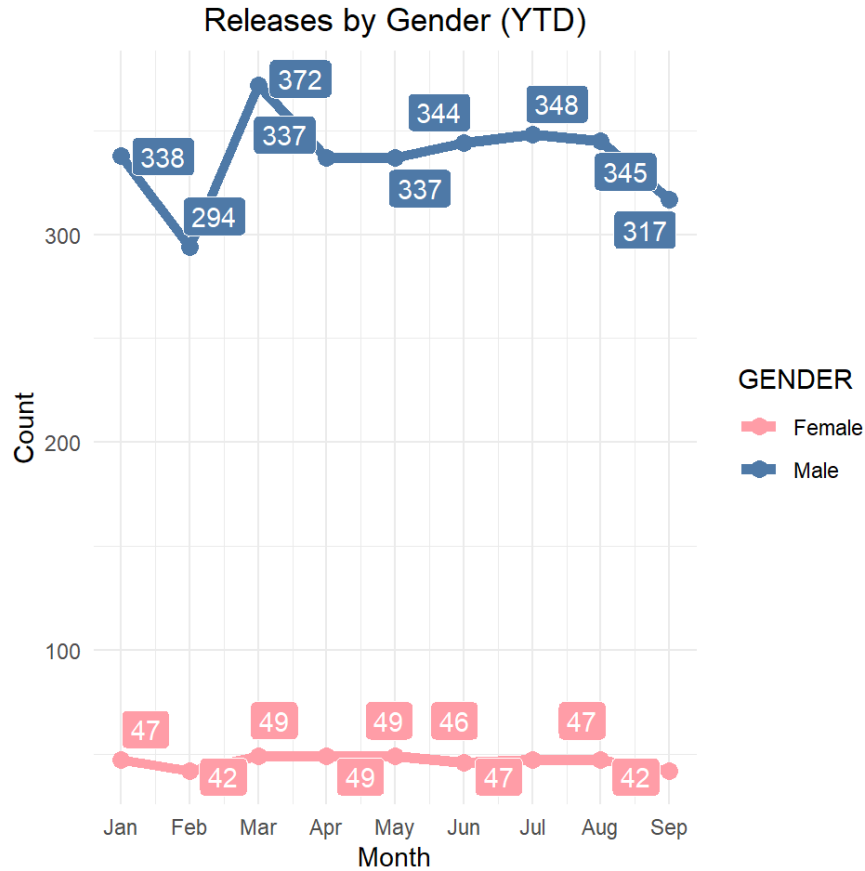


Admissions Calendar Year-to-Date ⁹

	YTD	Current Month	Previous Month	Difference
Male	3129	336	351	-15
Female	454	51	57	-6
Total	3583	387	408	-21



Releases



Releases Calendar Year-to-Date ¹⁰

	YTD	Current Month	Previous Month	Difference
Male	3032	317	345	-28
Female	418	42	47	-5
Total	3450	359	392	-33



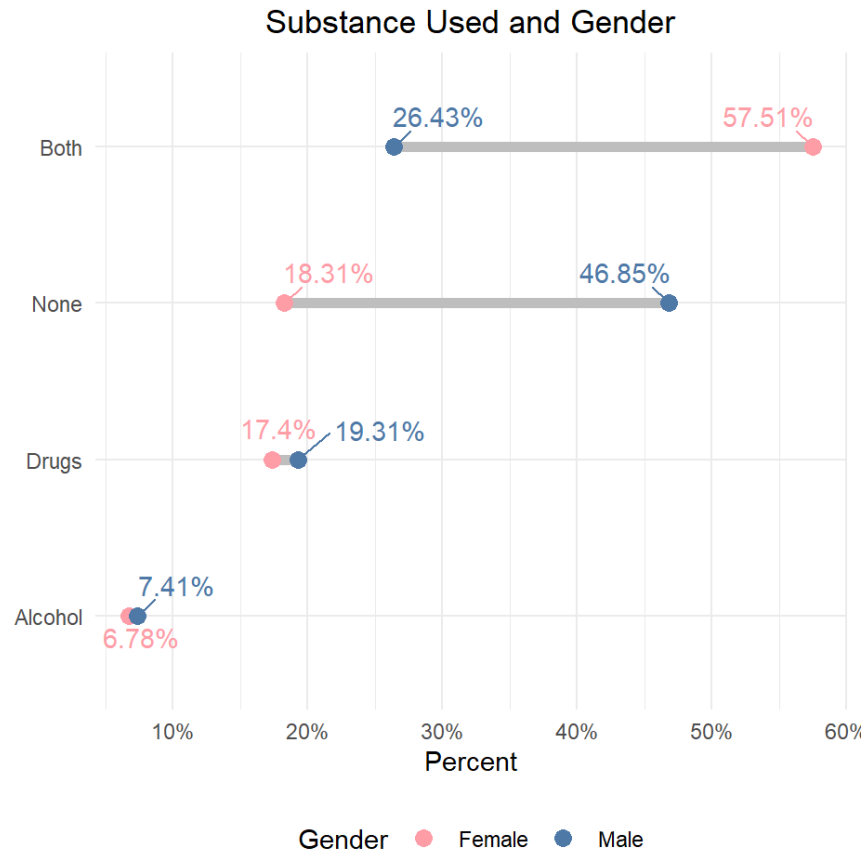
Offense Group Statistics

Offense Group - Admissions, Releases, and Offenders on Parole [11](#) [12](#)

Offense Group	Admissions			Releases			Offenders on Parole	
	Female	Male	Total	Female	Male	Total	Total	Percent (%)
Drug	74	369	443	78	407	485	114	2.7%
DUI	38	116	154	22	95	117	511	12.1%
Other	40	432	472	33	325	358	343	8.1%
Property	185	859	1044	171	834	1005	732	17.3%
Sex	5	220	225	3	268	271	947	22.3%
Violence	112	1133	1245	111	1103	1214	1593	37.6%
Total	454	3129	3583	418	3032	3450	4240	100.0%



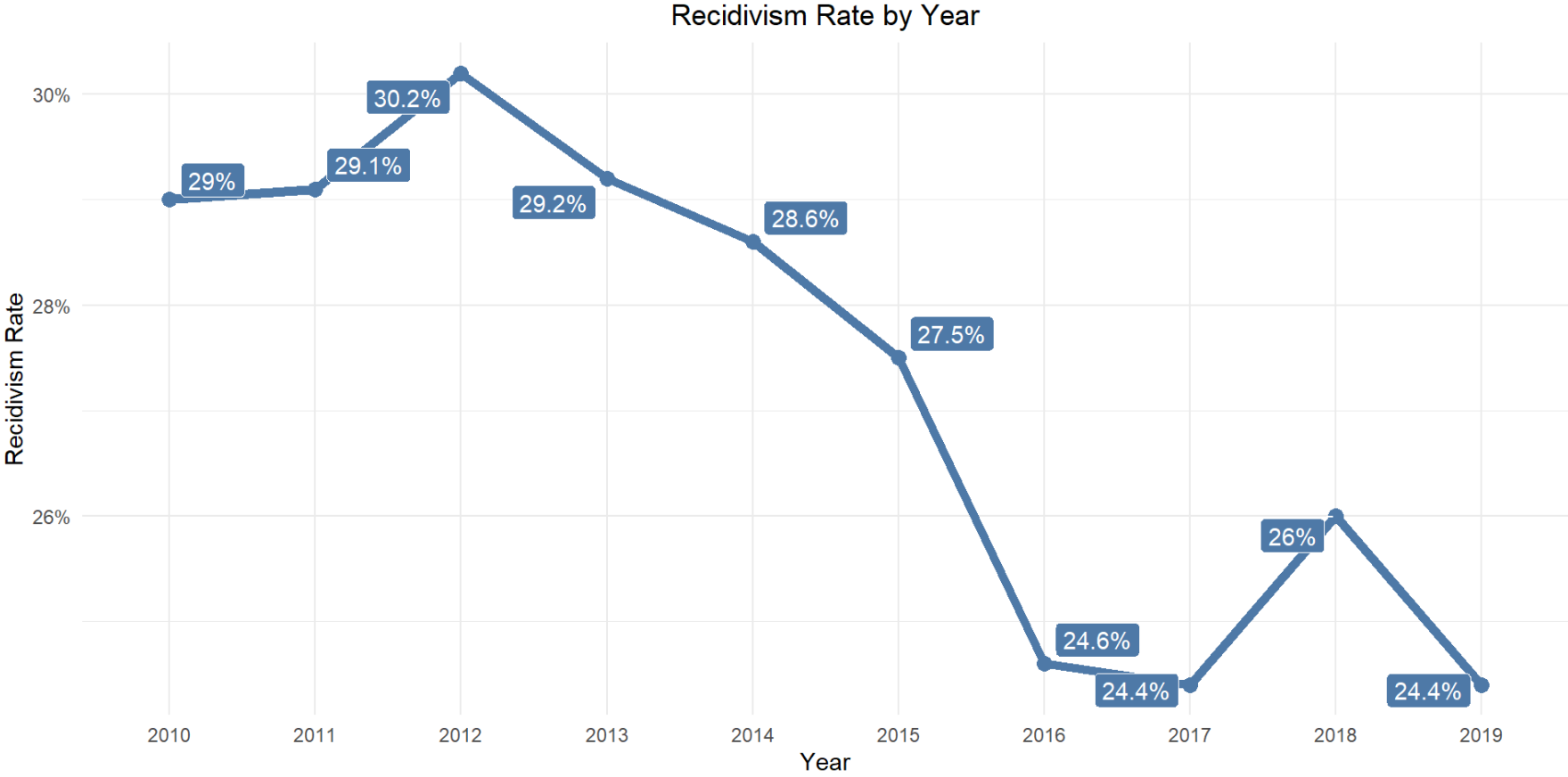
Substance Use Statistics



Substance Use History	Female	Male	Total
Alcohol Factor in Crime	36	449	485
Alcohol Occasional Use	6	125	131
Alcohol Serious Use	18	137	155
Both Factor in Crime	165	1043	1208
Both Occasional Use	20	248	268
Both Serious Use	324	1245	1569
Drugs Factor in Crime	69	1234	1303
Drugs Occasional Use	3	69	72
Drugs Serious Use	82	550	632
None	162	4496	4658
Total	885	9596	10481



Recidivism Statistics



Residential Confinement - 184 Program

Month	Applied	Accepted	Assigned	Failed/Denied/Released	Applied	Accepted	Assigned	Failed/Denied/Released
January	13	3	56	3	3	1	19	0
February	9	0	55	-1	3	0	18	-1
March	4	1	53	-3	6	3	20	-1
April	7	2	51	-4	3	0	18	-2
May	9	2	48	-5	5	2	18	-2
June	18	1	47	-2	0	0	18	0
July	25	2	51	2	3	1	21	2
August	27	7	58	0	4	0	26	5
September	16	0	59	1	4	3	26	-3
October	0	0	0	0	0	0	0	0
November	0	0	0	0	0	0	0	0
December	0	0	0	0	0	0	0	0



Residential Confinement - 298 Program

Month	Applied	Accepted	Assigned	Failed/Denied/Released	Applied	Accepted	Assigned	Failed/Denied/Released
January	1	0	0	0	0	0	0	0
February	0	0	0	0	0	0	0	0
March	0	0	0	0	0	0	0	0
April	0	0	0	0	0	0	0	0
May	1	0	0	0	0	0	0	0
June	0	0	0	0	0	0	0	0
July	0	1	1	0	0	0	0	0
August	0	0	1	0	0	0	0	0
September	0	0	1	0	0	0	0	0
October	0	0	0	0	0	0	0	0
November	0	0	0	0	0	0	0	0
December	0	0	0	0	0	0	0	0



Residential Confinement - 305 Program

Month	Applied	Accepted	Assigned	Failed/Denied/Released	Applied	Accepted	Assigned	Failed/Denied/Released
January	11	1	38	-2	0	0	7	1
February	9	0	34	-4	2	0	8	1
March	6	0	38	4	3	0	7	-1
April	10	0	41	3	0	0	8	1
May	8	0	39	-2	0	0	10	2
June	12	0	46	7	4	0	8	-2
July	6	0	48	2	1	0	7	-1
August	4	0	47	-1	3	0	9	2
September	4	1	48	0	2	0	10	1
October	0	0	0	0	0	0	0	0
November	0	0	0	0	0	0	0	0
December	0	0	0	0	0	0	0	0



Residential Confinement - 317 Program

Month	Applied	Accepted	Assigned	Failed/Denied/Released	Applied	Accepted	Assigned	Failed/Denied/Released
January	3	0	23	2	5	0	1	-14
February	4	0	22	-1	1	0	18	17
March	5	0	24	2	0	0	19	1
April	7	0	25	1	2	0	20	1
May	6	0	26	1	5	0	19	-1
June	9	0	27	1	3	0	18	-1
July	2	0	27	0	1	0	15	-3
August	5	0	28	1	1	0	16	1
September	2	0	27	-1	4	0	13	-3
October	0	0	0	0	0	0	0	0
November	0	0	0	0	0	0	0	0
December	0	0	0	0	0	0	0	0



Residential Confinement Totals

	Applied	Accepted	Assigned	Denied/Failed/Released
RC 184 Program	159	28	73.56	-11
RC 298 Program	2	1	0.33	0
RC 305 Program	85	2	50.33	11
RC 317 Program	65	0	40.89	4
All Programs	311	31	165.11	4

Note: The values given for 'Assigned' are monthly averages for the year-to-date, while the rest are totals for the year-to-date.



Footnotes (1/3)

Note: The figures in this report involve estimates from live data extracted from a data warehouse. Thus, select distributions may not add up to 100% due to rounding or may not equal to the totals in published reports. Report run dates for select statistical information may affect totals and cause them not to balance to the actual population at month end until fully reconciled.

Unless otherwise stated, all data is derived from the NOTIS data warehouse, and includes all offenders under NDOC jurisdiction.

- [1]: Data for FTEs (Full-Time Equivalent Positions) is from NDOC Human Resources. The number of institutions includes only those which currently house offenders; closed and shuttered facilities are excluded.
- [2]: NDOC Capacity Analysis Report 202212-CA-82. The current count gives the in-house population.
- [3]: Admissions and Releases data is derived from the NOTIS Web Admissions and Releases report. This includes all admissions and releases from the current calendar year-to-date.



Footnotes (2/3)

- [4]: Total Population excludes offenders which are currently on parole. In-house Population only counts those who are in NDOC institutions, or are temporarily at jails or hospitals.
- [5]: NDOC Fiscal Services, Approved Budget. The rate per correctional site is exclusive of medical, administrative, and correctional program costs.
- [6]: NDOC Fiscal Services Division, Operating Cost per Inmate History.
- [7]: This only includes in-house offenders.
- [8]: The number of offenders per sentence length category is retrieved from the OMDSL B report in NOTIS production and includes the total population.
- [9]: Admissions data is derived from the NOTIS Web Admissions and Releases report.
- [10]: Releases data is derived from the NOTIS Web Admissions and Releases report.



Footnotes (3/3)

- [11]: This distribution is derived from data from the NOTIS data warehouse. This only includes prisoners which are currently on parole. Parole information is from Nevada Division of Parole and Probation.
- [12]: Admissions and Releases data is derived from the NOTIS Web Admissions and Releases report. This includes all admissions and releases from the current calendar year-to-date.
- [13]: The recidivism rate at NDOC represents the proportion of offenders that are re-incarcerated within three years of release. This excludes offenders who were released from non-correctional facilities, were released from other jurisdictions, or were held by NDOC for other jurisdictions. This figure is not adjusted for deaths after release.
- [14]: Residential Confinement data is derived from a report maintained by the NDOC Offender Management Division Case Work Specialists.

