

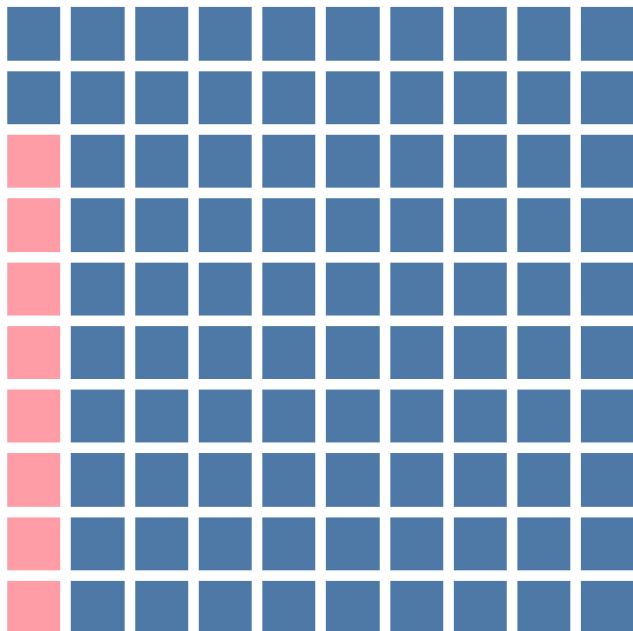


Monthly Statistical Factsheet

Nevada Department of Corrections
August 31, 2023

Operational Statistics

Total Population by Gender



■ Female (8.4%)
■ Male (91.6%)

NDOC Staffing and Institutions ¹

	Amount
Total Department Authorized FTEs	1879
Total Department Active FTEs	1205
Number of Actively Open Adult Institutions	17

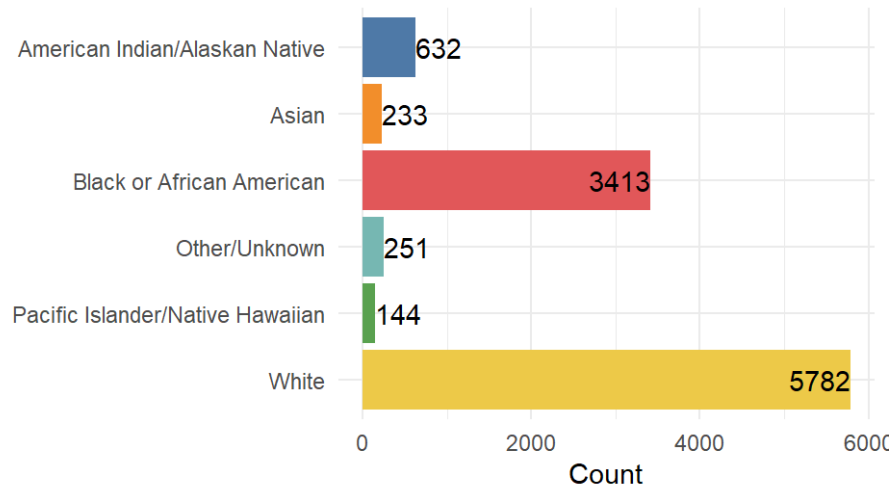
Current Capacity and In-House Count by Gender ²

	Total Capacity	Current Count
Female	1206	813
Male	10721	9271
Total	11927	10084



Demographics

Total Population by Race



Count of Offenders by Race

Race	Count	Percent
American Indian/Alaskan Native	632	6.0%
Asian	233	2.2%
Black or African American	3413	32.6%
Other/Unknown	251	2.4%
Pacific Islander/Native Hawaiian	144	1.4%
White	5782	55.3%
Total	10455	100.0%

Count of Offenders by Age and Gender

Gender	24 and below	25-34	35-44	45-54	55+	Total
Female	43	292	308	133	101	877
Male	817	2828	2779	1589	1565	9578
Total	860	3120	3087	1722	1666	10455

Count of Offenders by Ethnicity

Hispanic/Latino Origin	Count	Percent
No	7424	71.0%
Unknown	292	2.8%
Yes	2739	26.2%
Total	10455	100.0%



Demographics and Population Counts

Mean and Median Ages ³

	Mean	Median	Mean	Median	Mean	Median
Female	39.23	37	36.73	35	37.68	36
Male	40.37	38	36.69	35	38.72	36

Population Growth

	YTD	Monthly
Male	79	7
Female	28	11
Total	107	18

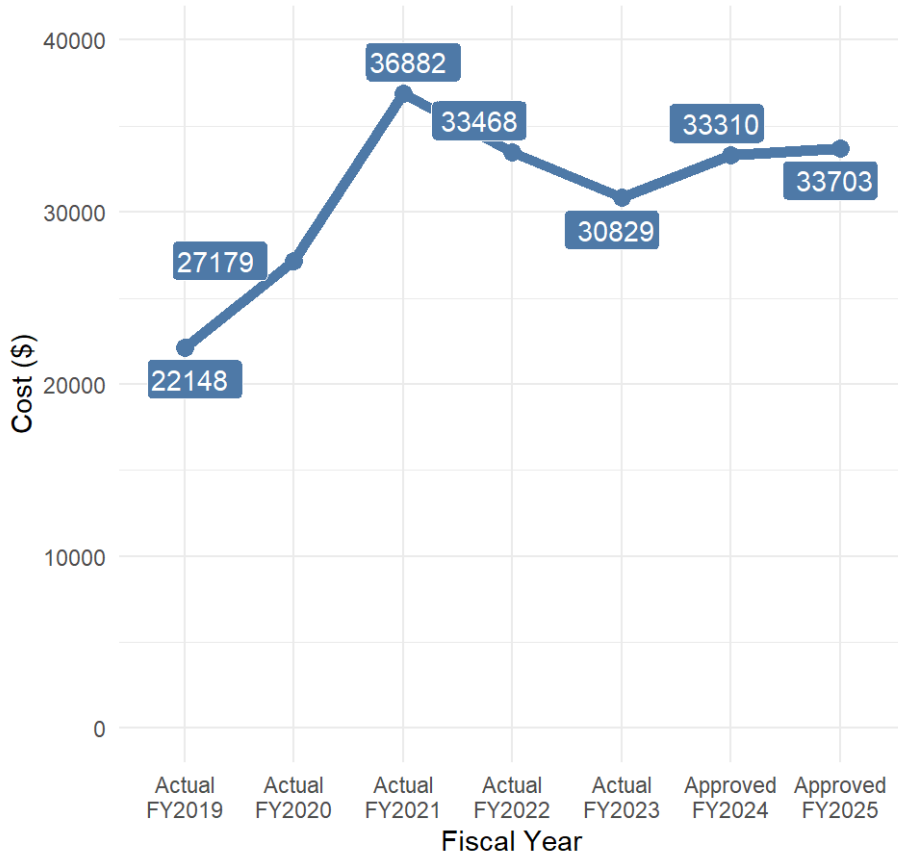
Offender Population ⁴

	Count
Total Population	10455
In-House Population	10084



Cost per Offender

Average Annual Cost per Offender



Average Annual Cost per Offender ⁵

Year	Cost per offender
Actual FY2019	22148
Actual FY2020	27179
Actual FY2021	36882
Actual FY2022	33468
Actual FY2023	30829
Approved FY2024	33310
Approved FY2025	33703

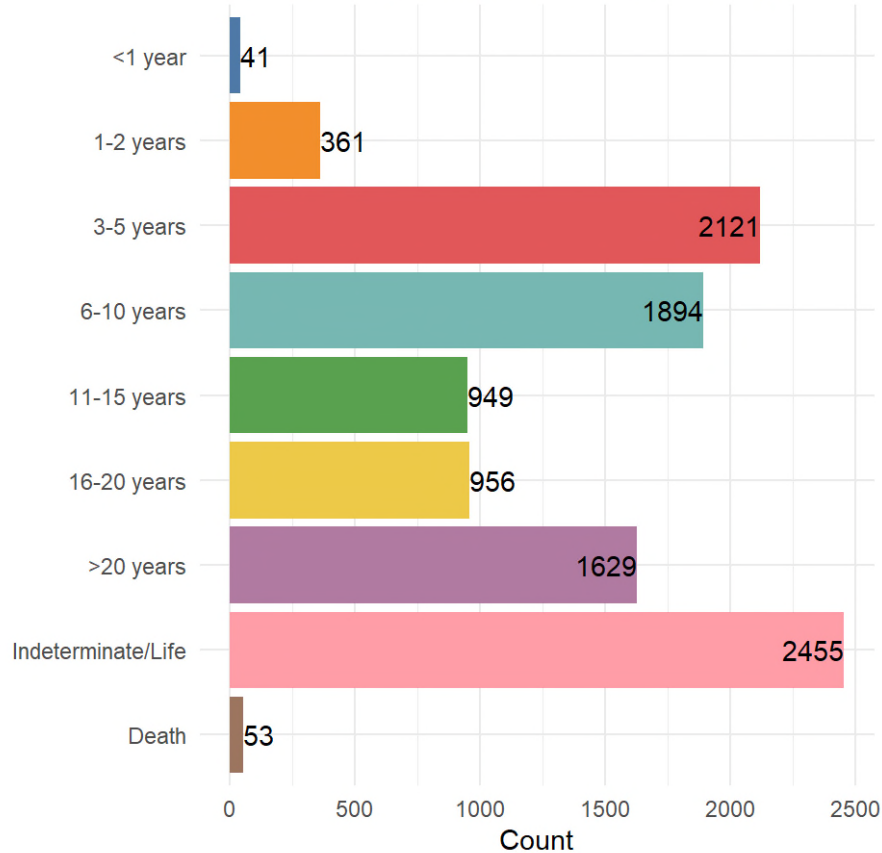
Average Daily Operating Rate per Offender ⁶

	Cost
Institutions	\$65.15
Remote Camps	\$72.99
Non-Remote Camps	\$39.40
Transitional Housing	\$60.26
Overall Cost	\$63.80
Overall Cost (with Medical, Program, Administration Costs)	\$91.09



Custody and Sentencing Statistics

Total Population by Sentence Length



In-House Count by Custody Level ⁷

Custody Level	Count
Close, Maximum, & Unassigned	1648
Community Trustee & Minimum	1808
Medium	6628
Total	10084

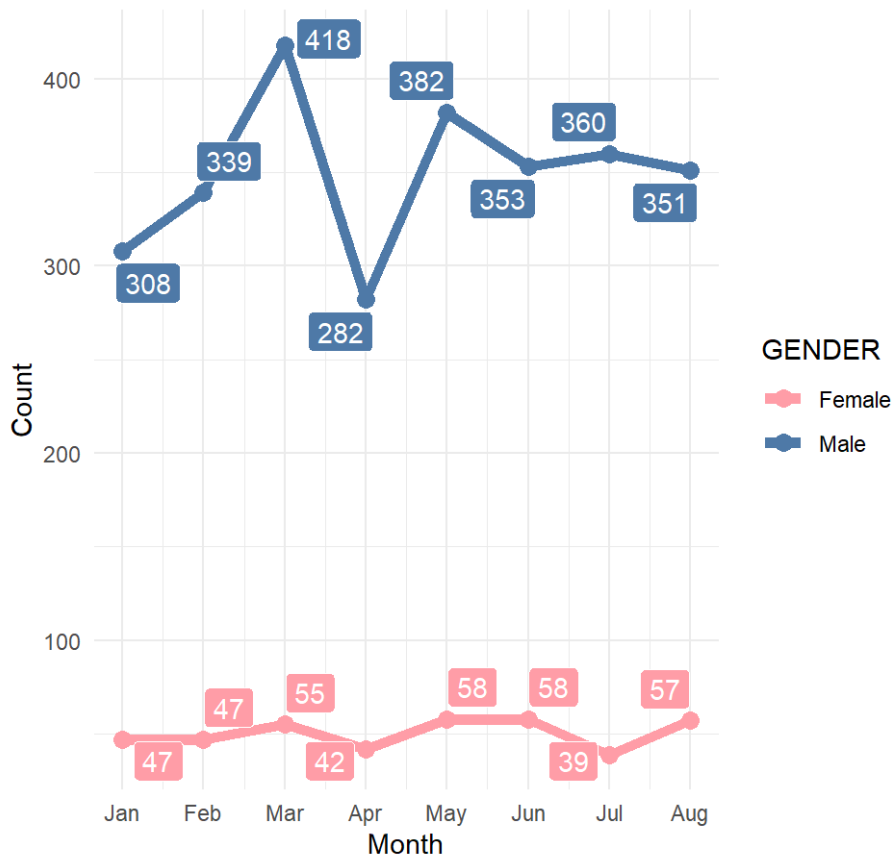
Count by Sentence Length ⁸

Sentence Length	Count
<1 year	41
1-2 years	361
3-5 years	2121
6-10 years	1894
11-15 years	949
16-20 years	956
>20 years	1629
Indeterminate/Life	2455
Death	53



Admissions

Admissions by Gender (YTD)



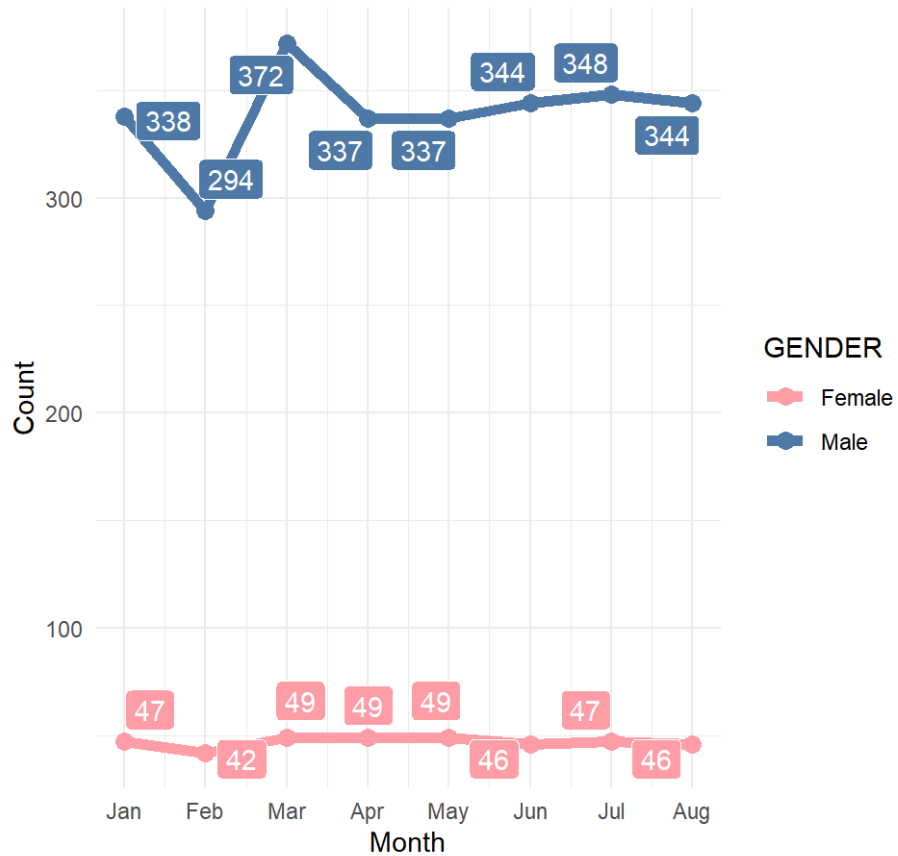
Admissions Calendar Year-to-Date ⁹

	YTD	Current Month	Previous Month	Difference
Male	2793	351	360	-9
Female	403	57	39	18
Total	3196	408	399	9



Releases

Releases by Gender (YTD)



Releases Calendar Year-to-Date ¹⁰

	YTD	Current Month	Previous Month	Difference
Male	2714	344	348	-4
Female	375	46	47	-1
Total	3089	390	395	-5



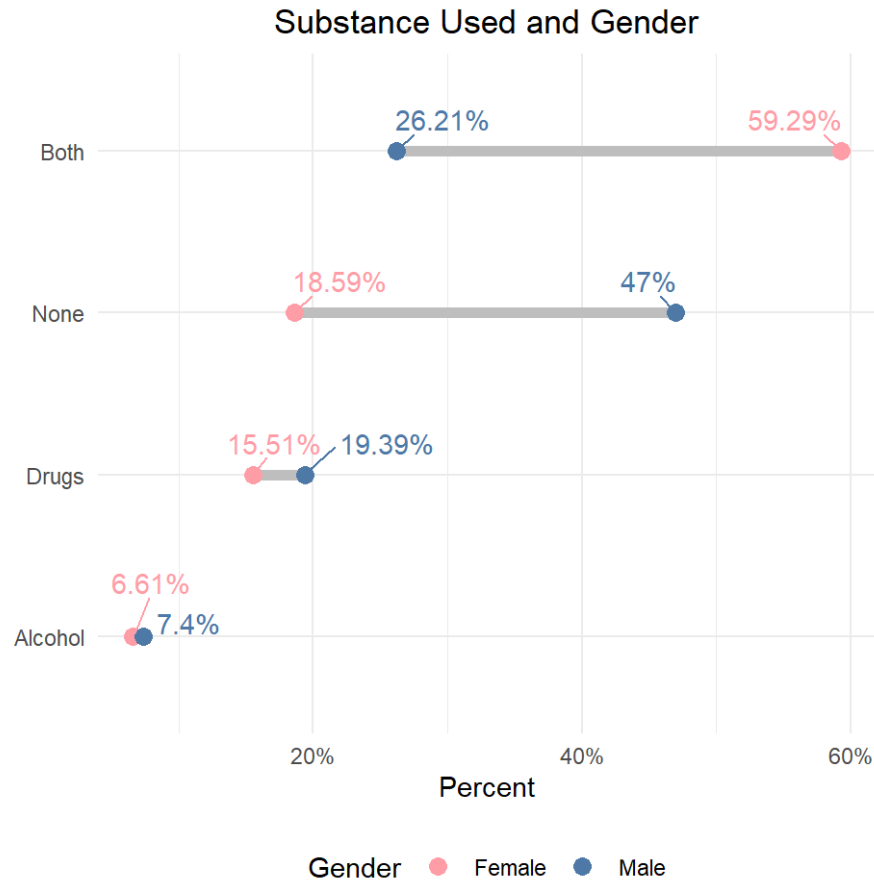
Offense Group Statistics

Offense Group - Admissions, Releases, and Offenders on Parole 11 12

Offense Group	Admissions			Releases			Offenders on Parole	
	Female	Male	Total	Female	Male	Total	Total	Percent (%)
Drug	67	332	399	67	372	439	110	2.6%
DUI	35	104	139	20	80	100	515	12.2%
Other	39	364	403	29	291	320	339	8.0%
Property	162	772	934	150	736	886	709	16.8%
Sex	5	202	207	3	241	244	936	22.2%
Violence	95	1019	1114	106	994	1100	1611	38.2%
Total	403	2793	3196	375	2714	3089	4220	100.0%



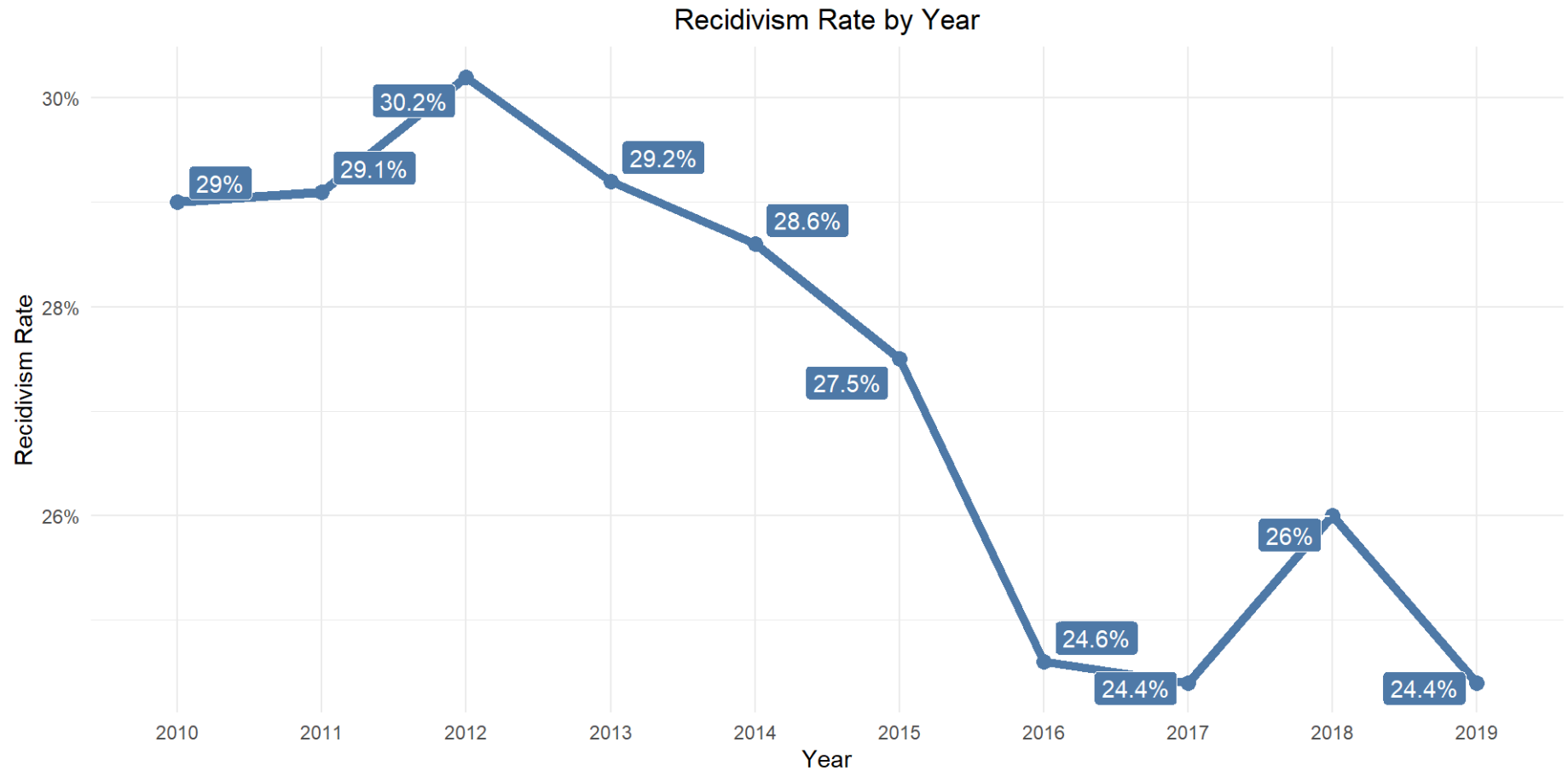
Substance Use Statistics



Substance Use History	Female	Male	Total
Alcohol Factor in Crime	36	453	489
Alcohol Occasional Use	6	121	127
Alcohol Serious Use	16	135	151
Both Factor in Crime	169	1045	1214
Both Occasional Use	21	245	266
Both Serious Use	330	1220	1550
Drugs Factor in Crime	65	1243	1308
Drugs Occasional Use	3	66	69
Drugs Serious Use	68	548	616
None	163	4502	4665
Total	877	9578	10455



Recidivism Statistics



Residential Confinement - 184 Program

Month	Applied	Accepted	Assigned	Failed/Denied/Released	Applied	Accepted	Assigned	Failed/Denied/Released
January	13	3	56	3	3	1	19	0
February	9	0	55	-1	3	0	18	-1
March	4	1	53	-3	6	3	20	-1
April	7	2	51	-4	3	0	18	-2
May	9	2	48	-5	5	2	18	-2
June	18	1	47	-2	0	0	18	0
July	25	2	51	2	3	1	21	2
August	27	7	58	0	4	0	26	5
September	0	0	0	0	0	0	0	0
October	0	0	0	0	0	0	0	0
November	0	0	0	0	0	0	0	0
December	0	0	0	0	0	0	0	0



Residential Confinement - 298 Program

Month	Applied	Accepted	Assigned	Failed/Denied/Released	Applied	Accepted	Assigned	Failed/Denied/Released
January	1	0	0	0	0	0	0	0
February	0	0	0	0	0	0	0	0
March	0	0	0	0	0	0	0	0
April	0	0	0	0	0	0	0	0
May	1	0	0	0	0	0	0	0
June	0	0	0	0	0	0	0	0
July	0	1	1	0	0	0	0	0
August	0	0	1	0	0	0	0	0
September	0	0	0	0	0	0	0	0
October	0	0	0	0	0	0	0	0
November	0	0	0	0	0	0	0	0
December	0	0	0	0	0	0	0	0



Residential Confinement - 305 Program

Month	Applied	Accepted	Assigned	Failed/Denied/Released	Applied	Accepted	Assigned	Failed/Denied/Released
January	11	1	38	-2	0	0	7	1
February	9	0	34	-4	2	0	8	1
March	6	0	38	4	3	0	7	-1
April	10	0	41	3	0	0	8	1
May	8	0	39	-2	0	0	10	2
June	12	0	46	7	4	0	8	-2
July	6	0	48	2	1	0	7	-1
August	4	0	47	-1	3	0	9	2
September	0	0	0	0	0	0	0	0
October	0	0	0	0	0	0	0	0
November	0	0	0	0	0	0	0	0
December	0	0	0	0	0	0	0	0



Residential Confinement - 317 Program

Month	Applied	Accepted	Assigned	Failed/Denied/Released	Applied	Accepted	Assigned	Failed/Denied/Released
January	3	0	23	2	5	0	1	-14
February	4	0	22	-1	1	0	18	17
March	5	0	24	2	0	0	19	1
April	7	0	25	1	2	0	20	1
May	6	0	26	1	5	0	19	-1
June	9	0	27	1	3	0	18	-1
July	2	0	27	0	1	0	15	-3
August	5	0	28	1	1	0	16	1
September	0	0	0	0	0	0	0	0
October	0	0	0	0	0	0	0	0
November	0	0	0	0	0	0	0	0
December	0	0	0	0	0	0	0	0



Residential Confinement Totals

	Applied	Accepted	Assigned	Denied/Failed/Released
RC 184 Program	139	25	72.12	-9
RC 298 Program	2	1	0.25	0
RC 305 Program	79	1	49.38	10
RC 317 Program	59	0	41.00	8
All Programs	279	27	162.75	9

Note: The values given for 'Assigned' are monthly averages for the year-to-date, while the rest are totals for the year-to-date.



Footnotes (1/3)

Note: The figures in this report involve estimates from live data extracted from a data warehouse. Thus, select distributions may not add up to 100% due to rounding or may not equal to the totals in published reports. Report run dates for select statistical information may affect totals and cause them not to balance to the actual population at month end until fully reconciled.

Unless otherwise stated, all data is derived from the NOTIS data warehouse, and includes all offenders under NDOC jurisdiction.

- [1]: Data for FTEs (Full-Time Equivalent Positions) is from NDOC Human Resources. The number of institutions includes only those which currently house offenders; closed and shuttered facilities are excluded.
- [2]: NDOC Capacity Analysis Report 202212-CA-82. The current count gives the in-house population.
- [3]: Admissions and Releases data is derived from the NOTIS Web Admissions and Releases report. This includes all admissions and releases from the current calendar year-to-date.



Footnotes (2/3)

- [4]: Total Population excludes offenders which are currently on parole. In-house Population only counts those who are in NDOC institutions, or are temporarily at jails or hospitals.
- [5]: NDOC Fiscal Services, Approved Budget. The rate per correctional site is exclusive of medical, administrative, and correctional program costs.
- [6]: NDOC Fiscal Services Division, Operating Cost per Inmate History.
- [7]: This only includes in-house offenders.
- [8]: The number of offenders per sentence length category is retrieved from the OMDSL B report in NOTIS production and includes the total population.
- [9]: Admissions data is derived from the NOTIS Web Admissions and Releases report.
- [10]: Releases data is derived from the NOTIS Web Admissions and Releases report.



Footnotes (3/3)

- [11]: This distribution is derived from data from the NOTIS data warehouse. This only includes prisoners which are currently on parole. Parole information is from Nevada Division of Parole and Probation.
- [12]: Admissions and Releases data is derived from the NOTIS Web Admissions and Releases report. This includes all admissions and releases from the current calendar year-to-date.
- [13]: The recidivism rate at NDOC represents the proportion of offenders that are re-incarcerated within three years of release. This excludes offenders who were released from non-correctional facilities, were released from other jurisdictions, or were held by NDOC for other jurisdictions. This figure is not adjusted for deaths after release.
- [14]: Residential Confinement data is derived from a report maintained by the NDOC Offender Management Division Case Work Specialists.

