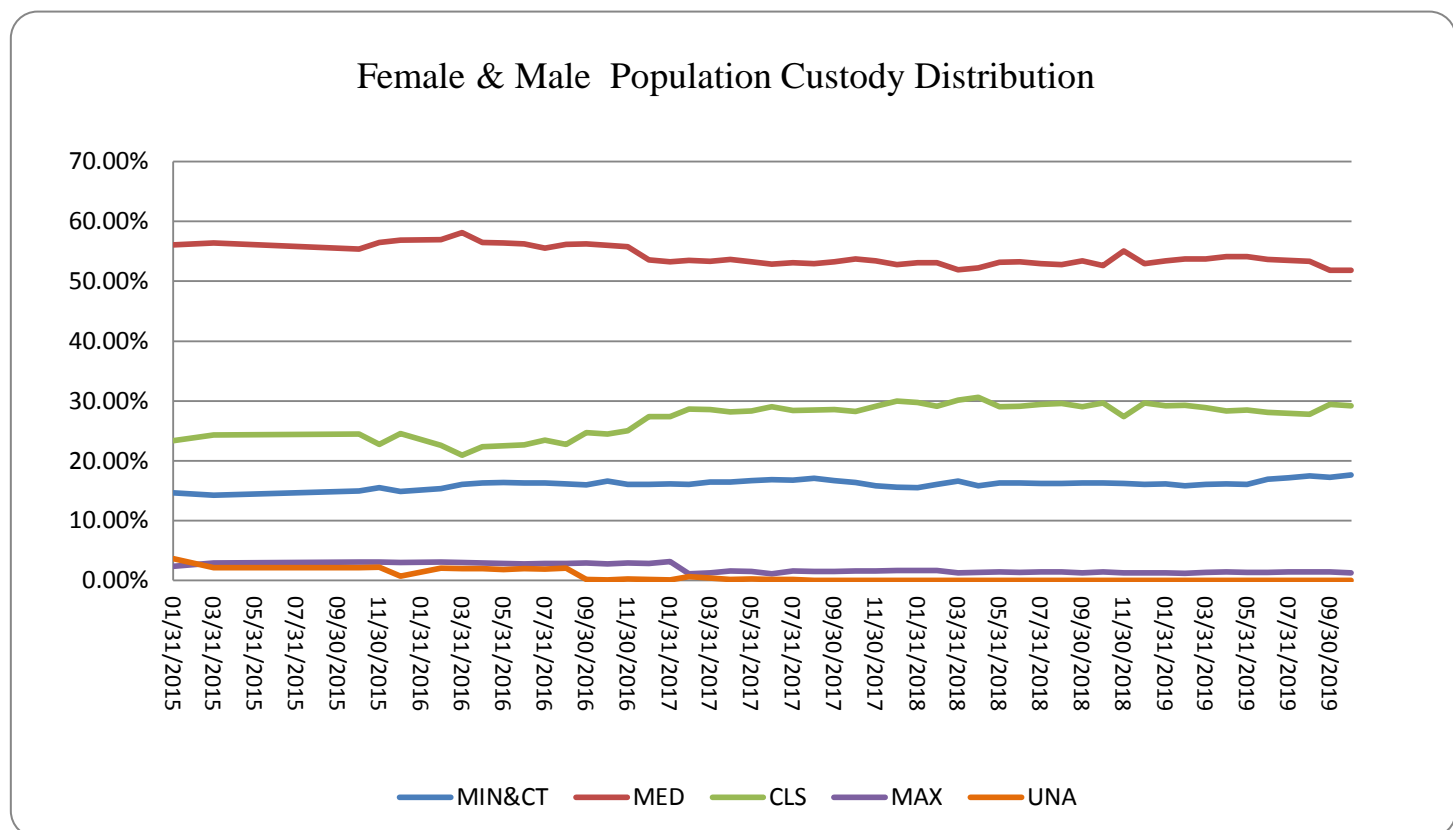
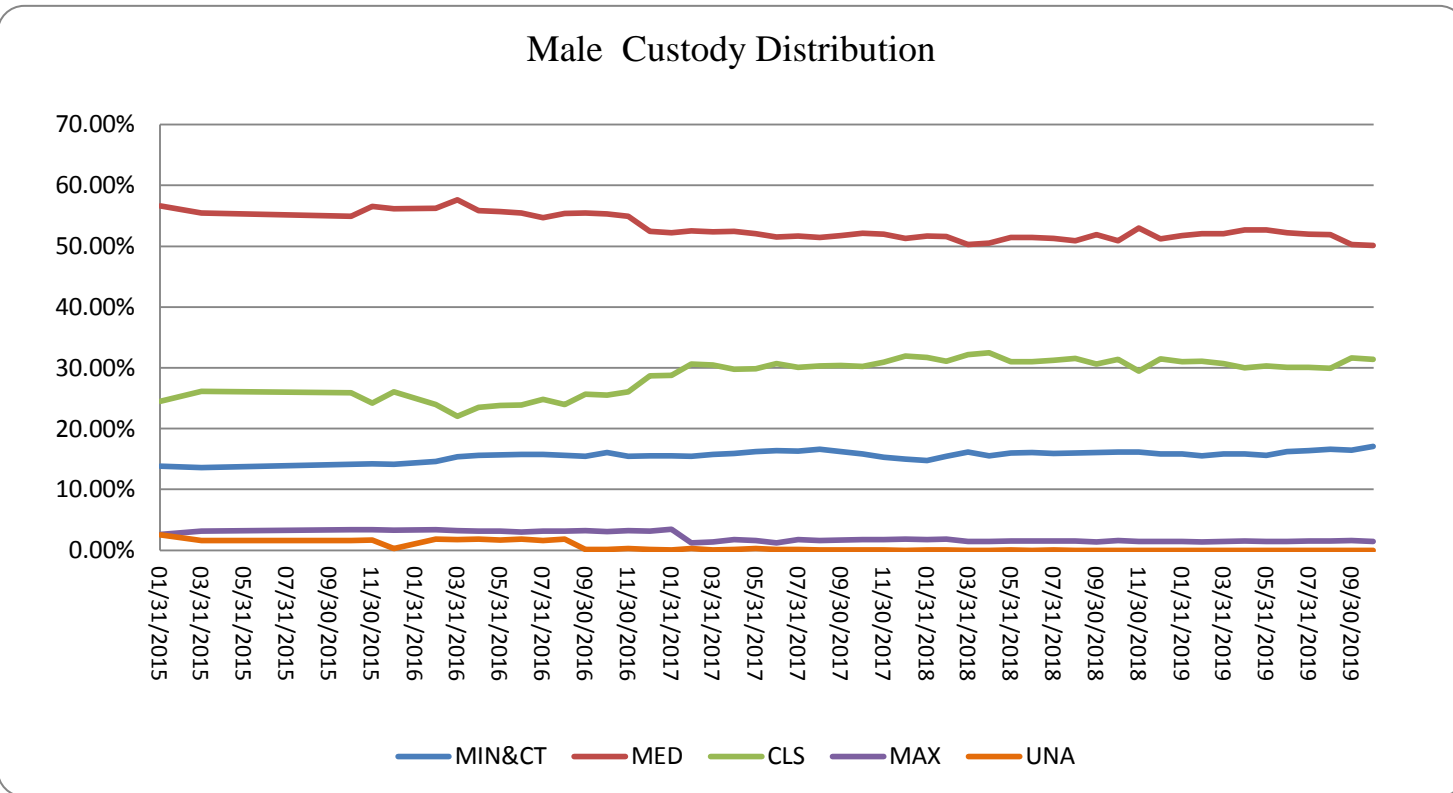
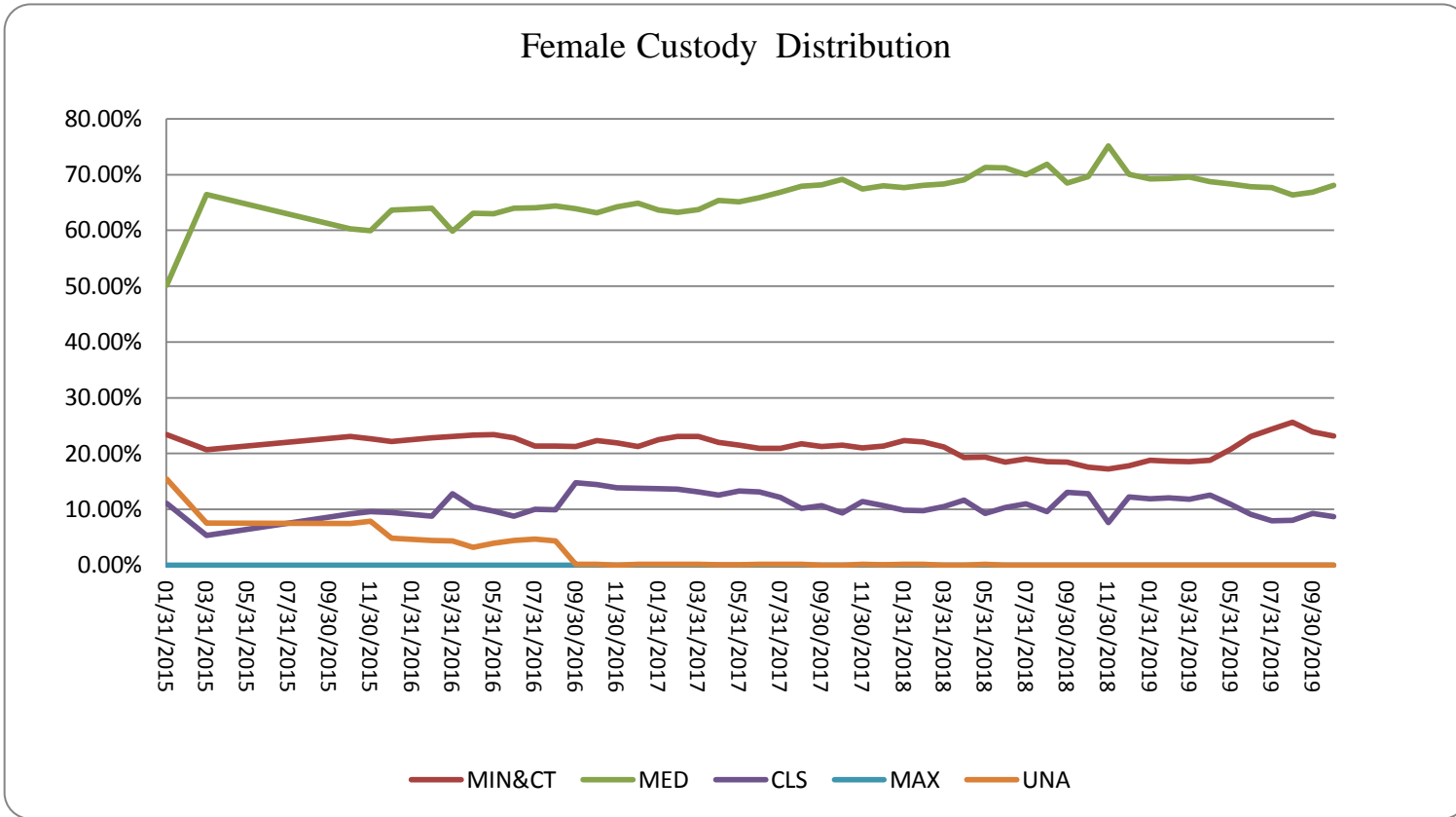


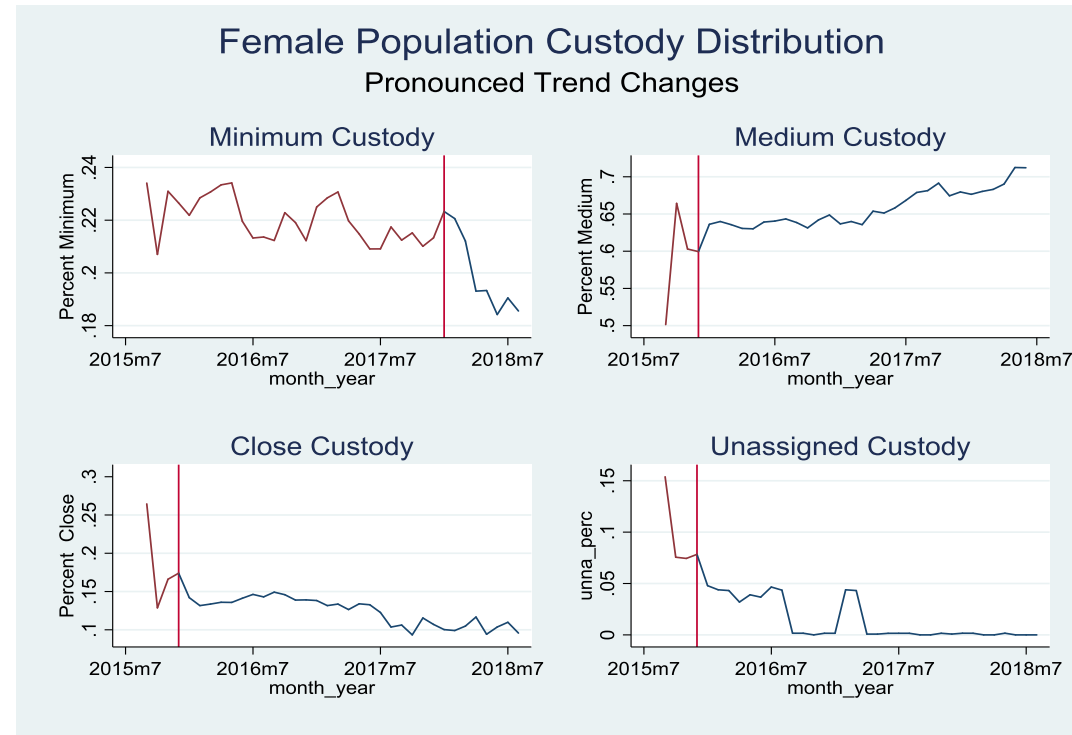
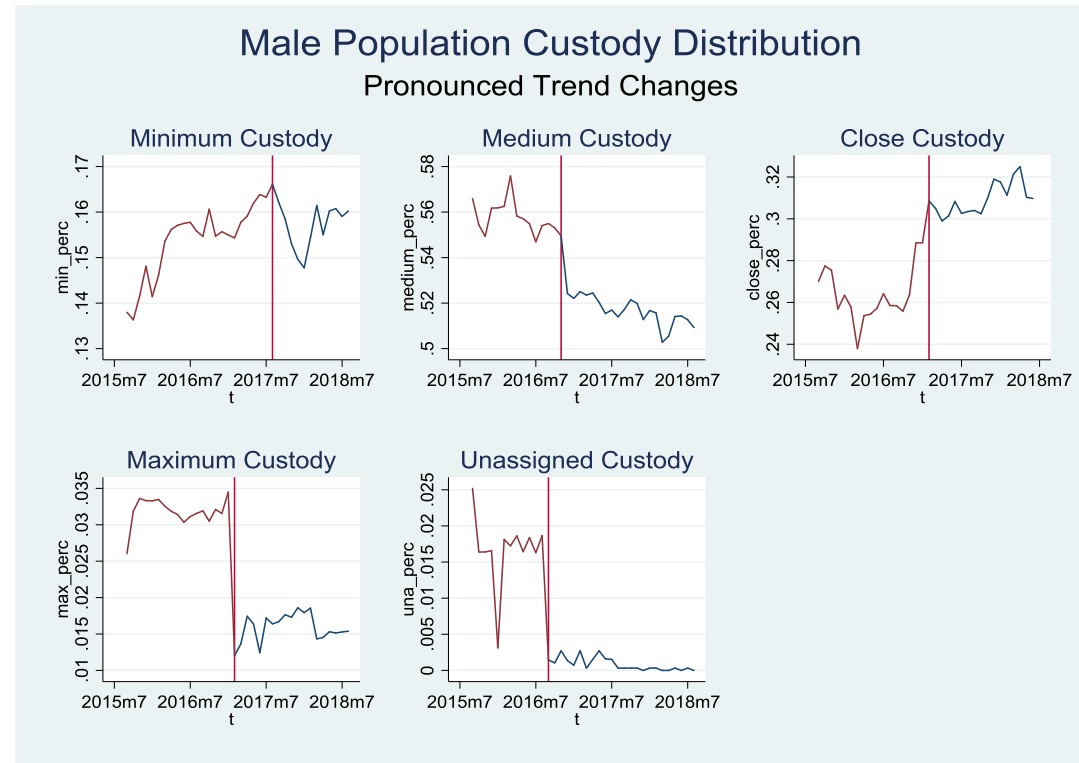
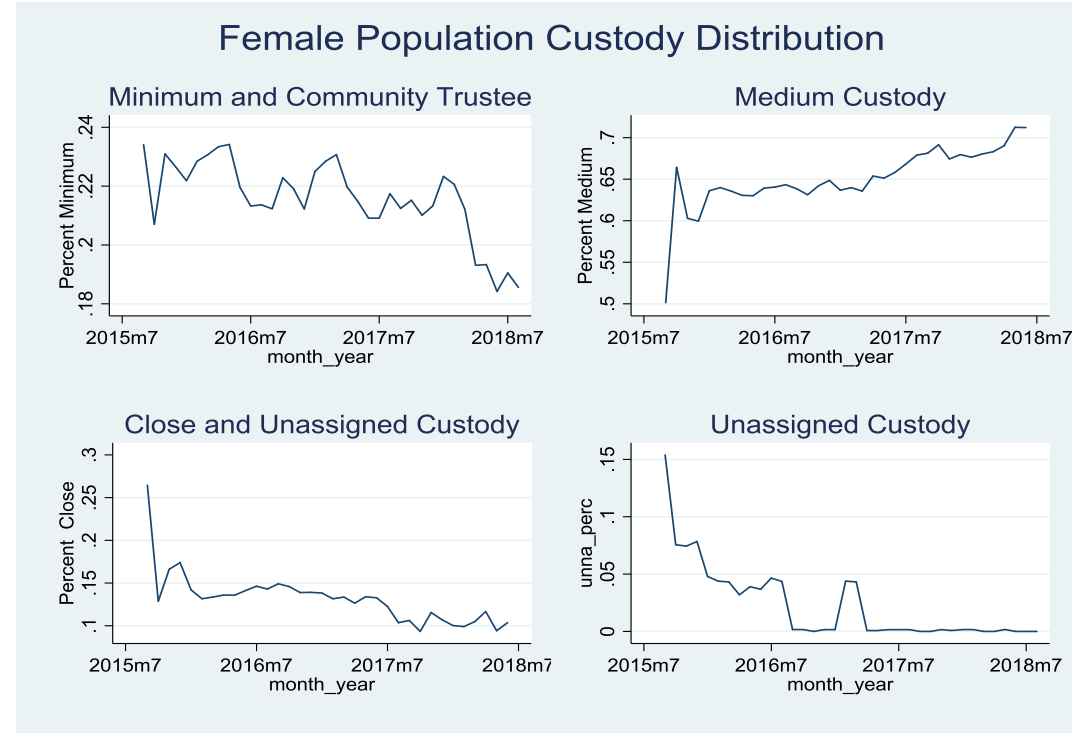
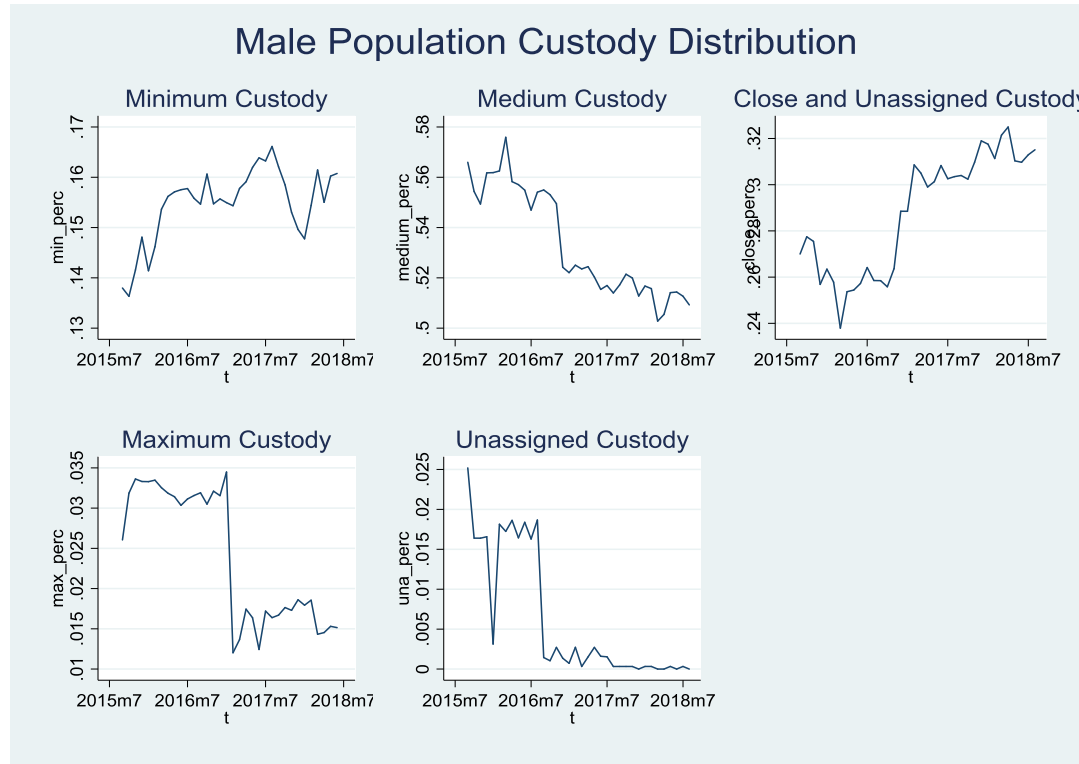
CUSTODY DISTRIBUTION OF THE IN-HOUSE POPULATION AND INDIVIDUALS HOUSED TEMPORARILY IN FACILITIES OUT OF STATE

MALE POPULATION CUSTODY DISTRIBUTION							POPULATION BY CUSTODY LEVEL						CHANGE IN POPULATION BY CUSTODY LEVEL						
DATE	MIN&CT	MED	CLS	MAX	UNA	TOTAL	MIN&CT	MED	CLS	MAX	UNA	TOTAL	MIN&CT	MED	CLS	MAX	UNA	TOTAL	
01/31/2015	13.80%	56.60%	24.48%	2.60%	2.52%	100.00%	1621	6649	2876	306	296	11748							
03/31/2015	13.63%	55.43%	26.11%	3.19%	1.64%	100.00%	1613	6559	3089	377	194	11832	-8	-90	213	71	-102	84	
10/31/2015	14.15%	54.94%	25.91%	3.36%	1.64%	100.00%	1701	6601	3113	404	197	12016	88	42	24	27	3	184	
11/30/2015	14.19%	56.58%	24.20%	3.36%	1.67%	100.00%	1796	6813	2914	404	201	12128	95	212	-199	0	4	112	
12/31/2015	14.14%	56.18%	26.03%	3.33%	0.31%	100.00%	1716	6818	3159	404	38	12135	-80	5	245	0	-163	7	
02/29/2016	14.62%	56.25%	23.97%	3.35%	1.81%	100.00%	1773	6822	2907	406	220	12128	57	4	-252	2	182	-7	
03/31/2016	15.36%	57.59%	22.07%	3.25%	1.72%	100.00%	1898	7114	2726	402	213	12353	125	292	-181	-4	-7	225	
04/30/2016	15.62%	55.83%	23.51%	3.19%	1.86%	100.00%	1937	6923	2915	395	231	12401	39	-191	189	-7	18	48	
05/31/2016	15.71%	55.71%	23.80%	3.14%	1.64%	100.00%	1950	6915	2954	390	204	12413	13	-8	39	-5	-27	12	
06/30/2016	15.75%	55.49%	23.89%	3.03%	1.84%	100.00%	1962	6911	2975	378	229	12455	12	-4	21	-12	25	42	
07/31/2016	15.78%	54.69%	24.79%	3.11%	1.63%	100.00%	1966	6816	3089	388	203	12462	4	-95	114	10	-26	7	
08/31/2016	15.58%	55.41%	23.99%	3.16%	1.87%	100.00%	1945	6916	2994	394	233	12482	-21	100	-95	6	30	20	
9/30/2016	15.47%	55.50%	25.70%	3.19%	0.14%	100.00%	1929	6922	3206	398	18	12473	-16	6	212	4	-215	-9	
10/31/2016	16.06%	55.31%	25.48%	3.05%	0.10%	100.00%	2007	6910	3183	381	13	12494	78	-12	-23	-17	-5	21	
11/30/2016	15.47%	54.95%	26.09%	3.21%	0.27%	100.00%	1937	6880	3267	402	34	12520	-70	-30	84	21	21	26	
12/31/2016	15.57%	52.42%	28.72%	3.16%	0.14%	100.00%	1954	6579	3604	396	17	12550	17	-301	337	-6	-17	30	
1/31/2017	15.50%	52.21%	28.78%	3.45%	0.07%	100.00%	1932	6509	3588	430	9	12468	-22	-70	-16	34	-8	-82	
2/28/2017	15.43%	52.51%	30.59%	1.20%	0.27%	100.00%	1925	6549	3815	150	34	12473	-7	40	227	-280	25	5	
3/31/2017	15.78%	52.35%	30.47%	1.37%	0.03%	100.00%	1975	6553	3814	171	4	12517	50	4	-1	21	-30	44	
4/30/2017	15.91%	52.44%	29.75%	1.74%	0.15%	100.00%	1988	6553	3717	218	19	12495	13	0	-97	47	15	-22	
5/31/2017	16.20%	52.03%	29.86%	1.64%	0.27%	100.00%	2027	6512	3737	205	34	12515	39	-41	20	-13	15	20	
6/30/2017	16.39%	51.54%	30.67%	1.24%	0.16%	100.00%	2043	6426	3824	155	20	12468	16	-86	87	-50	-14	-47	
7/31/2017	16.32%	51.70%	30.11%	1.72%	0.15%	100.00%	2021	6400	3727	213	19	12380	-22	-26	-97	58	-1	-88	
8/31/2017	16.61%	51.40%	30.32%	1.64%	0.03%	100.00%	2068	6398	3774	204	4	12448	47	-2	47	-9	-15	68	
9/30/2017	16.21%	51.72%	30.37%	1.67%	0.03%	100.00%	2009	6411	3764	207	4	12395	-59	13	-10	3	0	-53	
10/31/2017	15.85%	52.15%	30.21%	1.76%	0.03%	100.00%	1958	6442	3732	218	4	12354	-51	31	-32	11	0	-41	
11/30/2017	15.30%	51.99%	30.94%	1.73%	0.03%	100.00%	1884	6401	3809	213	4	12311	-74	-41	77	-5	0	-43	
12/31/2017	14.96%	51.28%	31.90%	1.86%	0.00%	100.00%	1833	6282	3908	228	0	12251	-51	-119	99	15	-4	-60	
1/31/2018	14.78%	51.67%	31.72%	1.79%	0.03%	100.00%	1804	6309	3873	219	4	12209	-29	27	-35	-9	4	-42	
2/28/2018	15.44%	51.57%	31.10%	1.86%	0.03%	100.00%	1880	6280	3787	226	4	12177	76	-29	-86	7	0	-32	
3/31/2018	16.15%	50.28%	32.14%	1.43%	0.00%	100.00%	1972	6141	3926	175	0	12214	92	-139	139	-51	-4	37	
4/30/2018	15.50%	50.55%	32.50%	1.45%	0.00%	100.00%	1888	6156	3958	177	0	12179	-84	15	32	2	0	-35	
5/31/2018	16.02%	51.41%	31.00%	1.53%	0.03%	100.00%	1957	6279	3786	187	4	12213	69	123	-172	10	4	34	
6/30/2018	16.08%	51.44%	30.97%	1.52%	0.00%	100.00%	1963	6281	3782	185	0	12211	6	2	-4	-2	-4	-2	
7/31/2018	15.91%	51.27%	31.26%	1.53%	0.03%	100.00%	1946	6273	3825	187	4	12235	-17	-8	43	2	4	24	
8/31/2018	16.03%	50.93%	31.51%	1.54%	0.00%	100.00%	1968	6254	3870	189	0	12280	22	-19	45	2	-4	46	
9/30/2018	16.10%	51.90%	30.62%	1.38%	0.00%	100.00%	1975	6368	3757	169	0	12269	7	114	-113	-20	0	-12	
10/31/2018	16.18%	50.89%	31.36%	1.57%	0.00%	100.00%	1980	6226	3837	192	0	12235	5	-142	80	23	0	-34	
11/30/2018	16.12%	53.00%	29.46%	1.44%	0.00%	100.00%	1964	6458	3589	175	0	12184	-16	232	-248	-17	0	-49	
12/31/2018	15.88%	51.21%	31.47%	1.44%	0.00%	100.00%	1930	6225	3826	175	0	12156	-34	-233	237	0	0	-30	
1/31/2019	15.87%	51.73%	30.98%	1.42%	0.00%	100.00%	1917	6250	3743	171	0	12081	-13	25	-83	-4	0	-75	
2/28/2019	15.51%	52.06%	31.09%	1.35%	0.00%	100.00%	1867	6268	3744	162	0	12041	-50	18	1	-9	0	-40	
3/31/2019	15.82%	52.03%	30.69%	1.45%	0.00%	100.00%	1906	6267	3697	175	0	12045	39	-1	-47	13	0	4	
4/30/2019	15.84%	52.64%	29.98%	1.54%	0.00%	100.00%	1902	6322	3601	185	0	12010	-4	55	-96	10	0	-35	
5/31/2019	15.58%	52.66%	30.28%	1.48%	0.00%	100.00%	1861	6289	3616	177	0	11943	-41	-33	15	-8	0	-67	
6/30/2019	16.27%	52.20%	30.08%	1.45%	0.00%	100.00%	1927	6184	3564	172	0	11847	66	-105	-52	-5	0	-96	
7/31/2019	16.41%	51.99%	30.05%	1.55%	0.00%	100.00%	1949	6174	3568	184	0	11875	22	-10	4	12	0	28	
8/31/2019	16.60%	51.92%	29.93%	1.55%	0.00%	100.00%	1945	6085	3507	182	0	11719	-4	-89	-61	-2	0	-156	
9/30/2019	16.49%	50.26%	31.63%	1.62%	0.00%	100.00%	1917	5843	3677	188	0	11625	-28	-242	170	6	0	-94	

Custody Level History by Month



History of Custody Levels and Trend Changes



#####