

Nevada Department of Corrections

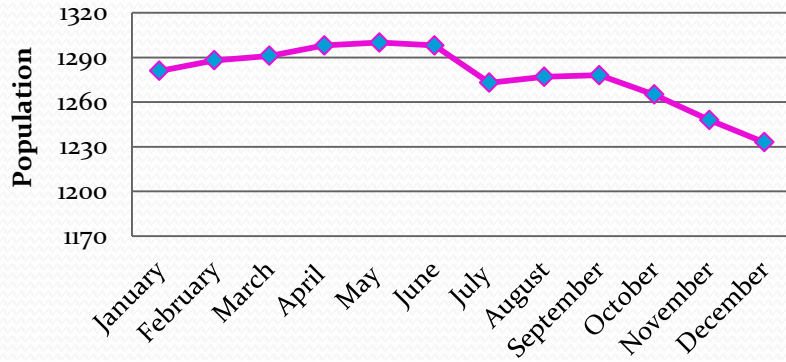
James Dzurenda, Director

February 15, 2018

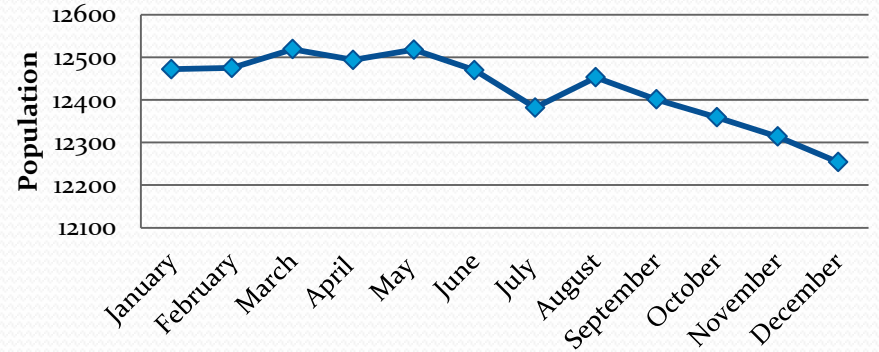


Population "In-House"

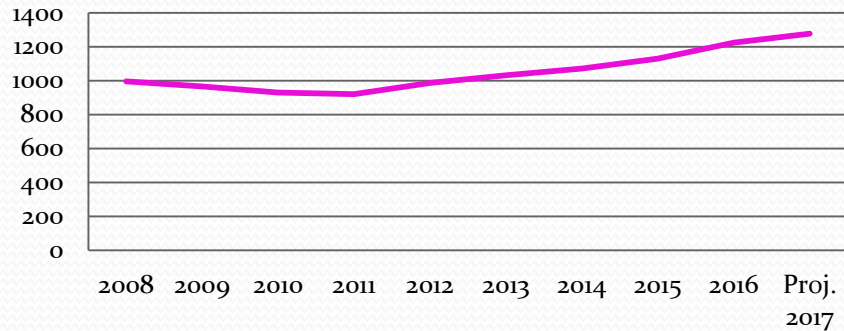
2017 Female Inmate Population Trend



2017 Male Inmate Population Trend

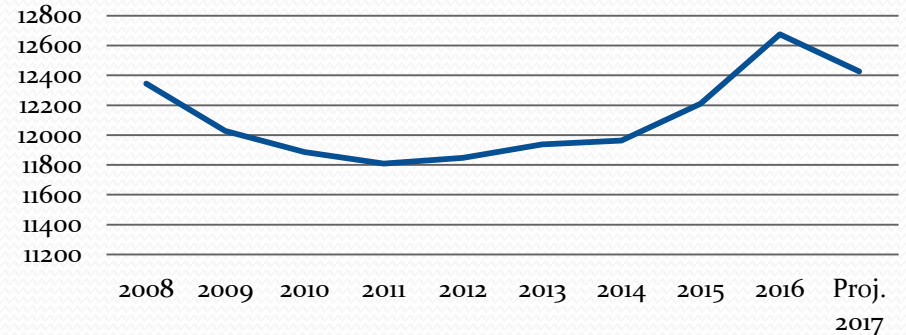


Female Inmate 10-Year Population Trend



— Female Inmate 10-Year Population Trend

Male Inmate 10-Year Population Trend

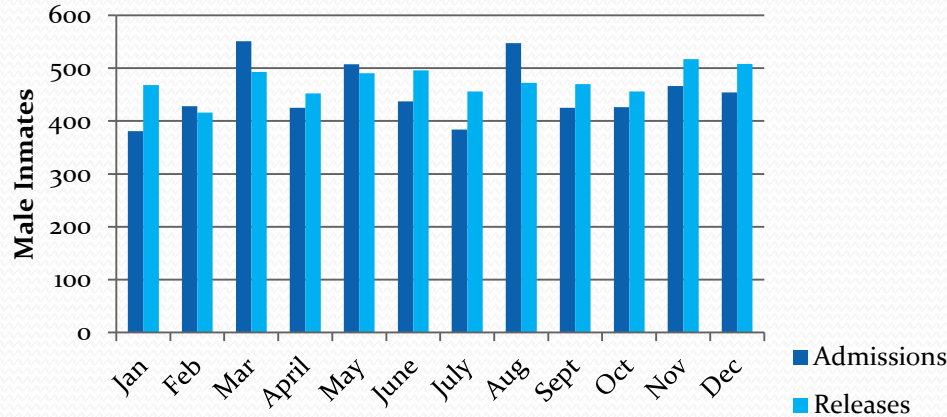


— Male Inmate 10-Year Population Trend

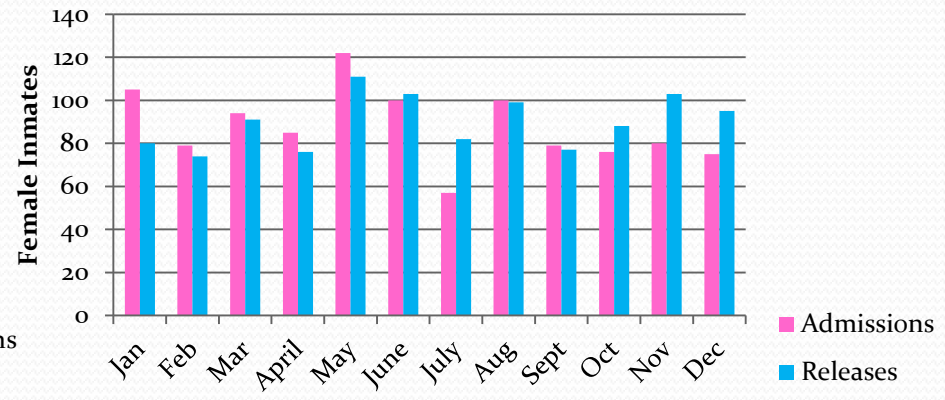
Note: 200 Inmates out of state 12/17

Admissions and Releases Trending

Male Admissions/Releases CY17



Female Admissions/Releases CY17



Total Admissions YTD: 6,483

Total Releases YTD: 6,773

Monthly Average:

Admissions: 540

Release: 564

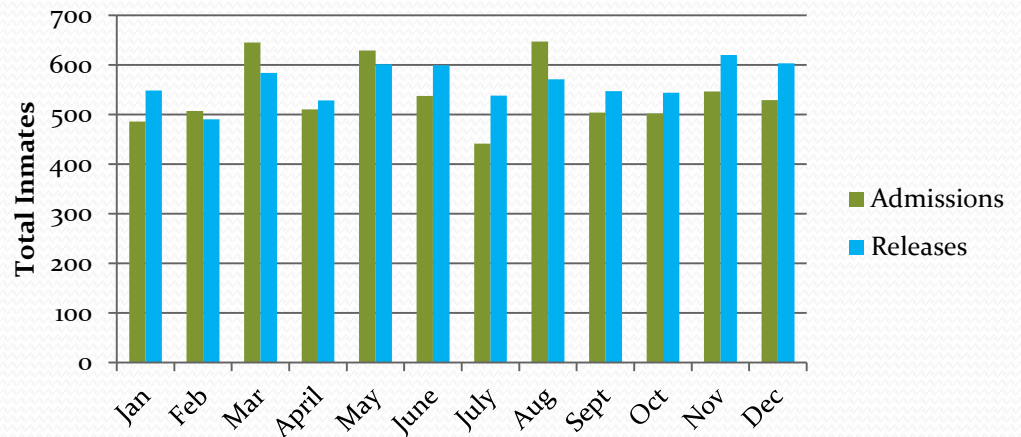
Male Admissions: 453

Male Releases: 475

Female Admissions: 88

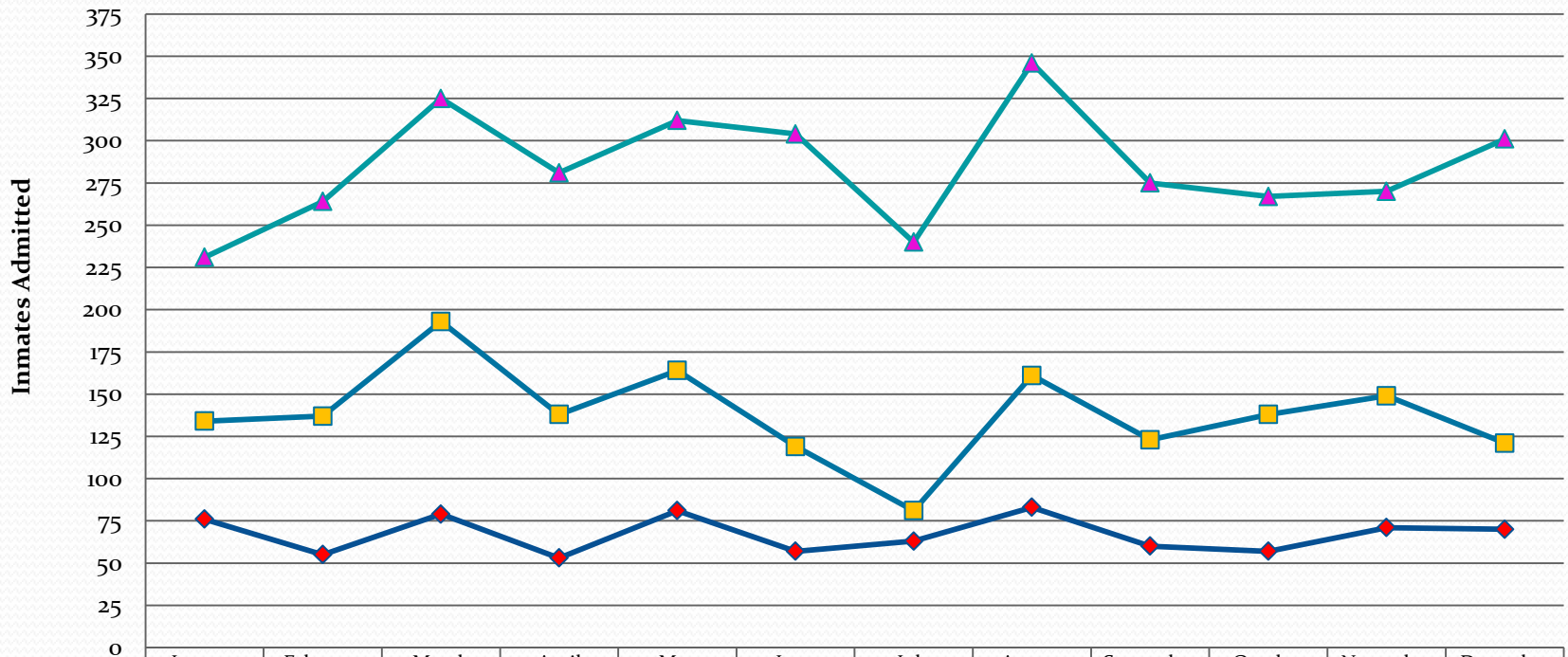
Female Releases: 90

Total Admissions/Releases CY 17



Admission Trends by Type

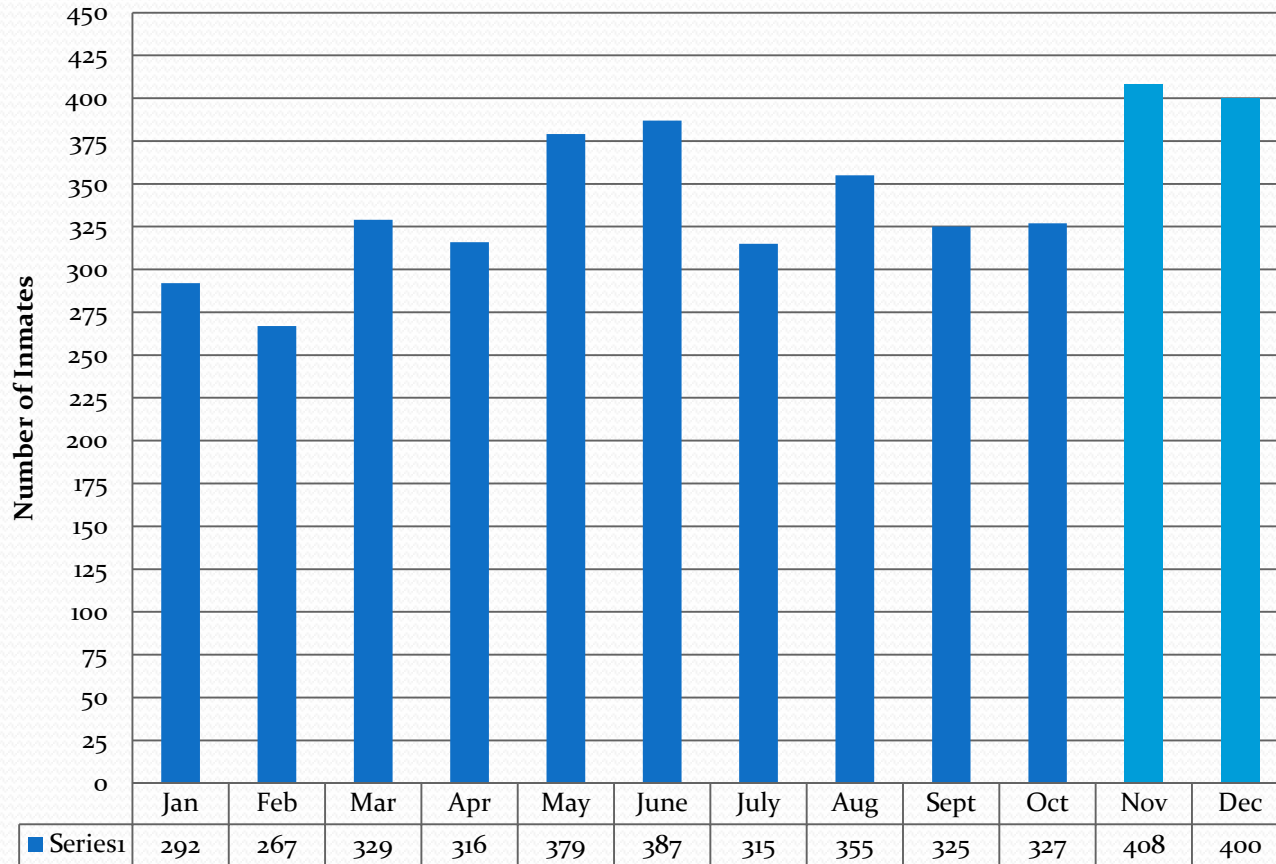
Admissions by New Commit, Probation Violator or Parole Violator



	January	February	March	April	May	June	July	August	September	October	November	December
Parole Violators	76	55	79	53	81	57	63	83	60	57	71	70
Probation Violators	134	137	193	138	164	119	81	161	123	138	149	121
New Commits	231	264	325	281	312	304	240	346	275	267	270	301

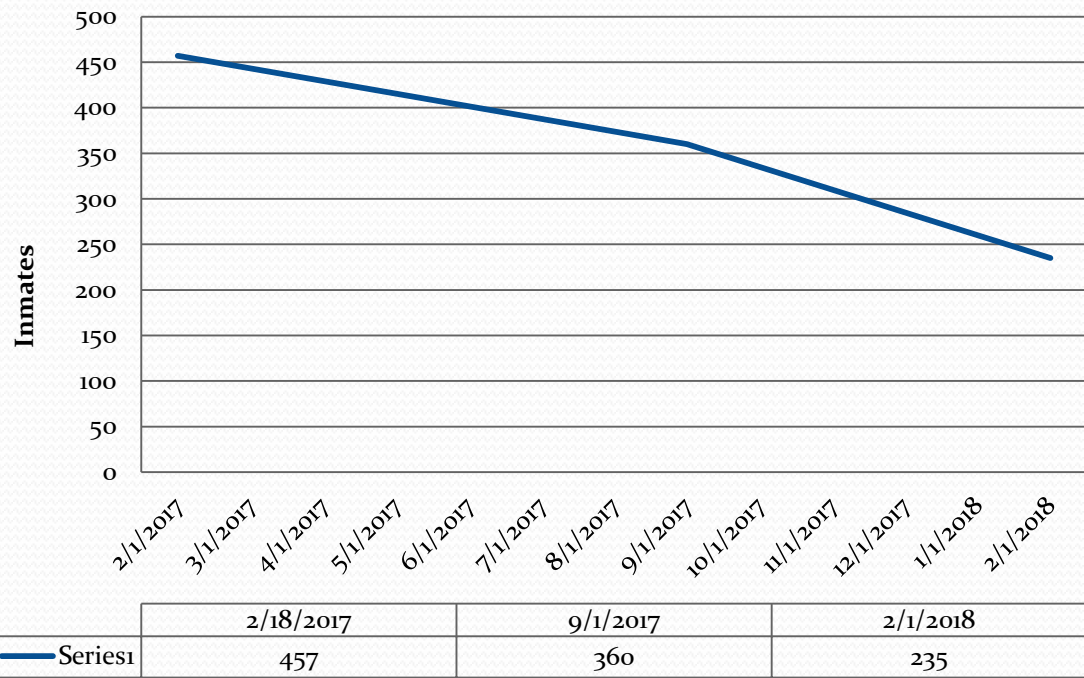
Does not include Safe Keepers or PARHU. Expectation is that parole violators will decrease with new centers and GPS home confinement for use by Department of Public Safety, Division of Parole and Probation.

Parole Board Granted Release



Expected to continue the trend towards a higher number of parole releases based on updated policies reflecting evidence-based programming

Impact of Embedded Specialists on Capacity



Overdue Inmates:

Inmates who have been granted parole, but are past their parole eligibility date.

February 2017:

NDOC started aggressive measures and identified additional housing in the community to expedite parole plans with P&P.

September 2017:

Worked with P&P to provide space for embedded specialists

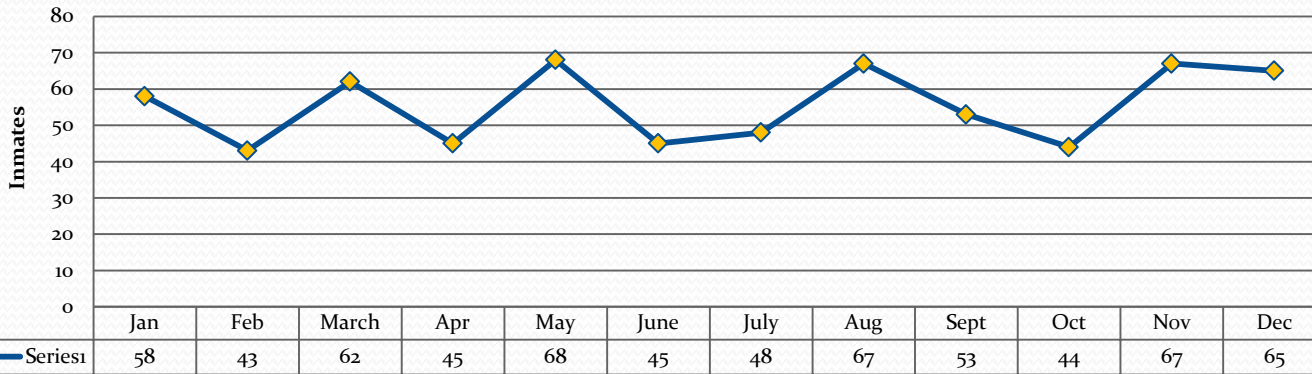
March 1, 2018:

P&P Specialists are embedded

Expecting to see a continued downward trend based on Parole and Probation estimates on reducing the overdue inmates.

Probation and Parole Violators No New Offense

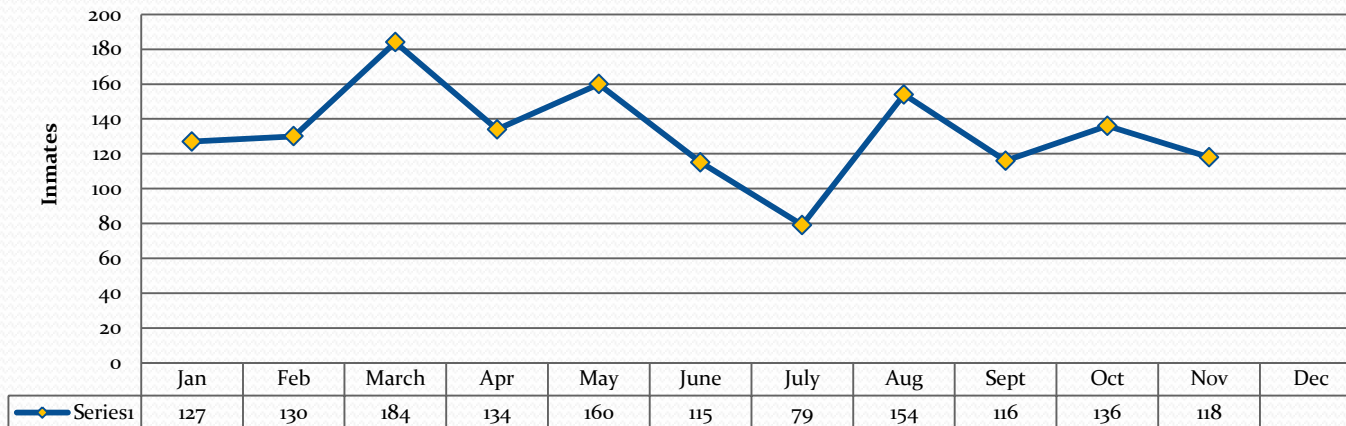
Parole Violators No New Offense 2017



Parole and Probation (P&P) recently opened the Day Reporting Center in Clark County and in Washoe County.

P&P provided projections that the Day Reporting Center would reduce technical violators and potential other parole or probation violations.

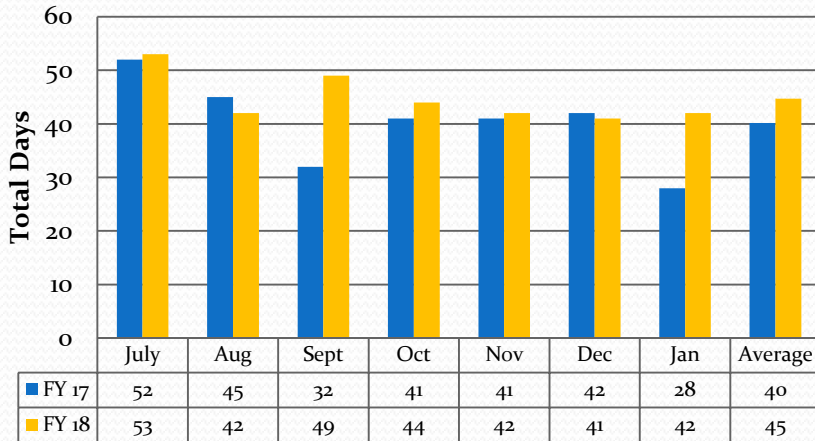
Probation Violators No New Offense 2017



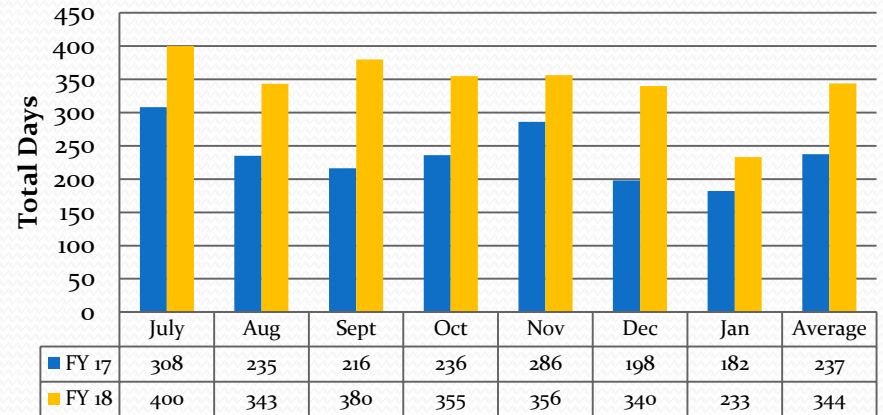
The Parole Board indicated they would approve the use of home monitoring as an added resource. NDOC anticipates that the Parole and Probation violators with no new offense should decrease with the operation of the new centers. Will trend 2017, with 2018.

Outside Medical Statistics

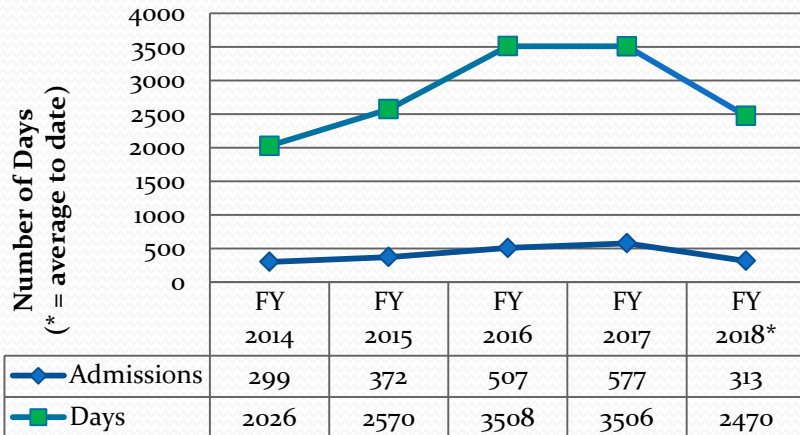
Admissions FY 17 VS FY 18



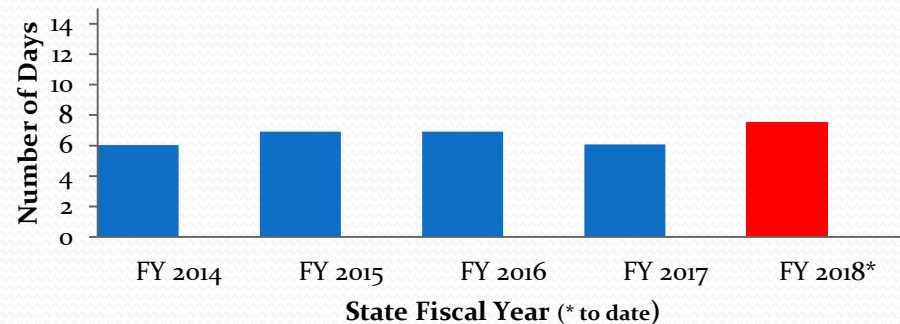
Inpatient Days FY 17 VS FY 18



Inmate Hospitalization

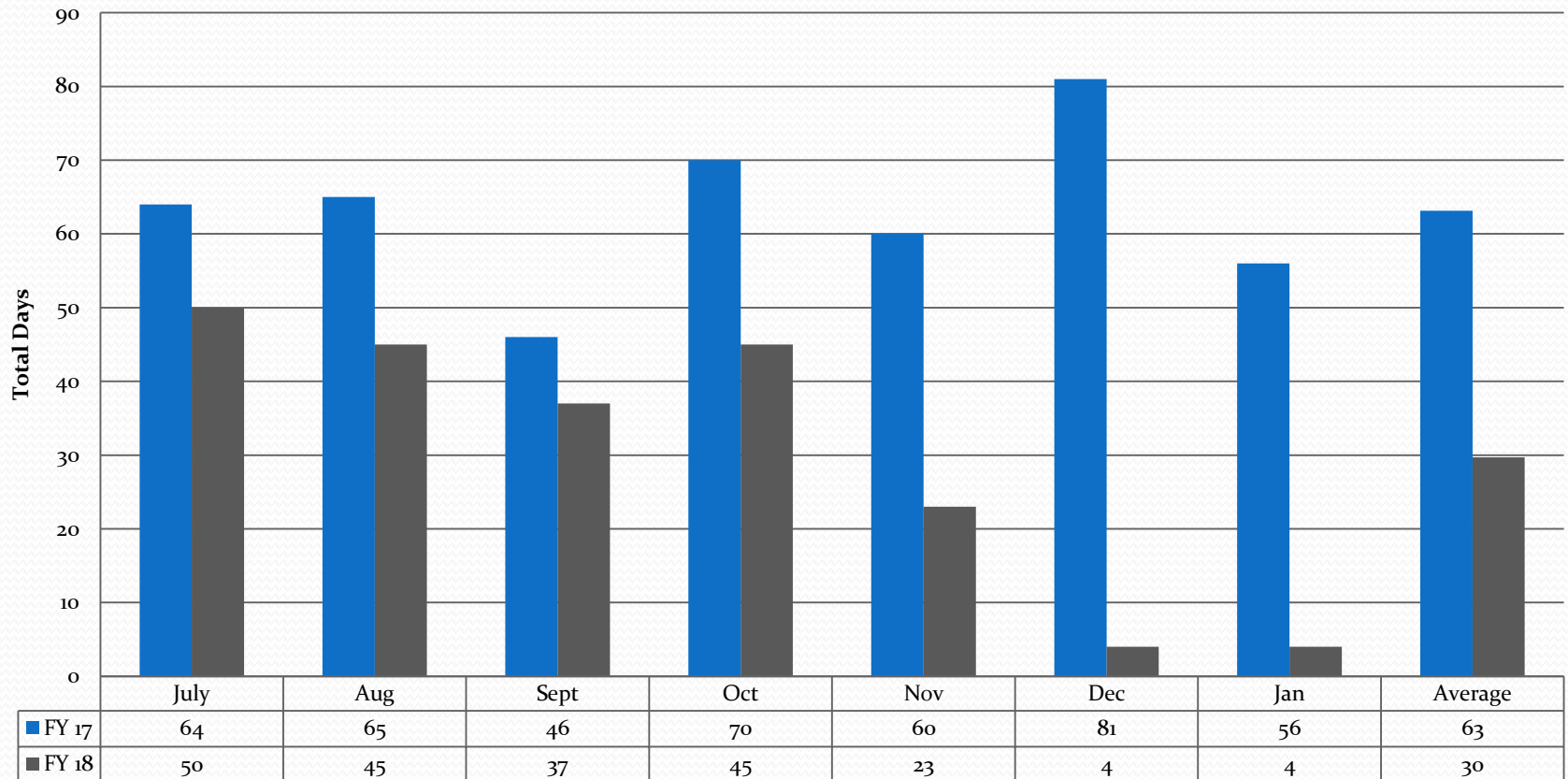


Hospitalization Length of State (LOS) Average



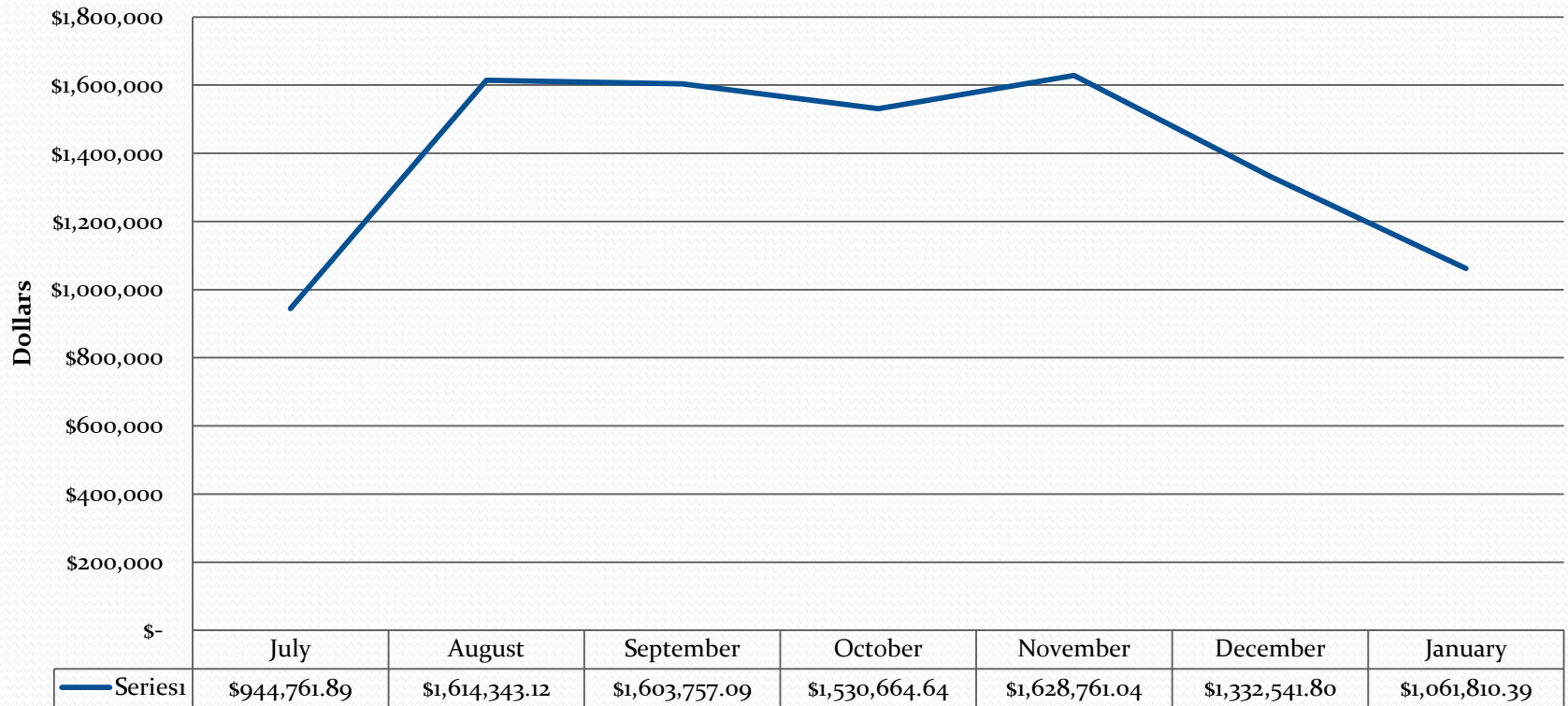
Emergency Room Visits

Emergency Room Visits
FY 17 VS FY 18



Monthly Overtime Trend

NDOC Overtime Trending SFY 18



Detailed report on overtime provided separately.