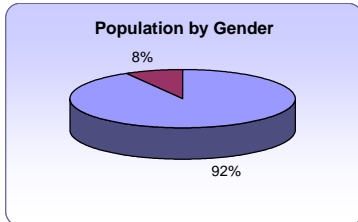




QUARTER I FISCAL YEAR 2013
STATISTICAL SUMMARY

OFFENDER DEMOGRAPHICS



TOTAL POPULATION	
AVERAGE AGE	
MALE	38.34
FEMALE	37.13

ETHNICITY AND GENDER

POPULATION	WHITE	AFRICAN AMERICAN	HISPANIC	ASIAN	AMERICAN INDIAN	CUBAN	UNKNOWN	TOTAL
MALE	5,231 43.82%	3,509 29.39%	2,568 21.51%	283 2.37%	209 1.75%	109 0.91%	29 0.24%	11,938 100.00%
FEMALE	675 63.14%	239 22.36%	97 9.07%	34 3.18%	24 2.25%	- 0.00%	- 0.00%	1,069 100.00%
TOTAL	5,906 45.41%	3,748 28.82%	2,665 20.49%	317 2.44%	233 1.79%	109 0.84%	29 0.22%	13,007 100.00%

AGE CATEGORIES AND GENDER

POPULATION	<25	25-34	35-44	45-54	55-64	65-75	>75	Total
MALE	1,708 14.31%	3,536 29.62%	2,888 24.19%	2,472 20.71%	997 8.35%	303 2.54%	34 0.28%	11,938 100.00%
FEMALE	147 13.75%	354 33.12%	290 27.13%	195 18.24%	66 6.17%	14 1.31%	3 0.28%	1,069 100.00%
TOTAL	1,855 14.26%	3,890 29.91%	3,178 24.43%	2,667 20.50%	1,063 8.17%	317 2.44%	37 0.28%	13,007 100.00%

OFFENSE GROUPS AND GENDER

POPULATION	DRUG	DUI	OTHER	PROPERTY	SEX	VIOLENCE	TOTAL
MALE	1,646 13.79%	315 2.64%	112 0.94%	1,406 11.78%	2,516 21.07%	5,943 49.78%	11,938 100.00%
FEMALE	246 23.01%	66 6.17%	26 2.43%	317 29.65%	36 3.37%	378 35.36%	1,069 100.00%
TOTAL	1,892 14.55%	381 2.93%	138 1.06%	1,723 13.25%	2,552 19.62%	6,321 48.60%	13,007 100.00%

Data Limitations:

Data published in this report were extracted from a live database; thus, it is possible that figures reported in tables and chart do not balance to totals reported in other reports published by the Department of Corrections. Select distributions consist of estimates and are susceptible to rounding error and missing data which could have caused these distributions not to add up to exactly 100%. Current fiscal year data for the NDOC or for other agencies are not always available at time of edition; consequently, the NDOC performed its best effort to align data accordingly to derive estimates.

DISTRIBUTION OF IN-HOUSE OFFENDERS BY ETHNICITY AND CORRECTIONAL SITE

Location	Gender	White	%	African American	%	Hispanic	%	Asian	%	American Indian	%	Cuban	%	Other	%	TOTAL
CCC	M	54	0.44	35	0.29	27	0.22	4	0.03	3	0.02	0	0.00	0	0.00	123
CGTH	F	38	0.86	4	0.09	1	0.02	1	0.02	0	0.00	0	0.00	0	0.00	44
CGTH	M	122	0.58	54	0.26	26	0.12	6	0.03	4	0.02	0	0.00	0	0.00	212
ECC	M	51	0.43	50	0.42	15	0.13	1	0.01	0	0.00	0	0.00	1	0.01	118
ESP	M	393	0.39	319	0.31	249	0.24	23	0.02	19	0.02	12	0.01	3	0.00	1,018
HCC	M	62	0.51	38	0.31	15	0.12	2	0.02	2	0.02	1	0.01	1	0.01	121
HDSP	M	1,160	0.36	1,179	0.36	769	0.24	88	0.03	29	0.01	38	0.01	4	0.00	3,267
TLVCC	M	111	0.45	80	0.32	38	0.15	9	0.04	4	0.02	6	0.02	0	0.00	248
JCC	F	137	0.67	42	0.20	14	0.07	6	0.03	6	0.03	0	0.00	0	0.00	205
LCC	M	871	0.53	208	0.13	474	0.29	36	0.02	33	0.02	3	0.00	11	0.01	1,636
NNCC	F	3	0.75	0	0.00	1	0.25	0	0.00	0	0.00	0	0.00	0	0.00	4
NNCC	M	925	0.63	292	0.20	192	0.13	19	0.01	35	0.02	13	0.01	1	0.00	1,477
NNRC	M	67	0.71	10	0.11	4	0.04	6	0.06	7	0.07	0	0.00	0	0.00	94
NSP	M	0	0.00	0	0.00	0	0.00	0	0.00	0	0.00	0	0.00	0	0.00	0
PCC	M	65	0.42	58	0.37	25	0.16	5	0.03	1	0.01	1	0.01	1	0.01	156
SCC	M	204	0.60	64	0.19	48	0.14	4	0.01	17	0.05	0	0.00	4	0.01	341
SDCC	M	636	0.31	840	0.41	459	0.22	55	0.03	25	0.01	33	0.02	1	0.00	2,049
FMWCC	F	472	0.61	184	0.24	78	0.10	25	0.03	17	0.02	0	0.00	0	0.00	776
TCC	M	57	0.45	37	0.29	27	0.21	2	0.02	5	0.04	0	0.00	0	0.00	128
WCC	M	55	0.46	35	0.30	24	0.20	3	0.02	1	0.01	1	0.01	0	0.00	119
WSCC	M	294	0.54	109	0.20	102	0.19	12	0.02	20	0.04	3	0.01	1	0.00	541
Sub-Total	M	5,127	44.0%	3,408	29.3%	2,494	21.4%	275	2.4%	205	1.8%	111	1.0%	28	0.2%	11,648
Sub-Total	F	650	63.2%	230	22.4%	94	9.1%	32	3.1%	23	2.2%	0	0.0%	0	0.0%	1,029
Total		5,777	45.6%	3,638	28.7%	2,588	20.4%	307	2.42%	228	1.80%	111	0.88%	28	0.22%	12,677

IN-HOUSE POPULATION BY CUSTODY^{a b}
EXCLUSIVE OF SAFEKEEPERS

ACTUAL VS CALCULATED CUSTODY				
FEMALES				
CALCULATED				
ACTUAL	MIN	MED	CLOS	TOTAL
MIN	215	35	0	250
MED	171	286	41	498
CLOSE	66	119	80	265
TOTAL	452	440	121	1013

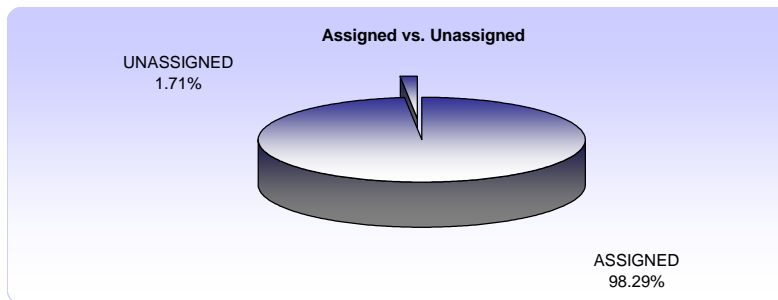
MALES				
CALCULATED				
ACTUAL	MIN	MED	CLOS	TOTAL
MIN	1,362	269	3	1,634
MED	1,650	4,437	700	6,787
CLOSE	532	1,272	1,277	3,081
TOTAL	3,544	5,978	1,980	11,502

DISTRIBUTION OF CUSTODIES				
FEMALES				
CALCULATED				
ACTUAL	MIN	MED	CLOS	TOTAL
MIN	21.22%	3.46%	0.00%	24.68%
MED	16.88%	28.23%	4.05%	49.16%
CLOSE	6.52%	11.75%	7.90%	26.16%
TOTAL	44.62%	43.44%	11.94%	100.00%

MALES				
CALCULATED				
ACTUAL	MIN	MED	CLOS	TOTAL
MIN	11.84%	2.34%	0.03%	14.21%
MED	14.35%	38.58%	6.09%	59.01%
CLOSE	4.63%	11.06%	11.10%	26.79%
TOTAL	30.81%	51.97%	17.21%	100.00%

ASSIGNED VS. UNASSIGNED CUSTODY

GENDER	ASSIGNED	UNASSIGNED	TOTAL
FEMALE	968 95.56%	45 4.44%	1013 100.00%
MALE	11,333 98.53%	169 1.47%	11,502 100.00%
TOTAL	12,301 98.29%	214 1.71%	12,515 100.00%



^a Beginning March 2007, minimum custody is comprised of community assignment and minimum custodies, and close custody comprises unassigned, close, and maximum custodies. The former method excluded inmates that had not been assigned to a custody on the query run date.

^b The in-house populations by gender don't balance to the actual in-house populations reported in Report 1.1 dated as the last day of the month given that SKI, SKC, and SKF inmates are excluded from the distribution.

**HISTORICAL CUSTODY QUARTERLY ANALYSIS
INCLUSIVE OF SAFEKEEPERS
FISCAL YEAR BASIS**

Month/Year	MALE CUSTODY DISTRIBUTION				FEMALE CUSTODY DISTRIBUTION			
	MIN	MED	CLOSE	TOTAL	MIN	MED	CLOSE	TOTAL
06/09	13.80%	59.58%	26.62%	100.00%	21.67%	60.73%	17.60%	100.00%
09/09	12.70%	59.42%	27.88%	100.00%	21.86%	56.90%	21.23%	100.00%
12/09	12.70%	59.86%	27.44%	100.00%	21.06%	57.04%	21.90%	100.00%
03/10	11.03%	57.96%	31.01%	100.00%	19.05%	56.49%	24.46%	100.00%
06/10	12.95%	58.07%	28.98%	100.00%	17.38%	70.58%	12.05%	100.00%
09/10	13.16%	58.27%	28.57%	100.00%	17.30%	69.64%	13.06%	100.00%
12/10	13.88%	58.38%	27.73%	100.00%	16.29%	70.61%	13.10%	100.00%
03/11	14.10%	57.36%	28.54%	100.00%	19.72%	63.16%	17.12%	100.00%
06/11	14.41%	57.27%	28.32%	100.00%	21.57%	65.93%	12.50%	100.00%
09/11	14.79%	57.90%	27.31%	100.00%	24.29%	60.89%	14.81%	100.00%
12/11	15.29%	57.94%	26.77%	100.00%	22.27%	67.02%	10.71%	100.00%
03/12	15.39%	57.85%	26.75%	100.00%	21.56%	53.81%	24.63%	100.00%
06/12	14.91%	57.47%	27.62%	100.00%	21.64%	51.59%	26.77%	100.00%
09/12	15.06%	57.12%	27.83%	100.01%	26.38%	47.24%	26.38%	100.00%

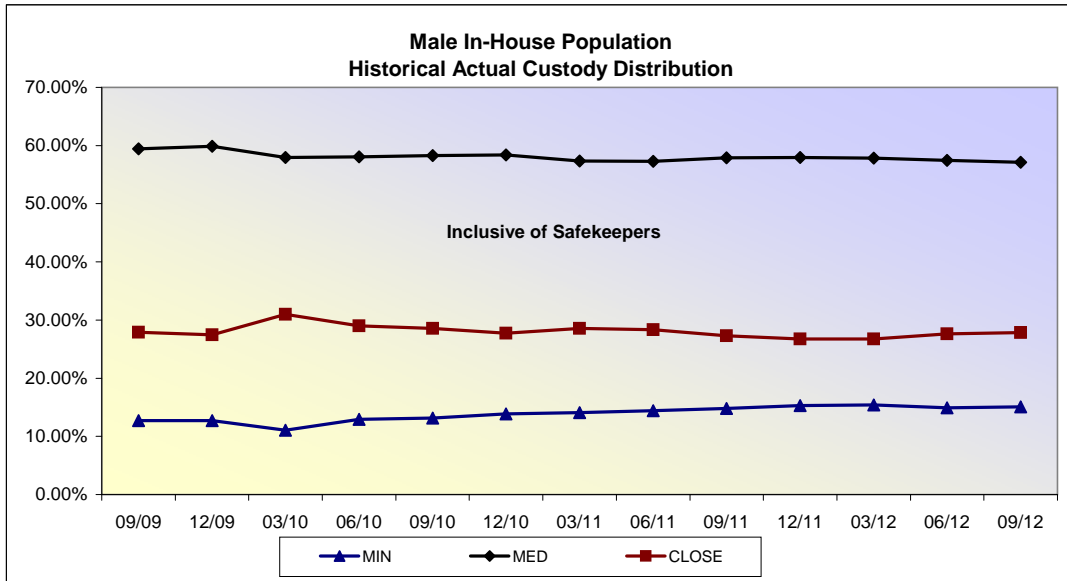
Fiscal Year 2010 Quarterly Average						
Measurement	Male			Female		
	Minimum	Medium	Close	Minimum	Medium	Close
Mean	12.35%	58.83%	28.83%	19.84%	60.25%	19.91%
Median	12.70%	58.75%	28.43%	20.05%	56.97%	21.57%
Standard Deviation	0.88%	0.96%	1.59%	2.02%	6.89%	5.42%
Range	2.80%	1.90%	4.39%	7.64%	16.90%	12.40%

Fiscal Year 2011 Quarterly Average						
Measurement	Male			Female		
	Minimum	Medium	Close	Minimum	Medium	Close
Mean	13.89%	57.82%	28.29%	18.72%	67.33%	13.94%
Median	13.99%	57.82%	28.43%	18.51%	67.79%	13.08%
Standard Deviation	0.53%	0.59%	0.39%	2.38%	3.44%	2.13%
Range	1.25%	1.11%	0.84%	5.28%	7.45%	4.62%

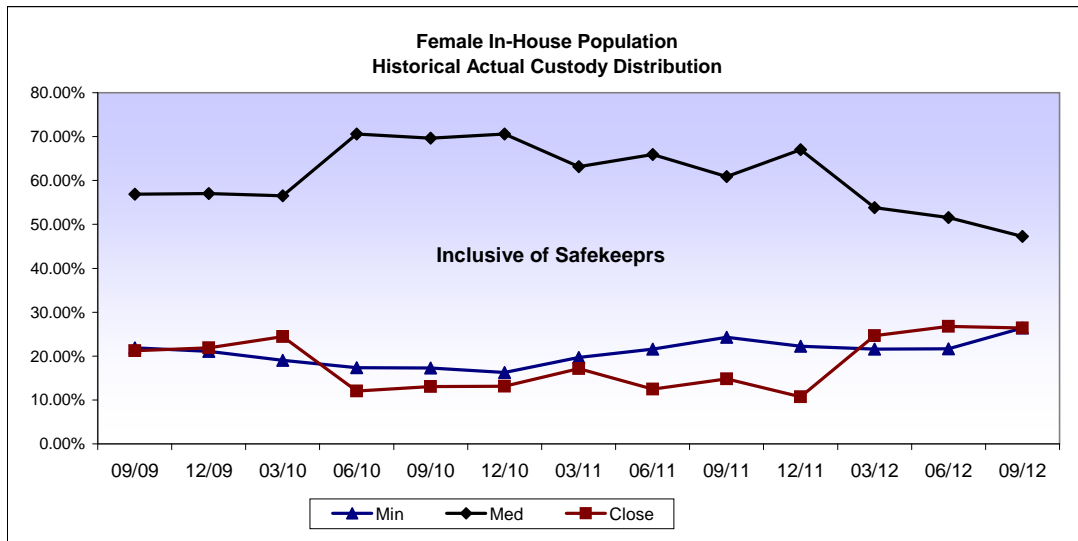
Fiscal Year 2012 To-Date Quarterly Average						
Measurement	Male			Female		
	Minimum	Medium	Close	Minimum	Medium	Close
Mean	15.09%	57.79%	27.11%	22.44%	58.33%	19.23%
Median						
Standard Deviation	0.29%	0.22%	0.43%	1.27%	7.02%	7.70%
Range	0.61%	0.04%	0.85%	2.02%	6.13%	16.06%

Fiscal Year 2013 To-Date Quarterly Average						
Measurement	Male			Female		
	Minimum	Medium	Close	Minimum	Medium	Close
Mean	15.06%	57.12%	27.83%	100.01%	26.38%	47.24%
Median						
Standard Deviation						
Range						

**Custody Distributions
2011 - 2012 Biennium**



Male Population: during the first quarter of Fiscal Year 2013, minimum custody increased by 1%, medium decreased by .61%, and close custody increased by .76%.

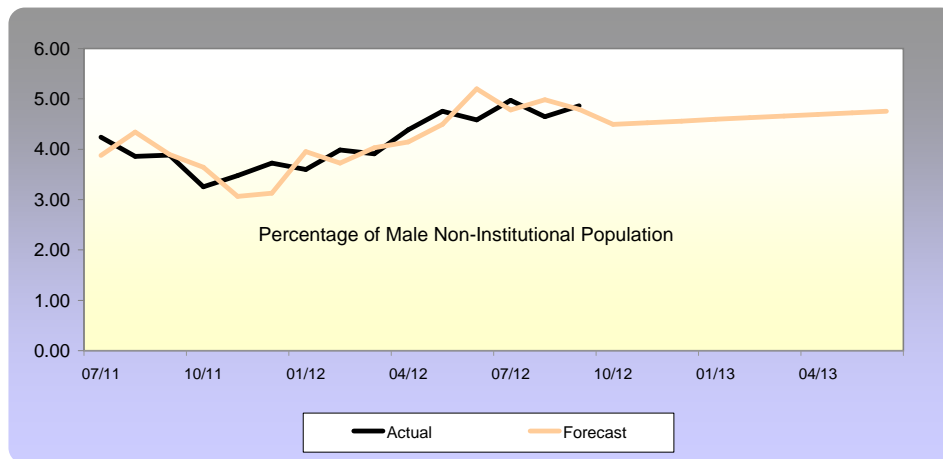
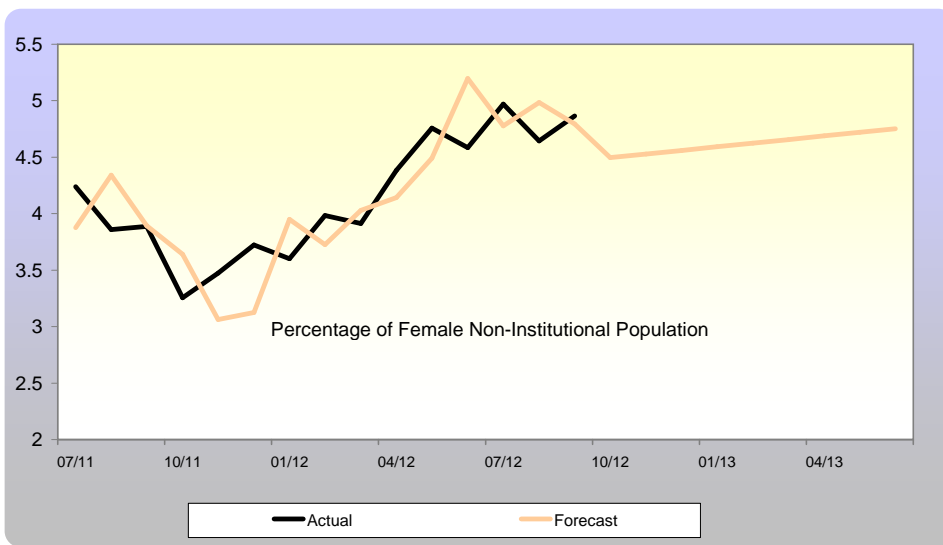


Female Population: during the first quarter of 2013, minimum custody increased by 21.90%, medium decreased by 8.43%, and close custody decreased by 1.46%.

Proportion of Non-Institutional Population

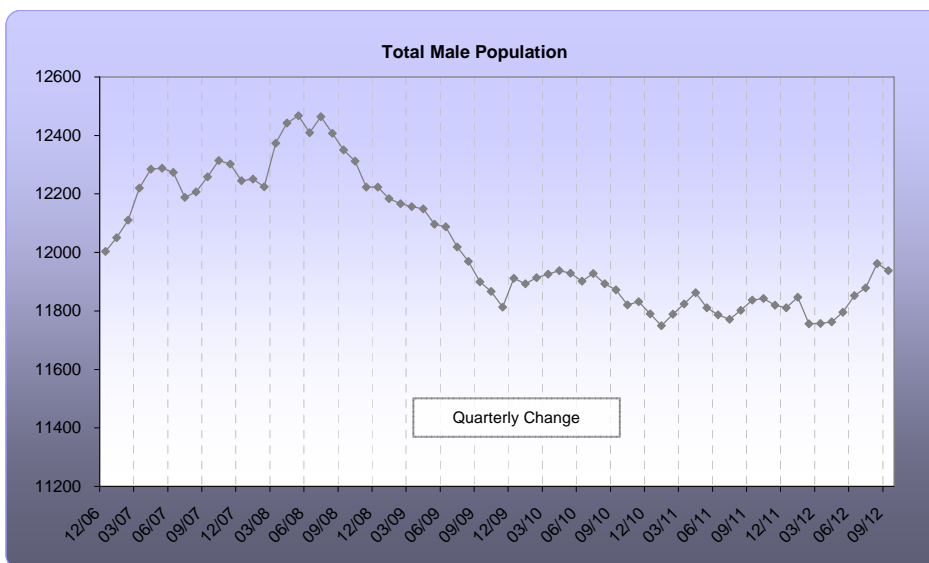
FY 2012	Female Population	
	Actual	Forecast
07/12	4.59	4.78
08/12	4.97	4.99
09/12	4.86	4.79
10/12		
11/12		
12/12		
01/13		
02/13		
03/13		
04/13		
05/13		
06/13		
Average	4.81	4.85

FY 2013	Male Population	
	Actual	Forecast
07/12	2.29	2.319
08/12	2.26	2.326
09/12	2.30	2.32
10/12		2.382
11/12		2.399
12/12		2.416
01/13		2.434
02/13		2.451
03/13		2.468
04/13		2.49
05/13		2.50
06/13		2.52
Average	2.28	2.42

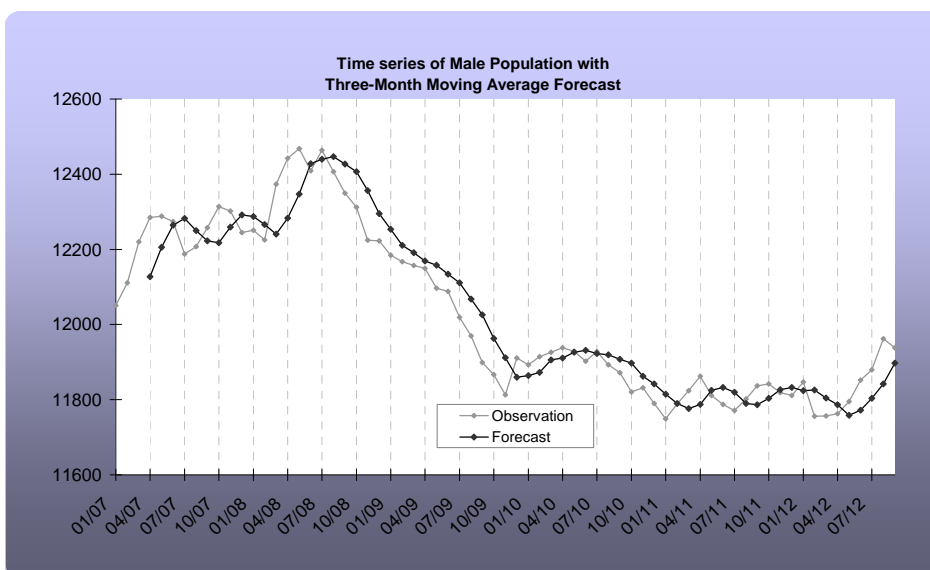


Note: The non-institutional population represents offenders not housed at an NDOC location, such as those on escape, on residential confinement, or serving a sentence out of state.

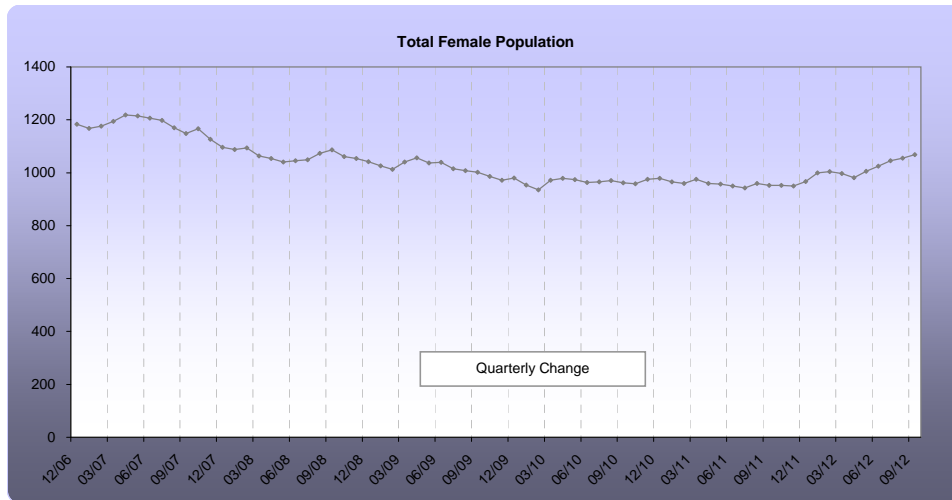
Quarterly Analysis Male Population



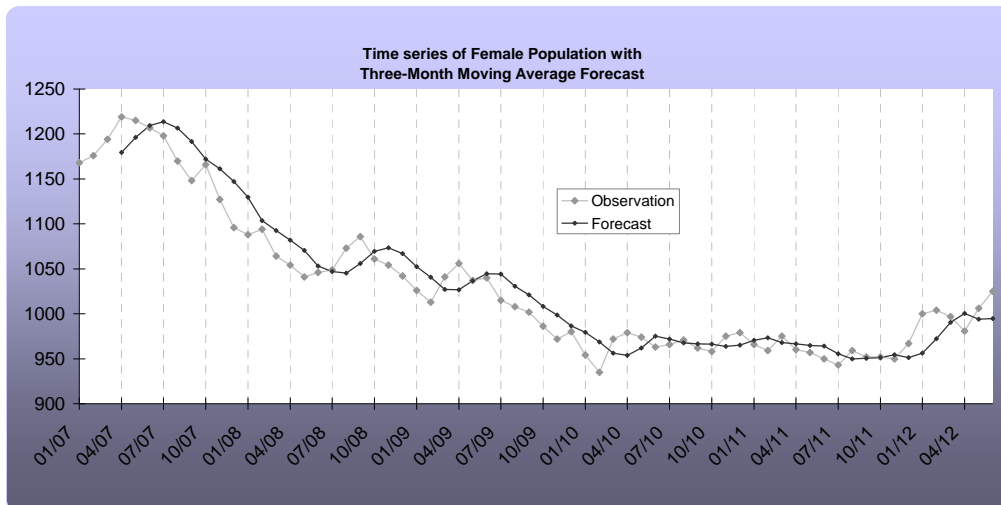
Year	2011				2012				2013	
Quarter	Q1	Q2	Q3	Q4	Q1	Q2	Q3	Q4	Q1	Q2
Change	-30	-82	34	-37	50	-26	-54	89	86	
% Change	-0.25%	-0.69%	0.29%	-0.31%	0.42%	-0.22%	-0.46%	0.76%	0.73%	



Quarterly Analysis
Female Population

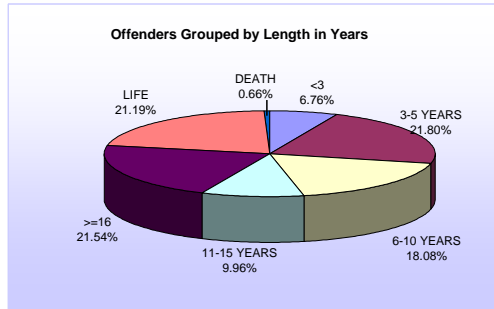


Year	2011				2012				2013	
Quarter	Q1	Q2	Q3	Q4	Q1	Q2	Q3	Q4	Q1	Q2
Change	-1	17	-4	-25	2	15	30	28	44	
% Change	-0.10%	1.77%	-0.41%	-2.56%	0.21%	1.58%	3.10%	2.81%	4.29%	



LONG-TERM SENTENCE STRUCTURES

SENTENCE LENGTH	TOTAL	%
1 YEAR	118	0.91%
1-2 YEARS	709	5.45%
3-5 YEARS	2,871	22.07%
6-10 YEARS	2,334	17.94%
11-15 YEARS	1,348	10.36%
16-20 YEARS	1,152	8.86%
>=21 YEARS	1,629	12.52%
LIFE W/PAROLE	2,236	17.19%
LIFE W/O PAROLE	526	4.04%
DEATH	84	0.65%
TOTAL	13,007	100.00%



FELONY ANALYSIS

TOTAL POPULATION BY FELONY CAT	A	B	C	D	E	UNKNOWN	Total
MALE	3,362	7,498	701	283	82	12	11,938
	28.16%	62.81%	5.87%	2.37%	0.69%	0.10%	100.00%
FEMALE	127	707	123	74	35	3	1069
	11.88%	66.14%	11.51%	6.92%	3.27%	0.28%	100.00%
TOTAL	3,489	8,205	824	357	117	15	13,007
	26.82%	63.08%	6.34%	2.74%	0.90%	0.12%	100.00%

PAROLES AND OFFENSE

PAROLE POPULATION	SEX	VIOL	DRUG	PROP	DUI	OTHER	TOTAL
MALE	431	836	640	831	132	136	3,006
	14.34%	27.81%	21.29%	27.64%	4.39%	4.52%	100.00%
FEMALE	5	88	112	216	23	28	472
	1.06%	18.64%	23.73%	45.76%	4.87%	5.93%	100.00%
TOTAL	436	924	752	1,047	155	164	3,478
	12.54%	26.57%	21.62%	30.10%	4.46%	4.72%	100.00%

^a Source: Nevada Department of Public Safety, Division of Parole and Probation, as of October 1st, 2012.

WALKAWAYS AND ESCAPES DURING FISCAL YEAR 2013

NUMBER OF ESCAPEES													
LOCATION	JUL	AUG	SEP	OCT	NOV	DEC	JAN	FEB	MAR	APR	MAY	JUN	TOTAL
NSP													0
HDSP													0
NNCC													0
WSCC													0
SNCC													0
SDCC													0
ESP													0
LCC													0
FMWCC													0
Total Escaped	0	0	0	0	0	0	0	0	0	0	0	0	0
Total Captured													0
Escape Balance	0	0	0	0	0	0	0	0	0	0	0	0	0

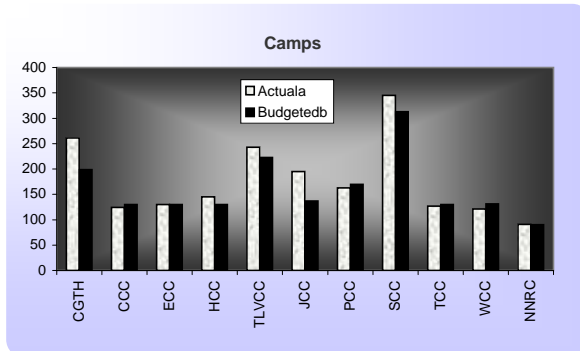
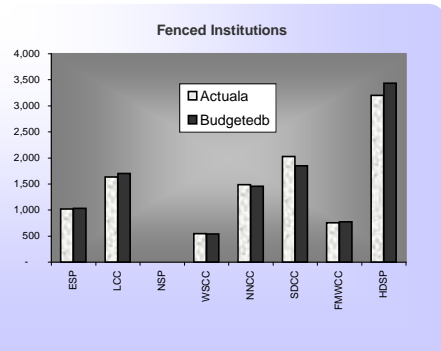
NUMBER OF WALKAWAYS													
LOCATION	JUL	AUG	SEP	OCT	NOV	DEC	JAN	FEB	MAR	APR	MAY	JUN	TOTAL
NNRC	0	0	0	0	0	0	0	0	0	0	0	0	0
Walked													0
Captured													0
CGTH	3	0	-1	0	0	0	0	0	0	0	0	0	2
Walked	3												8
Captured		3	3										6
SCC	0	0	0	0	0	0	0	0	0	0	0	0	0
Walked													0
Captured													0
PCC	0	0	0	0	0	0	0	0	0	0	0	0	0
Walked													0
Captured													0
TLVCC	0	0	0	0	0	0	0	0	0	0	0	0	0
Walked													0
Captured													0
ECC	0	0	0	0	0	0	0	0	0	0	0	0	0
Walked													0
Captured													0
JCC	0	0	0	0	0	0	0	0	0	0	0	0	0
Walked													0
Captured													0
PCC	0	0	0	0	0	0	0	0	0	0	0	0	0
Walked													0
Captured													0
CCC	0	0	0	0	0	0	0	0	0	0	0	0	0
Walked													0
Captured													0
SSCC													0
Walked													0
Captured													0
TCC	0	0	0	0	0	0	0	0	0	0	0	0	0
Walked													0
Captured													0
HCC	0	0	0	0	0	0	0	0	0	0	0	0	0
Walked													0
Captured													0
TRANS	0	0	0	0	0	0	0	0	0	0	0	0	0
Walked													0
Captured													0
JAIL	0	0	0	0	0	0	0	0	0	0	0	0	0
Walked													0
Captured													0
HOSP	0	0	0	0	0	0	0	0	0	0	0	0	0
Walked													0
Captured													0
RES CON	0	0	0	0	0	0	0	0	0	0	0	0	0
Walked													0
Captured													0
OSC	0	0	0	0	0	0	0	0	0	0	0	0	0
Walked													0
Captured													0
Total Walked	3	3	2	0	0	0	0	0	0	0	0	0	8
Total Captured	0	3	3	0	0	0	0	0	0	0	0	0	6
Walkaway Balance	3	0	-1	0	0	0	0	0	0	0	0	0	2

Escape to Population Statistics for Fiscal Year 2013

Month	Population	Escapes	Walkaways	Total	Rate per 10,000 Inmates
July	12,877	0	3	3	2.3
August	12,925	0	3	3	2.3
September	13,007	0	3	3	2.3
October					
November					
December					
January					
February					
March					
April					
May					
June					
Average	12,936	0	3	3	2.32

Quarterly Population Averages

Fenced Institutions	Abbreviation	Actual ^a	Budgeted ^b	% Actual to Budgeted
Ely State Prison	ESP	1,019	1,033	98.64%
Lovelock Correctional Center	LCC	1,637	1,703	96.12%
Nevada State Prison	NSP			
Warm Spring Correctional Center	WSCC	544	540	100.74%
Northern Nevada Correctional Center	NNCC	1,486	1,459	101.85%
Southern Desert Correctional Center	SDCC	2,028	1,847	109.80%
Florence McClure Correctional Center	FMWCC	757	776	97.55%
High Dessert State Prison	HDSP	3,200	3,434	93.19%
Total		10,671	10,792	98.88%



Facilities	Abbreviation	Actual ^a	Budgeted ^b	% Actual to Budgeted
Casa Grande Traditional Center	CGTH	261	199	131.16%
Carlin Correctional Center	CCC	124	130	95.38%
Ely Correctional Center	ECC	130	130	100.00%
Humboldt Correctional Center	HCC	145	130	111.54%
Three Lakes Valle Correctional Center	TLVCC	243	223	108.97%
Jean Correctional Center	JCC	195	137	142.34%
Pioche Correctional Center	PCC	163	170	95.88%
Stewart Correctional Center	SCC	345	313	110.22%
Tonopah Correctional Center	TCC	127	130	97.69%
Wells Correctional Center	WCC	121	131	92.37%
Northern Nevada Restitution Center	NNRC	91	90	101.11%
Total		1,945	1,783	109.09%

^a Reflects actual average population during the reporting quarter.
^b Reflects the budgeted monthly population for the current fiscal year.

CORRECTIONAL SYSTEMS COMPARISON

Personnel Statistics

NV-Employee Type	Authorized FETs	Filled
Security	1,802.00	1,728.00
Non-security	950.19	850.00
Total	2,752.19	2,578.00

Bed Capacity

Density	AZ ^a	CA ^b	NV ^c
Base Structure	N/A	84,130	10,640
Operating Capacity	41,967	N/A	11,432
Emergency Threshold	N/A	N/A	12,838
Emergency and Above	43,520	125,282	13,624
In-House Population	39,400	124,336	12,564

Population Changes During the Quarter

Quarterly Percentage Change	AZ ^a	CA ^b	NV ^{c d}
Correctional Population	0.02%	4.24%	0.96%
Parole Population	1.17%	-5.55%	-12.63%

Cost of Incarceration

Costs of Incarceration	AZ ^a	CA ^e	NV
Yearly Operating Cost per Inm	\$26,939	\$49,336	\$20,172.00
% of General Fund	8.00%	7.20%	9.20%
Incarceration Rate ^f	539.62	429.80	472.28

Sources:

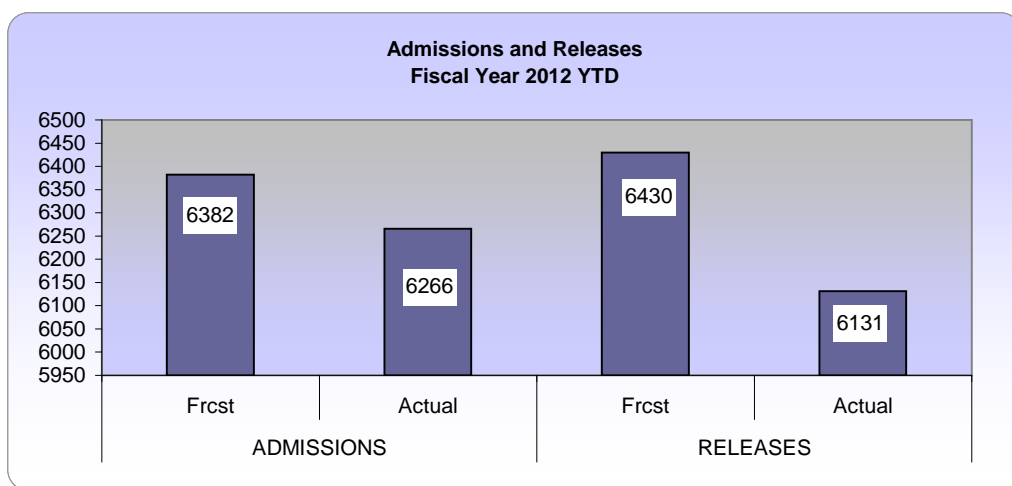
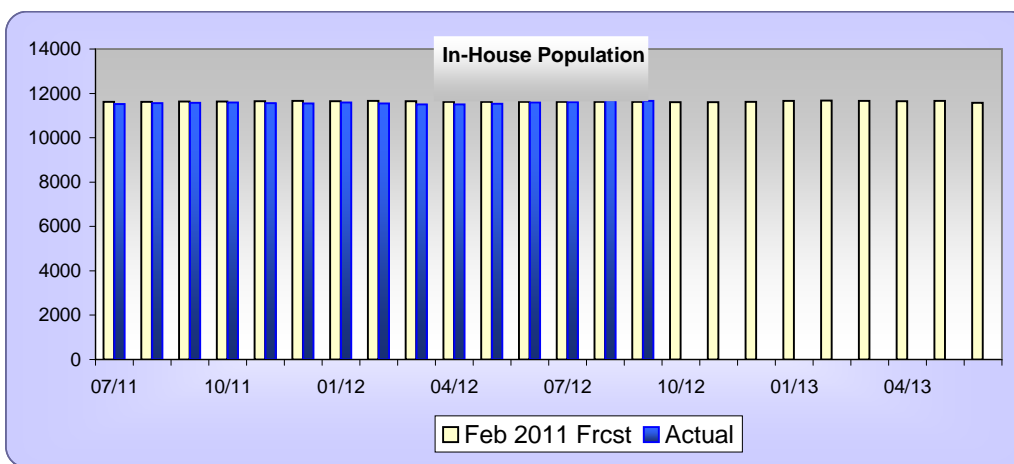
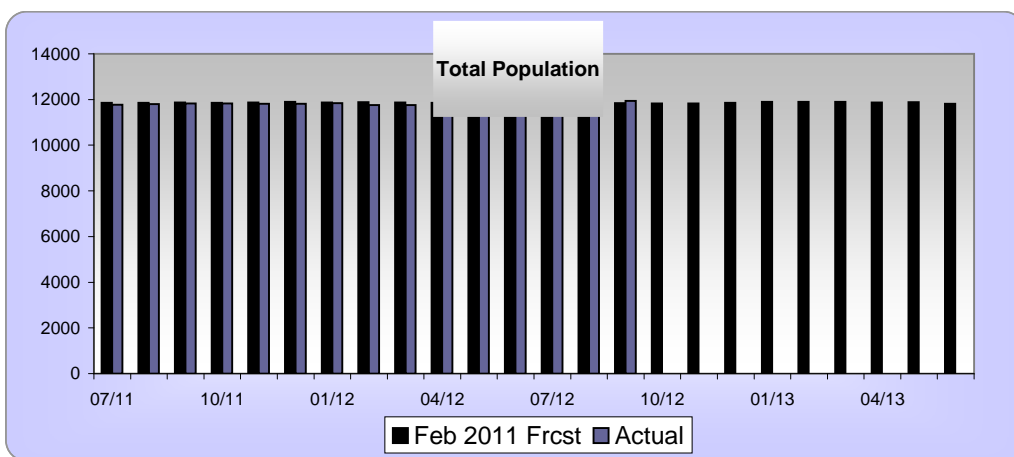
- ^a Arizona Department of Corrections Institutional Capacity Committed Population and Proposed Budget for Fiscal Year 2011-2012.
- ^b California Department of Corrections, Monthly Report of Populations.
- ^c Nevada Department of Corrections, Offender Daily Count Sheet, Capacity Report, and Legislatively Approved Cost per Inmate for Fiscal Year 2011-2012.
- ^d Nevada Department of Public Safety and Division of Parole and Probation.
- ^e California Department of Finance.
- ^f Rates derived by the NDOC with data from correctional agencies and the U.S. Census Bureau Population Estimates, State Totals, Vintage 2011.

Monthly Population Statistics

Month Year	Projected vs. Actual Male Population																
	TOTAL ^a						IN-HOUSE ^b					ADMISSIONS ^c			RELEASES ^d		
	Frcst ^e	Actual ^f	Intermediate Sanction	Act-Frcst	SqrdErrors	Actual ^f	Actual Felon	Intermediate Sanction	Actual-Frcst	SqrdErrors	Frcst ^e	Actual ^f	Intermedi-ate Sanction	Frcst ^e	Actual ^f	Intermediate Sanction	
07/11	11853	11767	4	-86	7396	11623	11524	4	-99	9801	443	420	5	428	436	5	
08/11	11851	11802	0	-49	2401	11621	11554	0	-67	4489	438	467	0	377	431	3	
09/11	11869	11834	3	-35	1225	11639	11580	3	-59	3481	414	431	3	448	399	3	
10/11	11862	11831	11	-31	961	11632	11585	11	-47	2209	438	410	3	415	405	0	
11/11	11876	11816	3	-60	3600	11646	11561	3	-85	7225	414	390	4	435	421	0	
12/11	11893	11807	4	-86	7396	11662	11546	4	-116	13456	412	424	2	463	444	4	
01/12	11872	11845	2	-27	729	11642	11591	2	-51	2601	370	409	1	432	372	0	
02/12	11887	11754	2	-133	17689	11656	11552	2	-104	10816	431	390	1	436	424	1	
03/12	11871	11756	1	-115	13225	11641	11502	1	-139	19321	441	411	0	427	465	1	
04/12	11852	11762	1	-90	8100	11622	11499	1	-123	15129	415	420	1	435	416	1	
05/12	11850	11794	1	-56	3136	11620	11525	1	-95	9025	429	439	1	420	407	1	
06/12	11842	11852	0	10	100	11612	11586	0	-26	676	440	407	0	448	350	1	
07/12	11853	11879	0	26	676	11623	11607	0	-16	256	443	417	0	406	385	0	
08/12	11842	11962	0	120	14400	11612	11692	0	80	6400	439	441	0	448	382	0	
09/12	11845	11938	0	93	8649	11615	11664	0	49	2401	415	390	0	412	414	0	
10/12	11832					11602		0			438			446			
11/12	11829					11600		0			415			411			
12/12	11854					11624		0			413			407			
01/13	11891					11660		0			371			434			
02/13	11901					11670		0			432			402			
03/13	11897					11666		0			442			423			
04/13	11872					11642		0			416			444			
05/13	11889					11658		0			429			416			
06/13	11811					11582		0			441			406			
ACT AVG-TO-DATE	11826.60		2.13	-34.60	5,979	11632.08	11571.2	2.13	-59.87	7,152	425.47	417.73		429	408.73		
RMSE TO-DATE^g	77.32						84.57										
% RMSE/AVG TO-DATE^h	0.65%						0.73%										

^a The prison population inclusive of residential confinement inmates, escapees, and prisoners serving a sentence out of state.
^b The in-house prison population consists of all inmates housed at an NDOC correctional location, and prisoners temporarily housed at a jail or admitted to a hospital.
^c Offenders admitted to the NDOC during the current biennium.
^d Offenders released to the NDOC during the current biennium.
^e Prisoner population forecasts derived by the JFA Institute/JFA Associates.
^f The actual prison population of the NDOC exclusive of intermediate sanction offenders temporarily housed at CGTH. These offenders were not factored into the forecasts.
^g The Root Mean Squared Error is the squared root of the average of the squared differences between the actual and the forecast observations.
^h The Root Mean Squared Error as percentage of the actual average to date is a measure of prediction.

Male Population Comparison

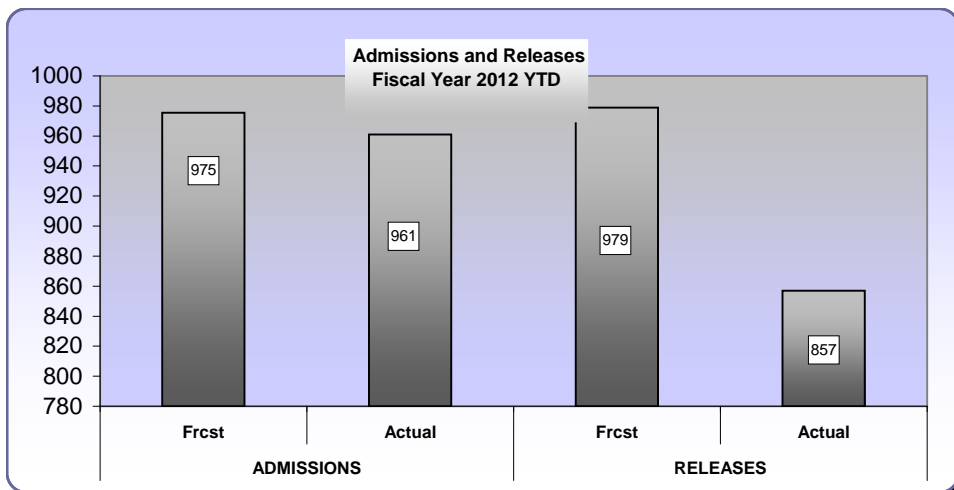
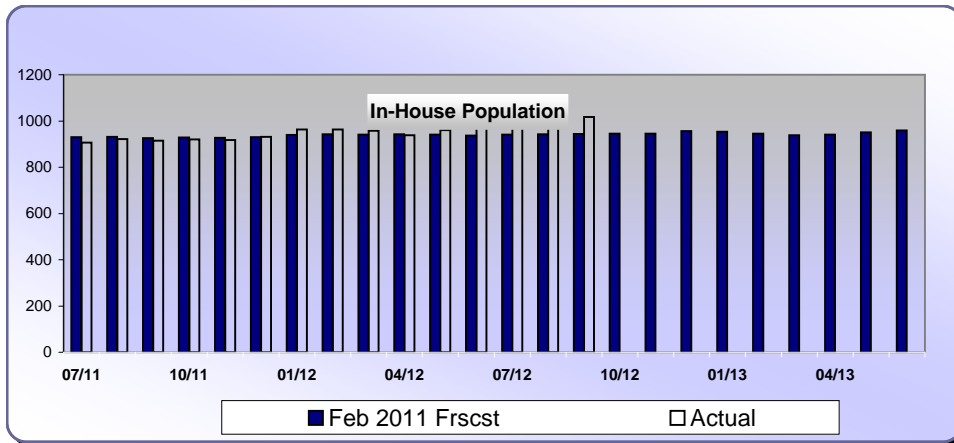
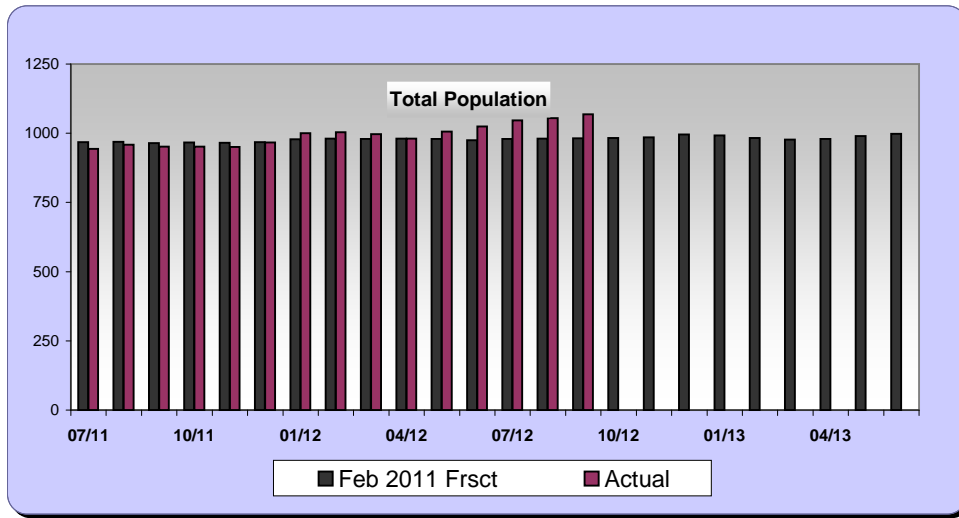


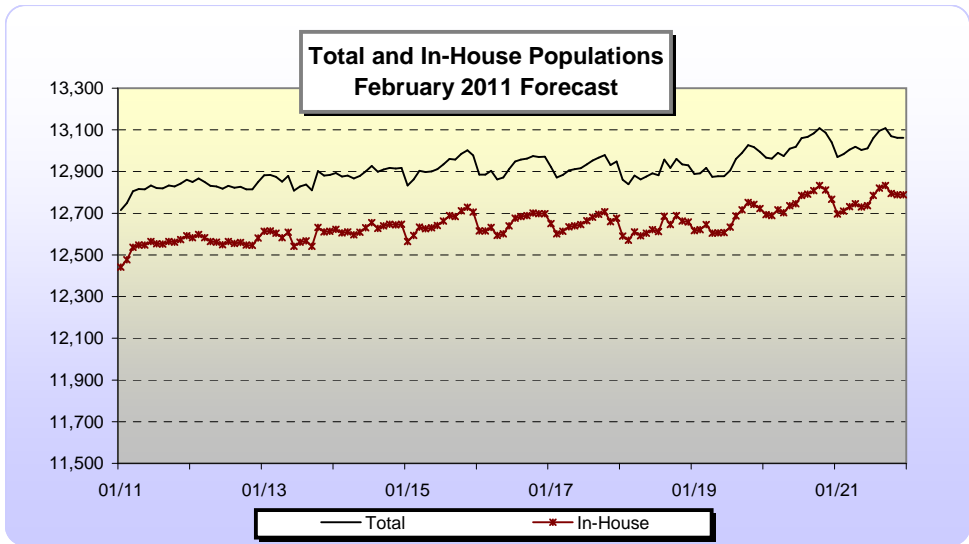
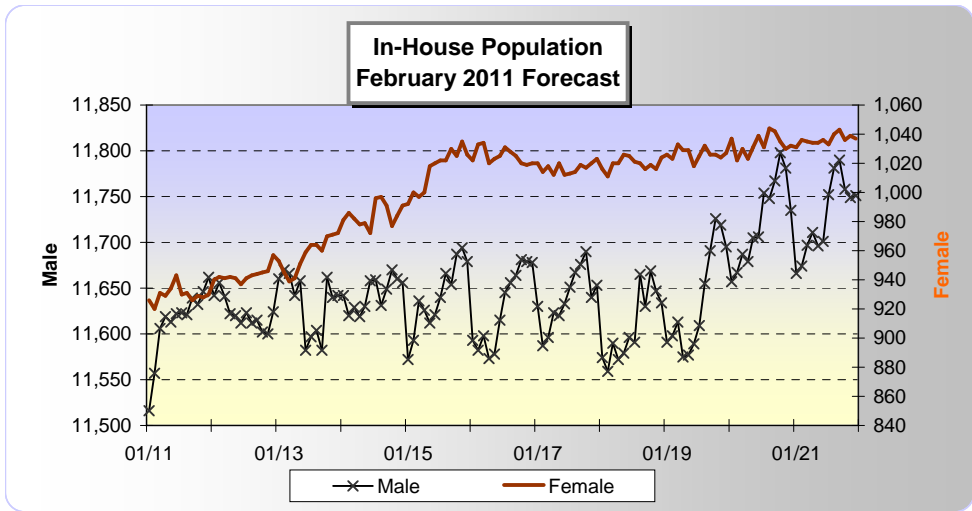
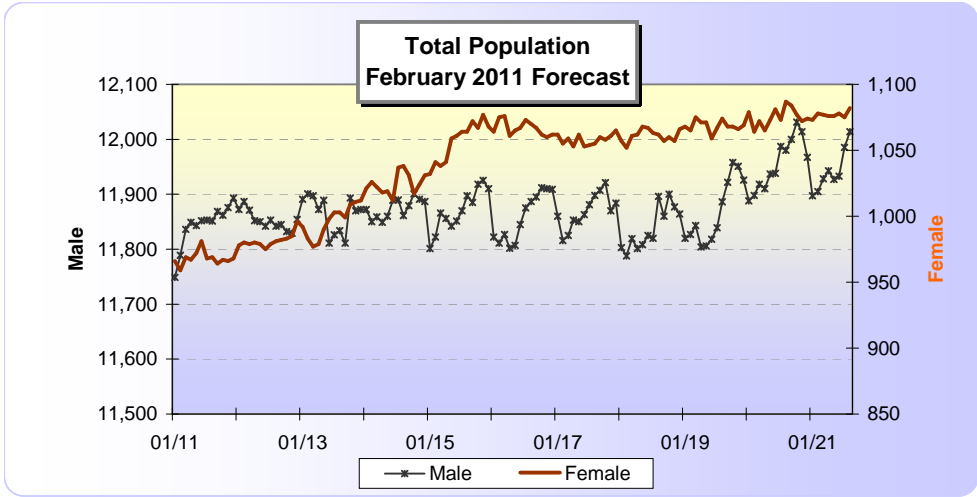
Monthly Population Statistics

Projected vs. Actual Female Population													
Month Year	TOTAL ^a				IN-HOUSE ^b				ADMISSIONS ^c		RELEASES ^d		
	Frcst ^e	Actual ^f	Intermediate Sanction	Act-Frcst	Frcst ^e	Actual ^f	Intermediate Sanction	Act-Frcst	Frcst ^e	Actual ^f	Frcst ^e	Actual ^f	
07/11	968	943	0	-25	930	906	0	-24	67	52	61	59	
08/11	969	959	0	-10	931	922	0	-9	66	70	70	56	
09/11	964	952	0	-12	926	915	0	-11	65	49	72	53	
10/11	967	952	0	-15	929	921	0	-8	64	65	67	65	
11/11	966	950	0	-16	928	917	0	-11	63	63	70	67	
12/11	968	967	0	-1	930	931	0	1	67	58	67	55	
01/12	978	1000	0	22	940	964	0	24	66	78	60	46	
02/12	980	1004	0	24	942	964	0	22	65	57	63	53	
03/12	979	997	0	18	941	958	0	17	68	53	64	60	
04/12	980	981	0	1	942	938	0	-4	62	57	75	71	
05/12	979	1006	0	27	941	961	0	20	65	77	49	52	
06/12	975	1025	0	50	937	978	0	41	66	72	50	53	
07/12	979	1046	0	67	941	994	0	53	66	74	63	58	
08/12	981	1055	0	74	943	1006	0	63	63	66	61	53	
09/12	982	1069	0	87	944	1017	0	73	64	70	87	56	
10/12	983				945				67		62		
11/12	985				946				67		73		
12/12	996				957				68		50		
01/13	992				953				67		58		
02/13	983				945				66		72		
03/13	977				939				66		71		
04/13	979				941				64		60		
05/13	990				951				67		60		
06/13	998				959				63		60		
ACT AVG-TO-DATE	994			19.40		952.80			65.0	64.1	65.3	57.1	
RMSE TO-DATE^g	39.58					33.18							
% RMSE/AVG TO-DATE^h	3.98%					3.48%							
CUMULATIVE TO-DATE									975	961	979	857	

^a The prison population inclusive of residential confinement inmates, escapees, and prisoners serving a sentence out of state.
^b The in-house prison population consists of all inmates housed at an NDOC correctional location, and prisoners temporarily housed at a jail or admitted to a hospital.
^c Offenders admitted to the NDOC during the current biennium.
^d Offenders released to the NDOC during the current biennium.
^e Prisoner population forecasts derived by the JFA Institute/JFA Associates.
^f The actual prison population of the NDOC exclusive of intermediate sanction offenders temporarily housed at CGTH. These offenders were not factored into the forecasts.
^g The Root Mean Squared Error is the squared root of the average of the squared differences between the actual and the forecast observations.
^h The Root Mean Squared Error as percentage of the actual average to date is a measure of prediction.

Female Population Comparison





**Monthly Program Comparison
Per NRS 209.391
Calendar Yr 2012**

Education Programs	Jan	Feb	Mar	Apr	May	June	July	Aug	Sep	Oct	Nov	Dec	Total
GED (30) & (60)	237	82	149	244	269	205	173	114	474				1,947
High School Diploma (60) & (90)	1,132	443	529	438	552	26	597	874	1,135				5,726
College Certificate (0) & (60)	24				0		23	26	26				99
AA First or Second (90) & (120)	12	5	5	5	9	11	4	33	31				115
BA/BS (0) & (90)	1	1	1	1	1	1							5
MA/MS (0) & (90)/PhD	0	0	0	0	0	0							0
Total	1,406	531	684	688	830	243	797	1,047	1,666	0	0	0	7,892
Vocational Classes	Jan	Feb	Mar	Apr	May	Jun	July	Aug	Sep	Oct	Nov	Dec	Total
Advanced Computers (60)	1	3	1		3	2			20				30
Air Conditioning and Heating (60)			4		3				22				29
Auto CAD (60)					0								0
Auto Mechanics/Auto Shop (60)	15		21										36
Automotive Technology (60)	12		3	2	6		6	6	19				54
Business (60)			1		6				32				39
Collision Repair (60)													0
Computers (60)	99	61	110	63	6	61	60		31				491
Construction (60)			9						25				34
Culinary (60)	40	36	36	38		36	36		28				250
Drafting (60)				0	0								0
Dry Cleaning (60)			66				7	6	6				85
Entrepreneurship (60)	71												71
English as a Second Language (60)									13				13
Green Technology (60)		1							35				36
Plant Science Horticulture (60)	50		0		4	0	54	40	39				187
Welding (60)													0
Total	288	101	251	103	28	99	163	52	270	0	0	0	1,355
Correctional Classes	Jan	Feb	Mar	Apr	May	Jun	July	Aug	Sep	Oct	Nov	Dec	Total
ABCs of Parenting / Nurturing Families/ Parent	20	12	13	9	14	10	15	20	32				145
Anger Management	174	113	77	75	53	230	174	105	126				1,127
"Cage Your Rage"	202	62	91	130	21	116	187	174	174				1,157
"Commitment to Change" Core Program	208	312	268	245	235	314	599	480	547				3,208
Communications		25		15	0			0	0				40
Conflict Resolution	16						73	31	12				132
Domestic Violence	18	18	0	0	16	11	38	64	15				180
Emotions Mgt/ SOS Help for Emotions	102	76	69	113		78	105	87	25				655
Family	19	0						40					59
Family Reunification (Re-Entry)							19	19	41				79
Fitness and Wellness													0
Gang Aftercare							14						14
Gang Awareness						14		14					28
Health-Related Recovery			20	19									39
Inside/Outside Dads	87	0		4		0		23	0				114
Maternal Health and Child Care	12				20				24				56
New Beginnings	86	25	29	94	67	101	231	216	147				996
<i>Continued on the next page</i>	0	0	0										0
Correctional Classes (Cont'd)	Jan	Feb	Mar	Apr	May	Jun	July	Aug	Sep	Oct	Nov	Dec	Total
One World	0	40							50				90
Parenting	31	11	58	31	15		24	20	40				230
Peaceful Solutions	11	0					58	22					91
Relationship Skills	30	31	9	9	20	0	23	22	82				226
Seeking Safety	12	15	15	13		13	21	9	15				113
Senior Structured Living "True Grit" Program	122	176	10	10	10	27	10	10	10				375
S.M.A.R.T. Choices (Ren-entry)		0						0	0				0
STEPS													0
STOP Sex Offender Core Program I, II, III, IV	120	20	13	8	0	15	160	144	180				660
Stress/Anxiety Management	0		123		0		20		13				156
Structured Living Program: Basic Training	83	0		0			84	11	11				189
Structured Living Program: Residence									0				0
Surviving Sexual Assault /SOAR							17	30	7				54
"Thinking for a Change"								39					39
"Unbearable Stress"	29	0			17	57	0	0					103
Victim Awareness/ Empathy	85	119	171	71	60	230	104	168	231				1,239
Women's Health	12	26	59					48	41				186
Total	1,479	1,081	1,025	846	548	1,216	1,976	1,724	1,885	0	0	0	11,780
Substance Abuse Treatment Programs	Jan	Feb	Mar	Apr	May	Jun	July	Aug	Sep	Oct	Nov	Dec	Total
Addiction Prevention Education Core Program	244	113	246	147	95	126	203	118	180				1,472
Aftercare from Therapeutic Community	0	121	15	11	32	20	8	0	10				217
ANCHOR Program													0
ARCH Therapeutic Community I, II, III	75	0	94	0	0	0	87	11	14				281
Moral Recognition Therapy													0
OASIS	183	116	118	11	11	72	23	8	0				542
Total	502	350	473	169	138	218	321	137	204	0	0	0	2,512
Job Skills Programs	Jan	Feb	Mar	Apr	May	Jun	July	Aug	Sep	Oct	Nov	Dec	Total
Braille I, II, & III (30 ea.)	0	0	0	0	0	0	0	0	54				54
Job Readiness Skills	60	61	53	53		23	40	63	46				399
Commercial Drivers License (10)													0
Financial Literacy (30)		1		2	2								5
Floral Design (UNR Coop. Ext.) (15)													0
Forklift Operating Training (10)	1	1	1		15		0	0					18
Horticulture (UNR Coop. Ext.) (30)													0
Master Gardener (UNR Coop. Ext.) (30)													0
Job Survival Skills (10)					29								29
OSHA 10- Construction Safety (1)		43	6		40		0	2	2				93
ServeSafe (30)													0
Photovoltaic (10)				30	18	20	116	126	10				320
Welding (Re-entry) (10)													0
Total	61	106	60	85	104	43	156	191	112	0	0	0	918
NDF Programs	Jan	Feb	Mar	Apr	May	Jun	July	Aug	Sep	Oct	Nov	Dec	Total
Certified Arborist (30)													-
Firefighting, Basic (30)	226	274	277	171	168	195	204	123	134				1,772
Helitack Helicopter Firefighting (30)													-
Total	226	274	277	171	168	195	204	123	134	-	-	-	1,772
Grand Total	3,962	2,443	2,770	2,062	1,816	2,014	3,617	3,274	4,271	-	-	-	26,229

Monthly Program Completions
Per NRS 209.391
Calendar Year 2012

Education Programs	Jan	Feb	Mar	Apr	May	June	July	Aug	Sep	Oct	Nov	Dec	Total
GED (30) & (60)	13	13	17	53	22	52	26	4	2				202
High School Diploma (60) & (90)	20	20	7	27	55	68	10	15	9				231
College Certificate (0) & (60)	0	0	0	0	0	1	0	0	1				2
AA First or Second (90) & (120)	0	0	0	0	0	0	0	0	0				0
BA/BS (0) & (90)	0	0	0	0	0	0	1						1
MA/MS (0) & (90)/PhD	0	0	0	0	0	0	0	0	0				0
Total	33	33	24	80	77	121	37	19	12	0	0	0	436
Vocational Classes	Jan	Feb	Mar	Apr	May	June	July	Aug	Sep	Oct	Nov	Dec	Total
Advanced Computers (60)	1	1	3	1		3	2						11
Air Conditioning and Heating (60)				4		3							7
Auto CAD (60)						10							10
Auto Mechanics/Auto Shop (60)	0	0		3									3
Automotive Technology (60)	0	0		0	2	6		0	6				14
Business (60)				1		6							7
Collision Repair (60)													0
Computers (60)	1	1	1	3	2	6	6	0					20
Construction (60)				9									9
Culinary (60)	4	4	10	1	6		4	2					31
Drafting (60)					2	2							4
Dry Cleaning (60)				0				0	0				0
Entrepreneurship (60)	0	0											0
English as a Second Language (60)													0
Green Technology (60)			0										0
Plant Science Horticulture (60)	2	2		1		0	1	0	0				6
Welding (60)													0
Total	8	8	14	23	12	36	13	2	6	0	0	0	122
Correctional Classes	Jan	Feb	Mar	Apr	May	June	July	Aug	Sep	Oct	Nov	Dec	Total
ABCs of Parenting / Nurturing Families/ Parent/Teen	2	2	3	1	4	2	2	1	1				18
Anger Management	101	101	87	1	48	40	82	79	56				595
"Cage Your Rage"	25	25	89	14	59	11	42	138	95				498
"Commitment to Change" Core Program	57	57	112	127	83	110	152	155	248				1101
Communications			0		15	15			11				41
Conflict Resolution	13	13						0	22				48
Domestic Violence	0	0	16	5	1	0	10	0	48				80
Emotions Mgr/ SOS Help for Emotions	0	0	56	37	14		1	85	73				266
Family	15	15	15										45
Fitness and Wellness													0
Gang Aftercare								0	0				0
Gang Awareness								0	14				14
Health-Related Recovery				0	19								19
Houses of Healing (Re-Entry)	87	87	6		0		4		27				211
Inside/Outside Dads	12	12				12							36
Maternal Health and Child Care													0
New Beginnings	50	50	49	13	24	60	58	62	56				422
<i>Continued on the next page</i>													0
Correctional Classes (Cont'd)	Jan	Feb	Mar	Apr	May	June	July	Aug	Sep	Oct	Nov	Dec	Total
One World	120	120	36										276
Parenting	16	16	0	1	15	1		0	6				55
Peaceful Solutions	11	11	11					0					33
Relationship Skills	12	12	12	8	8	0	20	0	22				94
Senior Structured Living "True Grit" Program	0	0											0
S.M.A.R.T. Choices (Re-entry)			15	0	0		9	0	9				33
STEPS			6						6				12
STOP Sex Offender Core Program I, II, III, IV	0	0	8	79	0	0	7	19	0				113
Stress/Anxiety Management	17	17		0		29		0					63
Structured Living Program: Basic Training	0	0	1		2			4	23				30
Structured Living Program: Residence	122	122	0	0	0	0	0	122					366
Surviving Sexual Assault /SOAR								0	0				0
"Thinking for a Change"									35				35
"Unbearable Stress"	29	29	29			0	22	42	42				193
Victim Awareness/ Empathy	48	48	0	27	11	74	51	24	63				346
Women's Health	12	12	12	5					26				67
Total	749	749	563	318	303	354	460	731	883	0	0	0	5110
Substance Abuse Treatment Programs	Jan	Feb	Mar	Apr	May	June	July	Aug	Sep	Oct	Nov	Dec	Total
Addiction Prevention Education Core Program	120	120	52	88	38	10	137	0	21				586
Aftercare from Therapeutic Community			2	1	0	16							19
ANCHOR Program													0
ARCH Therapeutic Community I, II, III	19	19						4	18				60
Moral Recognition Therapy													0
OASIS	20	20	0	0	0	1	0	5	12				58
Total	159	159	54	89	38	27	137	9	51	0	0	0	723
Job Skills Programs	Jan	Feb	Mar	Apr	May	June	July	Aug	Sep	Oct	Nov	Dec	Total
Braille I, II, & III (30 ea.)	0	0	0	0	2	7	3	0	0				12
Job Readiness Skills	54	54	57	51	47		22	40	62				387
Commercial Drivers License (10)													0
Financial Literacy (30)			1		0	2							3
Floral Design (UNR Coop. Ext.) (15)													0
Forklift Operating Training (10)	0	0	0	0		15		15	15				45
Horticulture (UNR Coop. Ext.) (30)													0
Master Gardener (UNR Coop. Ext.) (30)													0
Job Survival Skills (10)							24						24
OSHA 10- Construction Safety (1)													0
ServeSafe (30)			42	6		40		40	40				168
Photovoltaic (10)					19	9	19	103	111				261
Welding (Re-entry) (10)	7	7	11	14	0	19	13		4				75
Total	61	61	111	71	68	116	57	198	232	0	0	0	975
NDF Programs	Jan	Feb	Mar	Apr	May	June	July	Aug	Sep	Oct	Nov	Dec	Total
Certified Arborist (30)													0
Firefighting, Basic (30)	150	150	200	198	75	73	104	86	105				1141
Helitack Helicopter Firefighting (30)													0
Total	150	150	200	198	75	73	104	86	105	0	0	0	1141
Grand Total	1160	1160	966	779	573	727	808	1045	1289	0	0	0	8507

CRIME STATISTICS^a

Year	NV/U.S... Rate ^b	Population ^c	Violent Crime	Murder and No negligent Manslaughter	Forcible Rape	Robbery	Aggravated Assault	Property Crime	Burglary	Larceny-Theft	Motor Vehicle Theft
2006	NEVADA Rate ₍₃₎	2,495,529	18,508 741.6	224 9.0	1,079 43.2	7,027 281.6	10,178 407.8	102,036 4,088.8	24,820 994.6	50,255 2,013.8	26,961 1,080.4
	U.S. Rate ₍₃₎	299,398,484	1,418,043 473.6	17,030 5.7	92,757 31.0	447,403 149.4	860,853 287.5	9,963,568 3,334.5	2,183,746 729.4	6,607,013 2,208.8	1,192,809 398.4
2007	NEVADA Rate ₍₃₎	2,565,382	19,257 750.6	192 7.5	1,096 42.7	6,832 270.2	11,037 430.2	96,916 3,777.8	24,840 968.3	49,745 1,939.1	22,331 870.5
	U.S. Rate ₍₃₎	301,621,157	1,408,337 466.9	16,929 5.6	90,427 30	445,125 147.6	855,856 283.8	9,843,481 3,263.5	2,179,140 722.5	6,568,572 2,177.8	1,095,769 363.3
2008	NEVADA Rate ₍₃₎	2,600,167	18,837 724.5	163 6.3	1,102 42.4	6,473 248.9	11,099 426.9	89,640 3,447.50	24,156 9,290.0	49,581 1,906.8	15,903 611.6
	U.S. Rate ₍₃₎	304,059,724	1,382,012 454.5	16,772 5.4	89,000 29.3	441,855 145.3	834,885 274.6	9,767,915 3,212.5	2,222,196 730.8	6,588,873 2,167	956,846 314.7
2009	NEVADA Rate ₍₃₎	2,643,085	18,559 702.2	157 5.9	1,021 38.6	6,021 227.8	11,360 429.8	80,763 3,055.6	21,994 832.1	46,390 1,755.1	12,379 468.4
	U.S. Rate ₍₃₎	307,006,550	1,318,398 429.4	15,241 5	88,097 28.7	408,217 133	806,843 262.8	9,320,971 3,036.1	2,199,125 716.3	6,327,230 2,061	794,616 258.8
2010	NEVADA Rate ₍₃₎	2,704,283	17,929 663	158 5.8	965 35.7	5,298 195.9	11,508 425.5	75,004.0 2,773.5	22,286 824.1	42,533 1,573	10,185 376.6
	U.S. Rate ₍₃₎	308,745,538	1,246,248 403.6	14,748 4.8	84,767 27.5	367,832 119.1	778,901 252.3	9,082,887 2,941.9	2,159,878 699.6	6,185,867 2,003.5	737,142 238.8
2011	NEVADA Rate ₍₃₎	2,723,322	15,309 562.1	141 5.2	912 33.5	4,299 157.9	9,957 365.6	69,731 2,560.5	20,214 742.3	40,032 1,470.0	9,485 348.3
	U.S. Rate ₍₃₎	311,591,917	1,203,564 386.3	14,612 4.7	83425 26.8	354,396 113.7	751,131 241.1	9,063,173.0 2,908.7	2188005 702.2	6,159,795.0 1,976.9	715,373 229.6
% Change 06-07	NEVADA	2.80%	4.05%	-14.29%	1.58%	-1.35%	8.44%	-5.02%	0.08%	-1.01%	-17.17%
	U.S.	0.7%	-0.68%	-0.59%	-2.51%	-0.51%	-0.58%	-1.40%	-0.21%	-0.58%	-8.14%
% Change 07-08	NEVADA	1.4%	-2.2%	-15.1%	0.5%	-6.6%	0.6%	-7.5%	-2.8%	-0.3%	-28.8%
	U.S.	0.8%	-1.9%	-3.9%	-1.6%	-0.7%	-2.5%	-0.8%	2.0%	0.3%	-12.7%
% Change 08-09	NEVADA	1.65%	-3.08%	-6.35%	-8.96%	-8.48%	0.68%	-11.37%	-91.04%	-7.96%	-23.41%
	U.S.	0.97%	-4.60%	-6.34%	-1.01%	-7.61%	-3.36%	-4.58%	-1.04%	-3.97%	-16.95%
% Change 09-10	NEVADA	2.32%	-3.39%	0.64%	-5.48%	-12.01%	1.30%	-7.13%	1.33%	-8.31%	-17.72%
	U.S.	0.57%	-5.47%	-3.23%	-3.78%	-9.89%	-3.46%	-2.55%	-1.78%	-2.23%	-7.23%
% Change 10-11	NEVADA	0.70%	-14.61%	-10.76%	-5.49%	-18.86%	-13.48%	-7.03%	-9.30%	-5.88%	-6.87%
	U.S.	0.92%	-3.43%	-0.92%	-1.58%	-3.65%	-3.57%	-0.22%	1.30%	-0.42%	-2.95%

CRIME INDICATORS AND THE ECONOMY

Nevada Summary--2011		U.S. Summary -- 2011		
Population	▲ 0.70%	▲ 0.92%	▲ 0.92%	Population isn't growing as rapidly as in 2007 and crime rates are declining.
Violent Crime	▼ -14.61%	▼ -3.43%	▼ -3.43%	This factor is believed to be the result of, among other factors, declining birth rates, a higher unemployed population staying at home hindering thieves and other crime activity, or residents moving to other states to seek other work opportunities.
Murder & Manslgr	▼ -10.76%	▼ -0.92%	▼ -0.92%	
Rape	▼ -5.49%	▼ -1.58%	▼ -1.58%	
Robbery	▼ -18.86%	▼ -3.65%	▼ -3.65%	The Nevada Department of Corrections offers several educational and vocational programs and work opportunities for its offender population with the intent of providing them gainful skills while incarcerated and upon release.
Aggrvd Assault	▼ -13.48%	▼ -3.57%	▼ -3.57%	
Property Crime	▼ -7.03%	▼ -0.22%	▼ -0.22%	
Burglary	▼ -9.30%	▲ 1.30%	▲ 1.30%	The performance of the economy, mass layoffs, and the lack of work opportunities could potentially have an impact on ex-offenders who are seeking work opportunities, and, in turn, lead to higher recidivism.
Larceny	▼ -5.88%	▼ -0.42%	▼ -0.42%	
Motor Vehicle	▼ -6.87%	▼ -2.95%	▼ -2.95%	
Arson	N/A	N/A	N/A	

LABOR FORCE INDICATORS^d

	Dec'11	Mar'12	June'12	Sep'12	% Change Apr'12-Mar'12	% Change June'12-Sep'12
Law Enforcement-NV (estimates & projections)	8,340	8,340	8,340	8,340	N/A	N/A
Labor Force-NV-Seasonally Adjstd	1,317,331	1,365,022	1,206,792	1,366,609	-11.59%	13.24%
Employment-NV-Seasonally Adjstd	1,151,038	1,201,454	1,065,300	1,205,050	13.64%	-11.74%
Unemployment Rate-NV (Undjst)	12.60%	12.00%	11.60%	11.80%	-3.33%	1.72%
Total Personal Income-NV	\$103,956,791,000	N/A	N/A	N/A	N/A	N/A
Per Capita Personal Income	\$38,173	N/A	N/A	N/A	N/A	N/A

^a <http://www.fbi.gov/stats-services/crimestats>; rates are per 100,000 persons.

^b Population figures are U.S. Census Bureau provisional estimates as of July 1 for each year.

^c Rate per 100,000 persons.

^d Labor data: Bureau of Labor Statistics <http://www.bea.gov/newsreleases/regional/spi/spqi_newsrelease.htm>; Nevada Department of Training, Labor, and Rehabilitation <<http://www.nevadaworkforce.com>>. Income data: <http://www.bea.gov>.