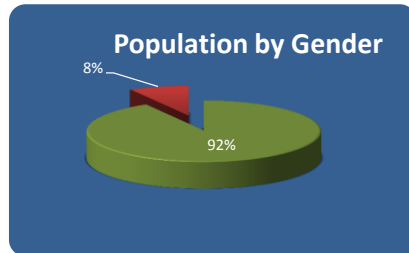




**QUARTER II FISCAL YEAR 2014  
STATISTICAL SUMMARY  
ACTIVITY FOR THE PERIOD OCTOBER TO DECEMBER 2013**

**Offender Demographics**



Total Population	
Average Age	
Male	39.10
Female	38.05

**Ethnicity and Gender**

Population	African American	American Indian	Asian	Caucasian	Cuban	Hispanic	Unknown	Total
<b>Male</b>	3,395 28.38%	210 1.76%	300 2.51%	5,247 43.86%	94 0.79%	2,647 22.13%	70 0.59%	11,963 100.00%
<b>Female</b>	236 21.63%	16 1.47%	34 3.12%	691 63.34%	- 0.00%	111 10.17%	3 0.27%	1,091 100.00%
<b>Total</b>	3,631 27.82%	226 1.73%	334 2.56%	5,938 45.49%	94 0.72%	2,758 21.13%	73 0.56%	13,054 100.00%

**Age Categories and Gender**

Population	<25	25-34	35-44	45-54	55-64	65-75	>75	Total
<b>Male</b>	1,456 12.17%	3,619 30.25%	2,931 24.50%	2,455 20.52%	1,087 9.09%	371 3.10%	44 0.37%	11,963 100.00%
<b>Female</b>	107 9.81%	374 34.28%	293 26.86%	222 20.35%	81 7.42%	11 1.01%	3 0.27%	1,091 100.00%
<b>Total</b>	1,563 11.97%	3,993 30.59%	3,224 24.70%	2,677 20.51%	1,168 8.95%	382 2.93%	47 0.36%	13,054 100.00%

**Offense Groups and Gender**

Population	Drug	DUI	Other	Property	Sex	Violence	Total
<b>Male</b>	1,689 14.12%	295 2.46%	131 1.10%	1,363 11.40%	2,489 20.80%	5,996 50.13%	11,963 100.00%
<b>Female</b>	258 23.65%	61 5.59%	23 2.11%	299 27.41%	36 3.30%	414 37.95%	1,091 100.00%
<b>Total</b>	1,947 14.91%	356 2.73%	154 1.18%	1,662 12.73%	2,525 19.34%	6,410 49.10%	13,054 100.00%

**Data Limitations:**

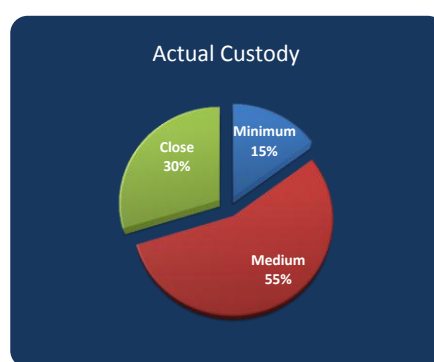
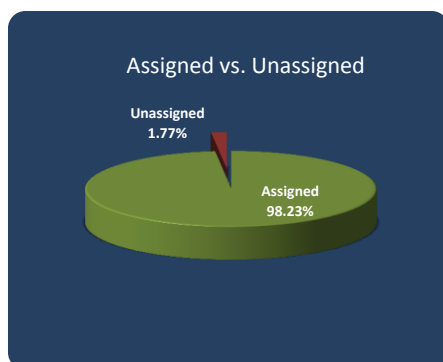
Data published in this report were extracted from a live database; thus, it is possible that figures reported in tables and charts do not balance to totals reported in other reports published by the Department of Corrections. Select distributions consist of estimates and are susceptible to rounding error and missing data which could have caused these distributions not to add up to exactly 100%. Current fiscal year data for the NDOC or for other agencies are not always available at time of edition; consequently, the NDOC performed its best effort to align data accordingly to derived estimates.

**Distribution of Offenders by Ethnicity and Correctional Location**

Location	Gender	American Indian	%	Asian	%	Black	%	Caucasian	%	Cuban	%	Hispanic	%	Unknown	%	Grand Total	%
CCC	Female	-	-	-	-	-	-	-	-	-	-	-	-	-	-	-	-
	Male	2	1.71%	1	0.85%	32	27.35%	49	41.88%	0	0.00%	32	27%	1	1%	117	100.00%
	Sub-total	2	1.71%	1	0.85%	32	27.35%	49	41.88%	0	0.00%	32	27%	1	1%	117	100.00%
CGTH	Female	0	0.00%	3	4.29%	12	17.14%	51	72.86%	0	0.00%	4	6%	0	0%	70	100.00%
	Male	0	0.00%	6	2.83%	53	25.00%	123	58.02%	1	0.47%	29	14%	0	0%	212	100.00%
	Sub-total	0	0.00%	9	3.19%	65	23.05%	174	61.70%	1	0.35%	33	12%	0	0%	282	100.00%
ECC	Female	-	-	-	-	-	-	-	-	-	-	-	-	-	-	-	-
	Male	1	0.83%	6	4.96%	48	39.67%	49	40.50%	1	0.83%	16	13.22%	0	0.00%	121	100.00%
	Sub-total	1	0.83%	6	4.96%	48	39.67%	49	40.50%	1	0.83%	16	13%	0	0%	121	100.00%
ESP	Female	-	-	-	-	-	-	-	-	-	-	-	-	-	-	-	-
	Male	17	1.59%	16	1.50%	332	31.03%	392	36.64%	11	1.03%	294	27.48%	8	0.748%	1,070	100.00%
	Sub-total	17	1.59%	16	1.50%	332	31.03%	392	36.64%	11	1.03%	294	27.48%	8	0.748%	1,070	100.00%
FMWCC	Female	11	1.34%	24	2.92%	179	21.80%	519	63.22%	0	0.00%	87	10.60%	1	0.122%	821	100.00%
	Male	-	-	-	-	-	-	-	-	-	-	-	-	-	-	-	-
	Sub-total	11	1.34%	24	2.92%	179	21.80%	519	63.22%	0	0.00%	87	11%	1	0%	821	100.00%
HCC	Female	-	-	-	-	-	-	-	-	-	-	-	-	-	-	-	-
	Male	6	4.55%	3	2.27%	48	36.36%	55	41.67%	1	0.76%	18	13.64%	1	0.76%	132	100.00%
	Sub-total	6	4.55%	3	2.27%	48	36.36%	55	41.67%	1	0.76%	18	13.64%	1	0.76%	132	100.00%
HDSP	Female	-	-	-	-	-	-	-	-	-	-	-	-	-	-	-	-
	Male	41	1.19%	106	3.08%	1108	32.22%	1268	36.87%	28	0.81%	874	25.41%	14	0.41%	3,439	100.00%
	Sub-total	41	1.19%	106	3.08%	1108	32.22%	1268	36.87%	28	0.81%	874	25.41%	14	0.41%	3,439	100.00%
JCC	Female	3	1.94%	6	3.87%	43	27.74%	86	55.48%	0	0.00%	16	10.32%	1	0.65%	155	100.00%
	Male	-	-	-	-	-	-	-	-	-	-	-	-	-	-	-	-
	Sub-total	3	1.94%	6	3.87%	43	27.74%	86	55.48%	0	0.00%	16	10.32%	1	0.65%	155	100.00%
LCC	Female	-	-	-	-	-	-	-	-	-	-	-	-	-	-	-	-
	Male	33	2.03%	35	2.15%	210	12.91%	843	51.81%	3	0.18%	490	30.12%	13	0.80%	1,627	100.00%
	Sub-total	33	2.03%	35	2.15%	210	12.91%	843	51.81%	3	0.18%	490	30.12%	13	0.80%	1,627	100.00%
NNCC	Female	2	20.00%	1	10.00%	-	0.00%	6	60.00%	-	0.00%	-	0.00%	1	10.00%	10	100.00%
	Male	45	3.24%	29	2.09%	272	19.58%	852	61.34%	10	0.72%	176	12.67%	5	0.36%	1,389	100.00%
	Sub-total	45	3.24%	29	2.09%	272	19.58%	852	61.34%	10	0.72%	176	12.67%	5	0.36%	1,389	100.00%
NNRC	Female	-	-	-	-	-	-	-	-	-	-	-	-	-	-	-	-
	Male	6	7.32%	2	2.44%	11	13.41%	60	73.17%	0	0.00%	3	3.66%	0	0.00%	82	100.00%
	Sub-total	6	7.32%	2	2.44%	11	13.41%	60	73.17%	0	0.00%	3	3.66%	0	0.00%	82	100.00%
PCC	Female	-	-	-	-	-	-	-	-	-	-	-	-	-	-	-	-
	Male	1	0.54%	8	4.35%	49	26.63%	89	48.37%	2	1.09%	34	18.48%	1	0.54%	184	100.00%
	Sub-total	1	0.54%	8	4.35%	49	26.63%	89	48.37%	2	1.09%	34	18.48%	1	0.54%	184	100.00%
SCC	Female	-	-	-	-	-	-	-	-	-	-	-	-	-	-	-	-
	Male	15	4.50%	10	3.00%	52	15.62%	198	59.46%	1	0.30%	55	16.52%	2	1%	333	100.00%
	Sub-total	15	4.50%	10	3.00%	52	15.62%	198	59.46%	1	0.30%	55	16.52%	2	1%	333	100.00%
SDCC	Female	-	-	-	-	-	-	-	-	-	-	-	-	-	-	-	-
	Male	17	0.87%	50	2.56%	874	44.80%	548	28.09%	29	1.49%	417	21.37%	16	1%	1,951	100.00%
	Sub-total	17	0.87%	50	2.56%	874	44.80%	548	28.09%	29	1.49%	417	21.37%	16	1%	1,951	100.00%
TCC	Female	-	-	-	-	-	-	-	-	-	-	-	-	-	-	-	-
	Male	4	2.88%	4	2.88%	36	25.90%	62	44.60%	2	1.44%	31	22.30%	0	0%	139	100.00%
	Sub-total	4	2.88%	4	2.88%	36	25.90%	62	44.60%	2	1.44%	31	22.30%	0	0%	139	100.00%
TLVCC	Female	-	-	-	-	-	-	-	-	-	-	-	-	-	-	-	-
	Male	2	0.87%	6	2.62%	74	32.31%	99	43.23%	4	1.75%	42	18.34%	2	1%	229	100.00%
	Sub-total	2	0.87%	6	2.62%	74	32.31%	99	43.23%	4	1.75%	42	18.34%	2	1%	229	100.00%
WCC	Female	-	-	-	-	-	-	-	-	-	-	-	-	-	-	-	-
	Male	1	0.89%	1	0.89%	35	31.25%	48	42.86%	0	0.00%	27	24.11%	0	0%	112	100.00%
	Sub-total	1	0.89%	1	0.89%	35	31.25%	48	42.86%	0	0.00%	27	24.11%	0	0%	112	100.00%
WSCC	Female	-	-	-	-	-	-	-	-	-	-	-	-	-	-	-	-
	Male	16	2.85%	10	1.78%	113	20.11%	353	62.81%	1	0.18%	65	11.57%	4	0.71%	562	100.00%
	Sub-total	16	2.85%	10	1.78%	113	20.11%	353	62.81%	1	0.18%	65	11.57%	4	0.71%	562	100.00%
Grand Total		221	1.73%	326	2.56%	3,581	28.10%	5,744	45.07%	94	0.74%	2,710	21.26%	69	0.54%	12,745	100.00%

## In-House Populations by Custody<sup>a b</sup> Exclusive of Safekeepers

Actual vs. Calculated Custody				
Females				
Calculated				
Actual	Minimum	Medium	Close	Total
Minimum	220	13	0	233
Medium	151	340	56	547
Close	74	131	65	270
Total	445	484	121	1,050
Males				
Calculated				
Actual	Minimum	Medium	Close	Total
Minimum	1439	207	4	1,650
Medium	1422	4322	707	6,451
Close	578	1608	1302	3,488
Total	3,439	6,137	2,013	11,589
Distribution of Custodies				
Females				
Calculated				
Actual	Minimum	Medium	Close	Total
Minimum	20.95%	1.24%	0.00%	22.19%
Medium	14.38%	32.38%	5.33%	52.10%
Close	7.05%	12.48%	6.19%	25.71%
Total	42.38%	46.10%	11.52%	100.00%
Males				
Calculated				
Actual	Minimum	Medium	Close	Total
Minimum	12.42%	1.79%	0.03%	14.24%
Medium	12.27%	37.29%	6.10%	55.66%
Close	4.99%	13.88%	11.23%	30.10%
Total	29.67%	52.96%	17.37%	100.00%
Actual Assigned and Unassigned Custody				
Gender	Assigned	Unassigned	Total	
Female	1015	35	1050	
	96.67%	3.33%	100.00%	
Male	11,400	189	11,589	
	98.37%	1.63%	100.00%	
Total	12,415	224	12,639	
	98.23%	1.77%	100.00%	



<sup>a</sup> Minimum custody is comprised of community assignment and minimum custodies, and close custody comprises unassigned, close, and maximum custodies. The former methods excluded inmates that had not been assigned to a custody on the query date.

<sup>b</sup> The in-house populations by gender don't always balance to the actual in-house populations reported in Report 1.1 dated as the last day of the month given that SKI, SKC, and SKF inmates are excluded from the distribution.

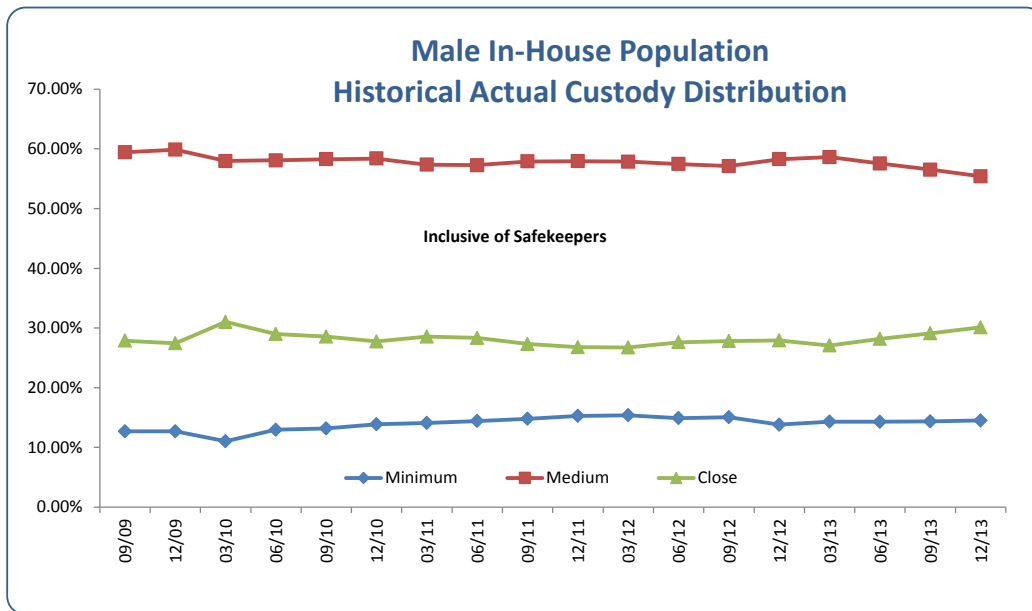
**HISTORICAL CUSTODY QUARTERLY ANALYSIS  
INCLUSIVE OF SAFEKEEPERS  
Fiscal Year Basis**

Actual Custody	Male Custody Distribution				Female Custody Distribution			
Month/Year	Minimum	Medium	Close	Total	Minimum	Medium	Close	Total
06/09	13.80%	59.58%	26.62%	100.00%	21.67%	60.73%	17.60%	100.00%
09/09	12.70%	59.42%	27.88%	100.00%	21.86%	56.90%	21.23%	100.00%
12/09	12.70%	59.86%	27.44%	100.00%	21.06%	57.04%	21.90%	100.00%
03/10	11.03%	57.96%	31.01%	100.00%	19.05%	56.49%	24.46%	100.00%
06/10	12.95%	58.07%	28.98%	100.00%	17.38%	70.58%	12.05%	100.00%
09/10	13.16%	58.27%	28.57%	100.00%	17.30%	69.64%	13.06%	100.00%
12/10	13.88%	58.38%	27.73%	100.00%	16.29%	70.61%	13.10%	100.00%
03/11	14.10%	57.36%	28.54%	100.00%	19.72%	63.16%	17.12%	100.00%
06/11	14.41%	57.27%	28.32%	100.00%	21.57%	65.93%	12.50%	100.00%
09/11	14.79%	57.90%	27.31%	100.00%	24.29%	60.89%	14.81%	100.00%
12/11	15.29%	57.94%	26.77%	100.00%	22.27%	67.02%	10.71%	100.00%
03/12	15.39%	57.85%	26.75%	100.00%	21.56%	53.81%	24.63%	100.00%
06/12	14.91%	57.47%	27.62%	100.00%	21.64%	51.59%	26.77%	100.00%
09/12	15.06%	57.12%	27.83%	100.01%	26.38%	47.24%	26.38%	100.00%
12/12	13.81%	58.27%	27.92%	100.00%	22.83%	50.85%	26.32%	100.00%
03/13	14.30%	58.63%	27.07%	100.00%	21.22%	52.52%	26.26%	100.00%
06/13	14.29%	57.55%	28.17%	100.01%	21.80%	53.82%	24.38%	100.00%
09/13	14.35%	56.53%	29.11%	99.99%	22.06%	52.96%	24.98%	100.00%
12/13	14.51%	55.39%	30.10%	100.00%	22.04%	51.94%	26.02%	100.00%

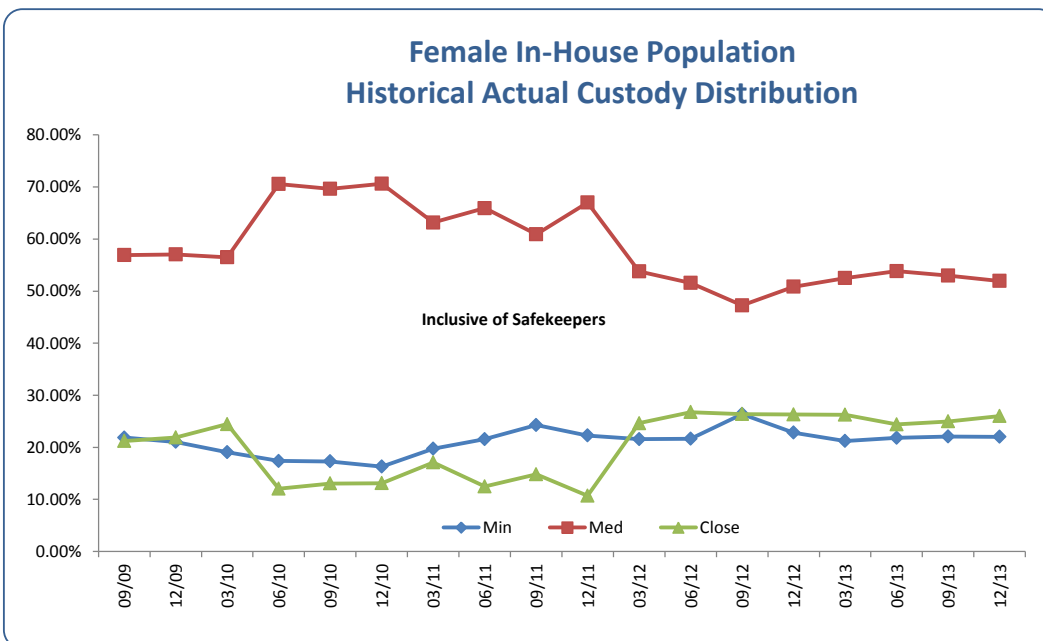
Fiscal Year 2013 To-Date Quarterly Average						
Measurement	Male			Female		
	Minimum	Medium	Close	Minimum	Medium	Close
Mean	14.37%	57.89%	27.75%	23.06%	51.11%	25.84%
Median	14.30%	57.91%	27.88%	22.32%	51.69%	26.29%
Standard Deviation	0.52%	0.68%	0.47%	2.31%	2.85%	0.97%
Range	1.25%	1.51%	1.10%	5.16%	6.58%	2.00%

Fiscal Year 2014 To-Date Quarterly Average						
Measurement	Male			Female		
	Minimum	Medium	Close	Minimum	Medium	Close
Mean	14.43%	55.96%	29.61%	22.1%	52.5%	25.5%
Median	14.43%	55.96%	29.61%	22.1%	52.5%	25.5%
Standard Deviation	0.11%	0.81%	0.70%	0.01%	0.01%	0.72%
Range	0.16%	1.14%	0.99%	0.02%	1.02%	1.04%

## Custody Distributions



**Male Population Custody Trends.** During the fourth quarter of Fiscal Year 2013, close custody increased by 4.06%, but minimum decreased slightly by .07% and medium decreased by 1.84%. On the average, throughout the fiscal year, minimum custody decreased by less than a full percentage point, medium increased by only .05%, and close increased by half of a percentage point. Close custody continues to increase into the first half of Fiscal Year 2014 by 3.37% and minimum custody by .77%. Medium custody, however, decreased by 1.89%.



**Female Population Custody Trend.** Custody levels for women during the last quarter of Fiscal Year 2013 exhibited pronounced differences relative to the third quarter. Close custody declined by 7.16%, medium increased by 2.48% and minimum increased by 2.73%. On the average, minimum increased by a full percentage point, medium by 1.24%, and close custody decreased by 2.27% during 2013. Close custody begins to increase again into the first half of 2014 by 3.31%, minimum custody also increases slightly by .55%. Medium custody, however, decreases by 1.76% during the first quarter of 2014.

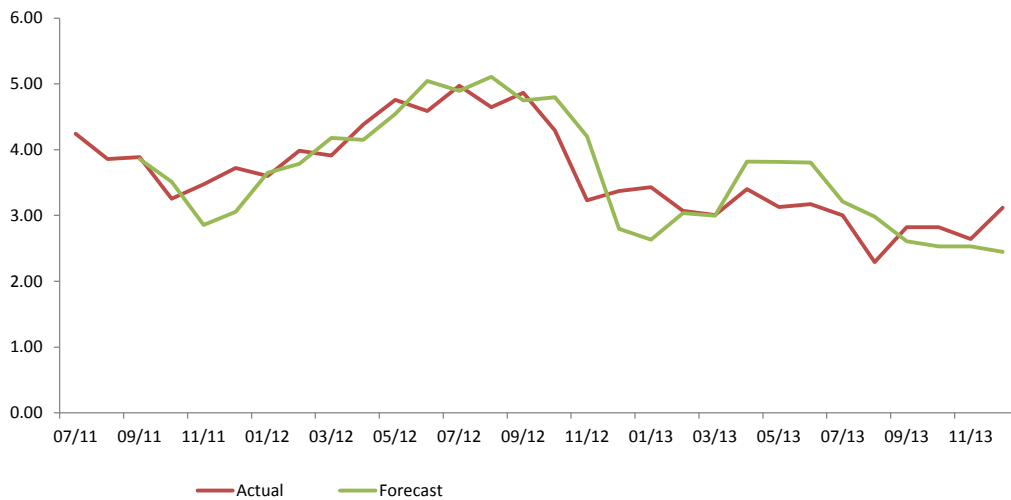
## Proportion of Non-Institutional Population

Female Population		
FY 2014	Actual	Forecast
07/13	3.00	3.21
08/13	2.29	2.98
09/13	2.82	2.61
10/13	2.82	2.53
11/13	2.64	2.53
12/13	3.12	2.45
01/14		2.60
02/14		2.75
03/14		2.82
04/14		2.85
05/14		2.78
06/14		2.76
Average	2.78	2.74

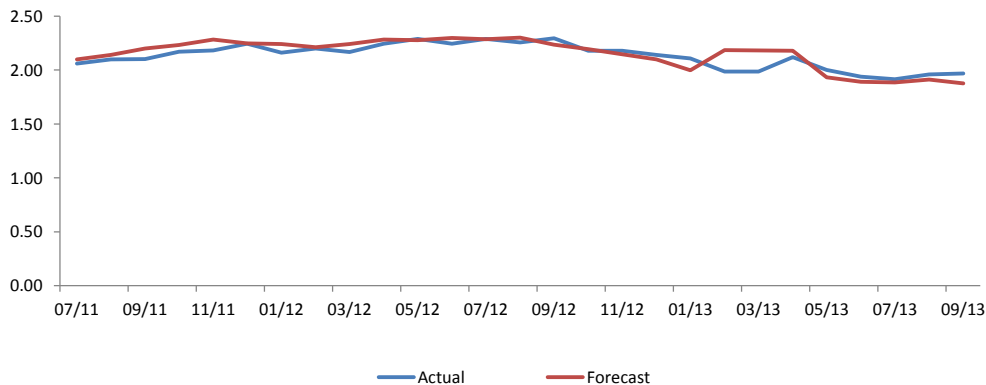
Male Population		
FY 2014	Actual	Forecast
07/13	1.92	1.93
08/13	1.96	1.89
09/13	1.97	1.89
10/13	1.88	1.91
11/13	1.87	1.88
12/13	1.96	1.85
01/14		1.90
02/14		1.88
03/14		1.87
04/14		2.02
05/14		2.08
06/14		2.13
Average	1.92	1.94

Forecast date: 04/29/2013

### Percentage of Female Non-Institutional Population

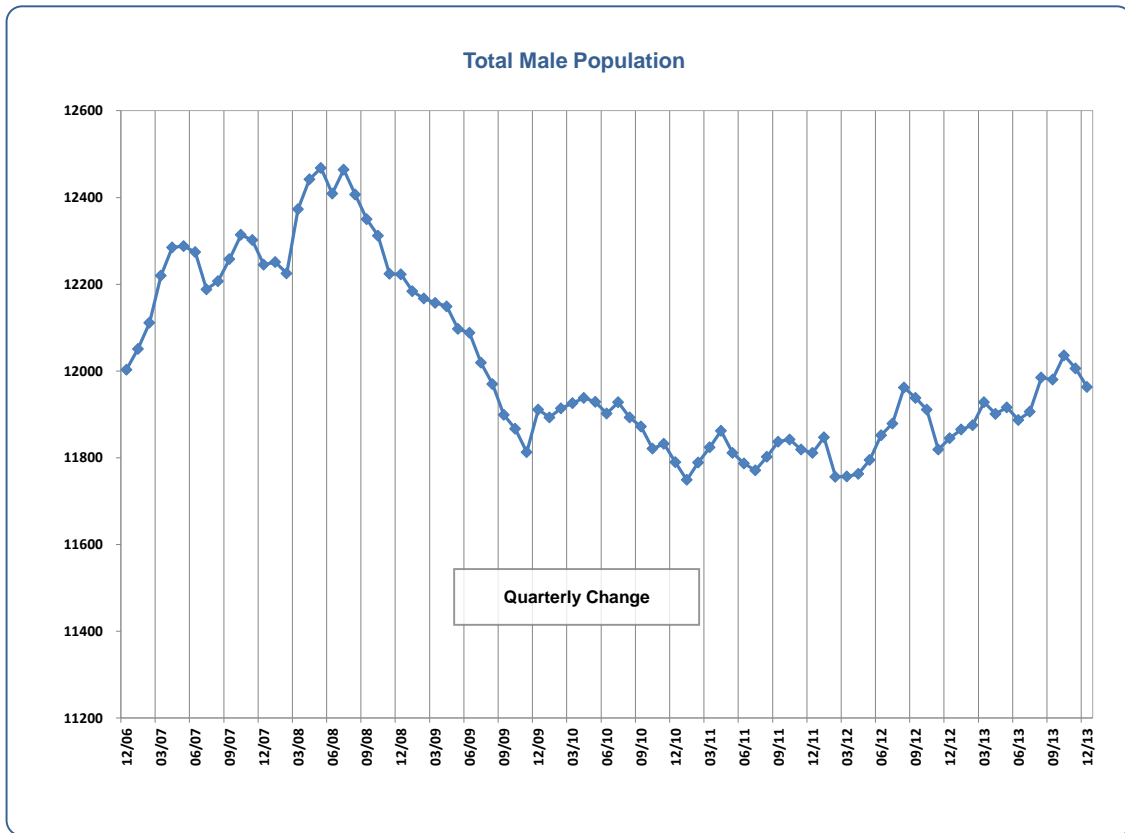


### Percentage of Male Non-Institutional Population

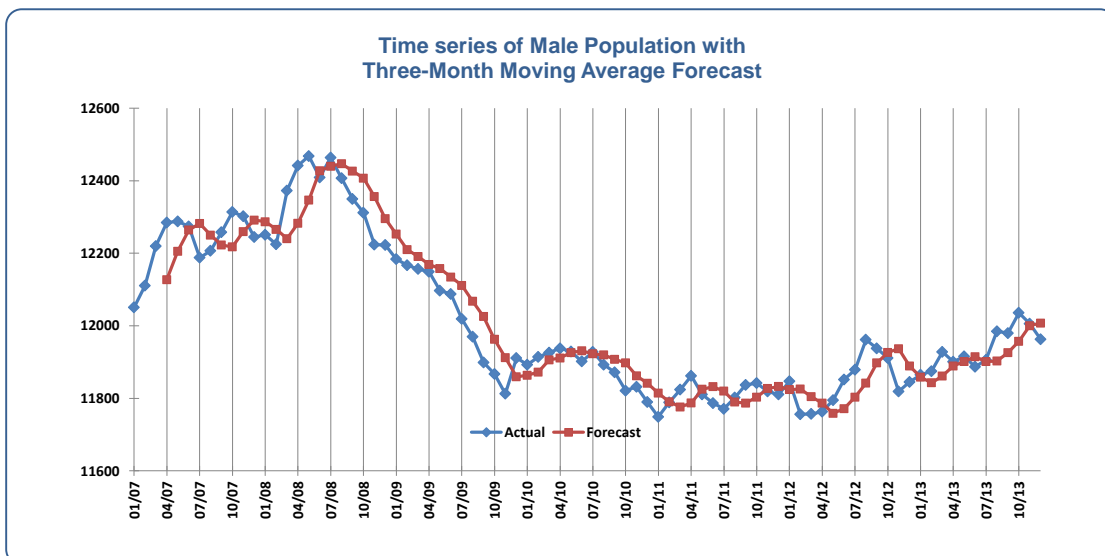


Note: The non-institutional population represents offenders not housed at an NDOC location, such as those on escape, on residential confinement, or serving a sentence out of state.

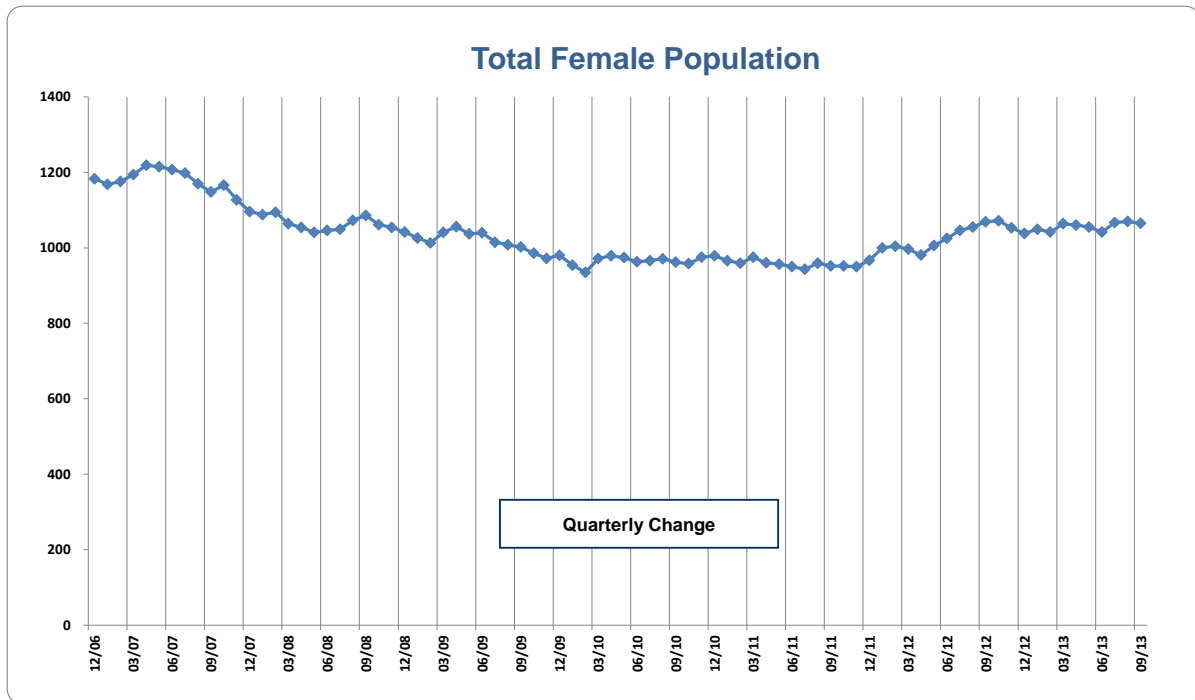
## Quarterly Analysis Male Population



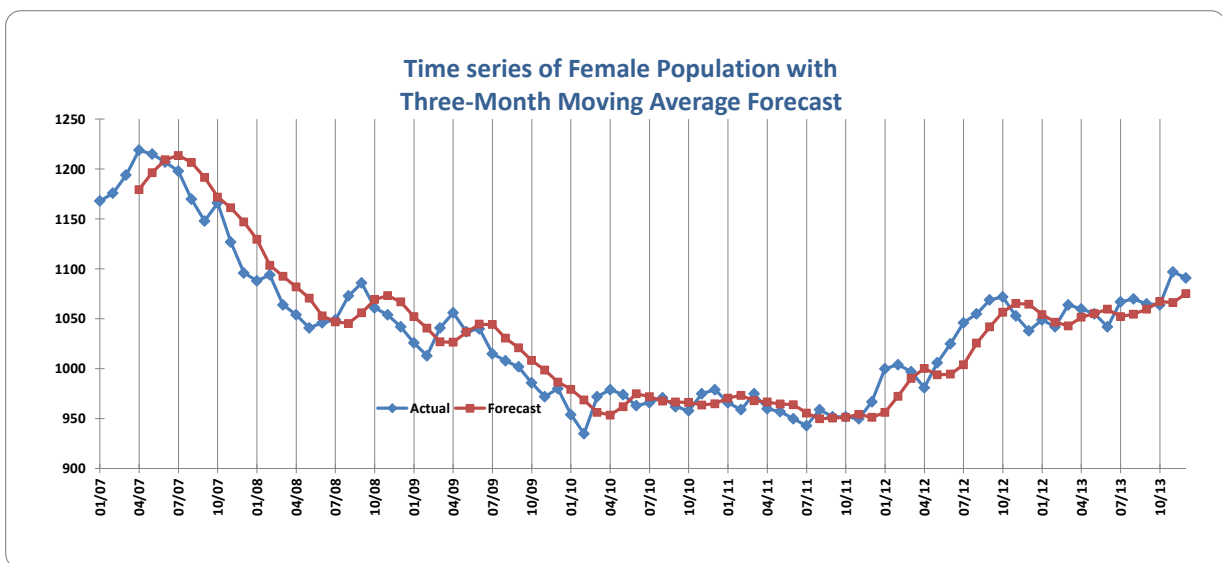
Year	2012				2013				2014			
Quarter	Q1	Q2	Q3	Q4	Q1	Q2	Q3	Q4	Q1	Q2	Q3	Q4
Change	50	-26	-54	95	86	-93	63	-41	93	-17		
% Change	0.42%	-0.22%	-0.46%	0.81%	0.73%	-0.78%	0.53%	-0.34%	0.78%	-0.14%		



Quarterly Analysis  
Female Population



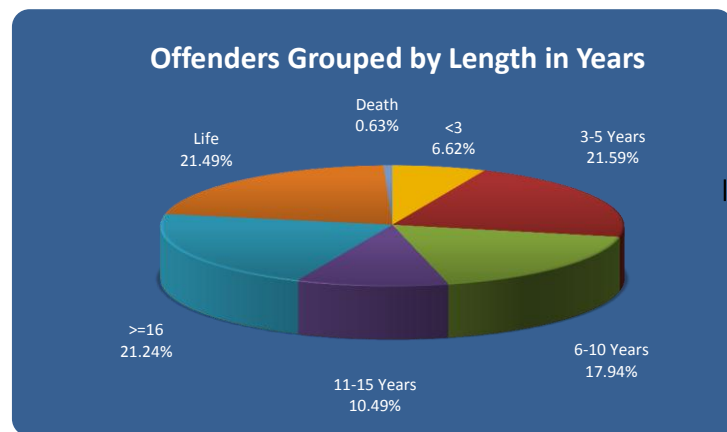
Year	2012				2013				2014			
Quarter	Q1	Q2	Q3	Q4	Q1	Q2	Q3	Q4	Q1	Q2	Q3	Q4
Change	2	15	30	28	44	-34	26	-22	23	26		
% Change	0.21%	1.58%	3.10%	2.81%	4.29%	-3.18%	2.50%	-2.07%	2.21%	2.44%		





## Long-Term Sentence Structures

Sentence Length	Total	%
1 Year	124	0.95%
1-2 Years	740	5.67%
3-5 Years	2,817	21.58%
6-10 Years	2,342	17.94%
11-15 Years	1,370	10.49%
16-20 Years	1,117	8.56%
>=21 Years	1,656	12.69%
Life W/Parole	2,267	17.37%
Life W/O Parole	539	4.13%
Death	82	0.63%
Total	13,054	100.00%



## Felony Analysis

Total Population by Felony Category	A	B	C	D	E	Unknown	Total
Male	3,408	7,413	733	277	107	25	11,963
	28.48%	61.97%	6.13%	2.32%	0.89%	0.21%	100.00%
Female	141	724	128	59	36	3	1091
	12.92%	66.36%	11.73%	5.41%	3.30%	0.27%	100.00%
Total	3,549	8,137	861	336	143	28	13,054
	27.18%	62.34%	6.60%	2.57%	1.10%	0.21%	100.00%

## Paroles and Offense Groups<sup>a</sup>

Parole Population	Sex	Violence	Drug	Property	DUI	Other	Total
Male	500	717	342	757	87	205	2,608
	19.17%	27.49%	13.11%	29.03%	3.34%	7.86%	100.00%
Female	9	77	95	236	14	41	472
	1.91%	16.31%	20.13%	50.00%	2.97%	8.69%	100.00%
Total	509	794	437	993	101	246	3,080
	16.53%	25.78%	14.19%	32.24%	3.28%	7.99%	100.00%

<sup>a</sup> Source: Nevada Department of Public Safety, Division of Parole and Probation, as of December 31st, 2013.

## Walkaways and Escapes During Fiscal Year 2014

Number of Escapes													
Location	July	Aug	Sept	Oct	Nov	Dec	Jan	Feb	Mar	Apr	May	June	Total
NSP													0
HDSP													0
Escaped													0
Recapture													0
NNCC													0
Escape													0
Recapture													0
Recapture													0
WCCC													0
SNCC													0
SDCC													0
ESP													0
LCC													0
FMWCC													0
Total Escaped	0	0	0	0	0	0	0	0	0	0	0	0	0
Total Captured													0
Escape Balance	0	0	0	0	0	0	0	0	0	0	0	0	0

Number of Walkaways													
Location	July	Aug	Sept	Oct	Nov	Dec	Jan	Feb	Mar	Apr	May	June	Total
NNRC	0	0	0	0	0	0	0	0	0	0	0	0	0
Walked													0
Captured													0
CGTH	0	0	-3	0	1	1	0	0	0	0	0	0	-1
Walked	3	2	1	5	2	2							15
Captured	3	2	4	5	1	1							16
SCC	0	0	0	0	0	0	0	0	0	0	0	0	0
Walked													0
Captured													0
PCC	0	0	0	0	0	0	0	0	0	0	0	0	0
Walked													0
Captured													0
TLVCC	0	0	0	0	0	0	0	0	0	0	0	0	0
Walked					1								1
Captured					1								1
ECC	0	0	0	0	0	0	0	0	0	0	0	0	0
Walked				2									2
Captured				2									2
JCC	0	0	0	0	0	0	0	0	0	0	0	0	0
Walked							0	0					0
Captured													0
PCC	0	0	0	0	0	0	0	0	0	0	0	0	0
Walked													0
Captured													0
CCC	0	0	0	0	0	0	0	0	0	0	0	0	0
Walked													0
Captured													0
TCC	0	0	0	0	0	0	0	0	0	0	0	0	0
Walked													0
Captured													0
HCC	0	0	0	0	0	0	0	0	0	0	0	0	0
Walked													0
Captured													0
TRANS	0	0	0	0	0	0	0	0	0	0	0	0	0
Walked													0
Captured													0
JAIL	0	0	0	0	0	0	0	0	0	0	0	0	0
Walked													0
Captured													0
HOSP	0	0	0	0	0	0	0	0	0	0	0	0	0
Walked													0
Captured													0
RES CON	0	0	0	0	0	0	0	0	0	0	0	0	0
Walked													0
Captured													0
OSC	0	0	0	0	0	0	0	0	0	0	0	0	0
Walked													0
Captured													0
Total Walked	3	2	1	7	3	2	0	0	0	0	0	0	18
Total Captured	3	2	4	7	2	1	0	0	0	0	0	0	19
Walkaway Balance	0	0	-3	0	1	1	0	0	0	0	0	0	-1

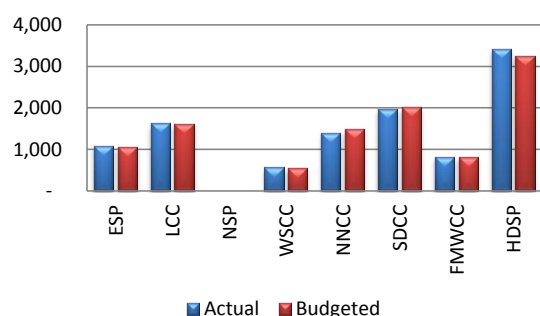
## Escape to Population Statistics for Fiscal Year 2014

Month	Population	Escapes	Walkaways	Total	Rate per 10,000 Inmates
July	12,713	0	3	3	2.4
August	12,790	0	2	2	1.6
September	12,779	0	1	1	0.8
October	12,844	0	7	7	5.5
November	12,850	0	3	3	2.3
December	12,786	0	2	2	1.6
January				0	
February				0	
March				0	
April				0	
May				0	
June				0	
<b>Average</b>	12,794	0.00	3.00	1.50	1.17

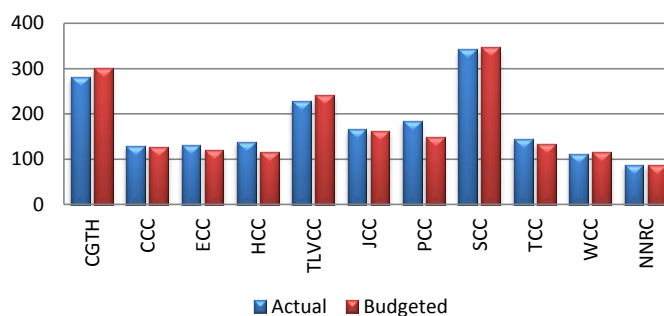
## Quarterly Population Averages

Fenced Institutions	Abbreviation	Actual <sup>a</sup>	Budgeted <sup>b</sup>	% Actual to Budgeted
Ely State Prison	ESP	1,078	1,058	101.92%
Lovelock Correctional Center	LCC	1,619	1,615	100.27%
Nevada State Prison	NSP	-	-	-
Warm Spring Correctional Center	WSCC	557	546	102.01%
Northern Nevada Correctional Center	NNCC	1,392	1,485	93.76%
Southern Desert Correctional Center	SDCC	1,964	2,018	97.32%
Florence McClure Correctional Center	FMWCC	812	808	100.54%
High Desert State Prison	HDSP	3,418	3,238	105.56%
Total		10,841	10,768	100.68%

### Fenced Institutions



### Camps



Facilities	Abbreviation	Actual <sup>a</sup>	Budgeted <sup>b</sup>	% Actual to Budgeted
Casa Grande Traditional Center	CGTH	281	301	93.36%
Carlin Correctional Center	CCC	128	127	101.05%
Ely Correctional Center	ECC	130	120	108.06%
Humboldt Correctional Center	HCC	138	116	118.97%
Three Lakes Valley Correctional Center	TLVCC	229	241	95.02%
Jean Correctional Center	JCC	165	162	102.06%
Pioche Correctional Center	PCC	184	149	123.27%
Stewart Correctional Center	SCC	344	346	99.33%
Tonopah Correctional Center	TCC	144	134	107.22%
Wells Correctional Center	WCC	112	116	96.27%
Northern Nevada Restitution Center	NNRC	88	87	100.77%
Total		1,942	1,899	102.25%

<sup>a</sup> Reflects actual average population during the reporting quarter.

<sup>b</sup> Reflects the budgeted monthly population for the current fiscal year.

## Administrative Indicators

---

Personnel Statistics	Authorized FETs	Filled
Security	1,803.00	1,748.00
Non-security	947.68	873.13
Total	2,746.68	2,621.13

Operating Indicators	12/31/2013	9/30/2013
Base Structure	10,712	10,718
Operating Capacity	11,479	11,444
Emergency Threshold	13,167	12,836
Emergency and Above	13,977	13,646
In-House Population	11,729	12,779
Total Population	13,054	13,045
Parole Population	3,080	3,089
Incarceration Rate <sup>a</sup>	469.80	466.63
Yearly Operating Cost	\$19,907.00	\$19,907.00

---

Incarceration Rate Estimate	AZ <sup>b c</sup>	CA <sup>d f</sup>	NV <sup>g h</sup>
State Population Estimate	6,581,054	38,041,430	2,775,216
Prison Population	41,689	135,140	13,038
Incarceration Rate	633.47	355.24	469.80

## Monthly Population Statistics

Projected vs. Actual Male Population								
Month Year	Total <sup>a</sup>		In-House <sup>b</sup>		Admissions <sup>c</sup>		Releases <sup>d</sup>	
	Frcst <sup>e</sup>	Actual <sup>f</sup>	Frcst <sup>e</sup>	Actual <sup>f</sup>	Frcst <sup>e</sup>	Actual <sup>f</sup>	Frcst <sup>e</sup>	Actual <sup>f</sup>
07/13	11,862	11,906	11,636	11,678	444	415	395	396
08/13	11,872	11,985	11,644	11,750	449	434	411	355
09/13	11,881	11,980	11,649	11,744	408	351	427	356
10/13	11,903	12,036	11,646	11,810	432	438	397	382
11/13	11,911	12,006	11,653	11,782	409	363	410	393
12/13	11,914	11,963	11,656	11,729	403	400	397	443
01/14	11,911		11,653					
02/14	11,916		11,658					
03/14	11,922		11,664					
04/14	11,917		11,659					
05/14	11,924		11,666					
06/14	11,921		11,663					
07/14	11,925		11,669					
08/14	11,927		11,671					
09/14	11,930		11,674					
10/14	11,939		11,683					
11/14	11,934		11,678					
12/14	11,943		11,687					
01/15	11,938		11,682					
02/15	11,935		11,679					
03/15	11,942		11,686					
04/15	11,947		11,691					
05/15	11,946		11,690					
06/15	11,950		11,693					
<b>ACT AVG-TO-DATE</b>		<b>11,979</b>	<b>11,668</b>	<b>11,749</b>	<b>424.17</b>	<b>400.17</b>	<b>406</b>	<b>387.50</b>
<b>RMSE TO-DATE<sup>g</sup></b>		<b>32.0</b>		<b>30.3</b>				
<b>% RMSE/AVG TO-DATE<sup>h</sup></b>		<b>0.27%</b>		<b>0.26%</b>				

<sup>a</sup> The prison population inclusive of residential confinement inmates, escapees, prisoners serving a sentence out of state, or intermediate sanction.

<sup>b</sup> The in-house prison population consists of all inmates housed at an NDOC correctional location, and prisoners temporarily housed at a jail or admitted to a hospital.

<sup>c</sup> Offenders admitted to the NDOC during the current biennium.

<sup>d</sup> Offenders released to the NDOC during the current biennium.

<sup>e</sup> Prisoner population forecasts derived by the JFA Institute/JFA Associates and approved by the Legislature for the current biennium.

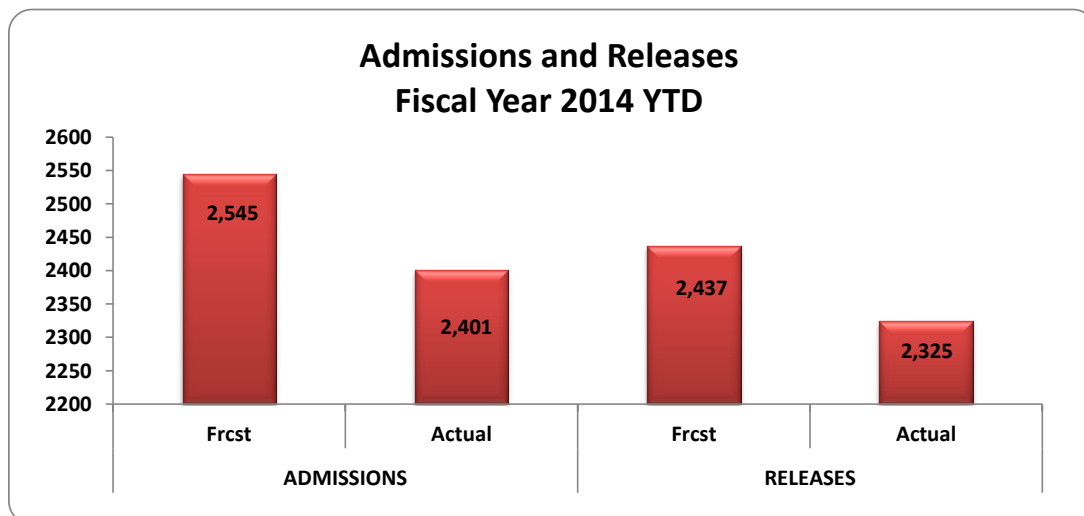
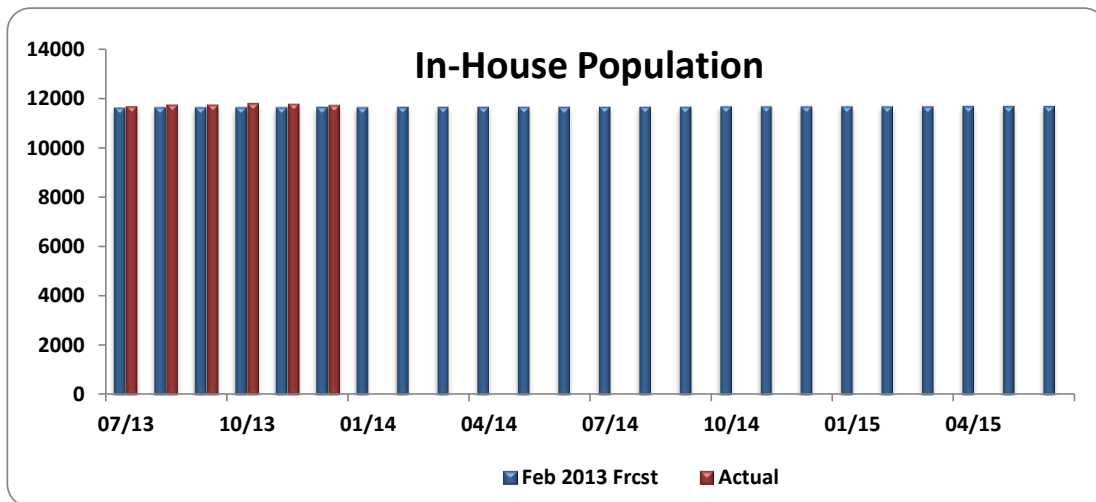
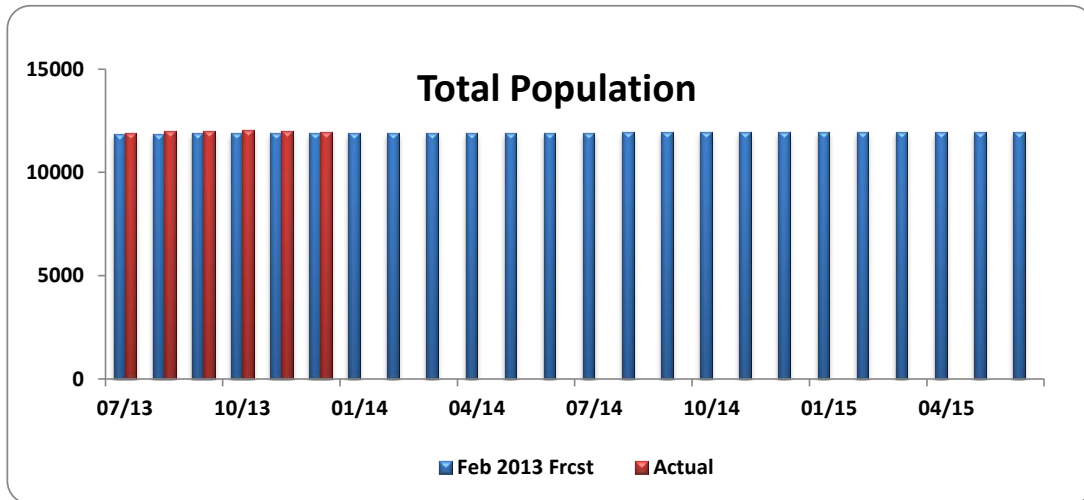
<sup>f</sup> The actual prison population of the NDOC exclusive of intermediate sanction offenders temporarily housed at CGTH. These offenders were not factored into the forecasts.

<sup>g</sup> The Root Mean Squared Error is the squared root of the average of the squared differences between the actual and the forecast observations.

<sup>h</sup> The Root Mean Squared Error as percentage of the actual average-to-date is a measure of prediction.

<sup>i</sup> The cumulative forecast error divided by the mean actual deviations.

## Male Population Comparison 2013 - 2015 Biennium



**Monthly Population Statistics  
2013 - 2015 Biennium**

Projected vs. Actual Female Population								
Month Year	Total <sup>a</sup>		In-House <sup>b</sup>		Admissions <sup>c</sup>		Releases <sup>d</sup>	
	Frcst <sup>e</sup>	Actual <sup>f</sup>	Frcst <sup>e</sup>	Actual <sup>f</sup>	Frcst <sup>e</sup>	Actual <sup>f</sup>	Frcst <sup>e</sup>	Actual <sup>f</sup>
07/13	1,049	1,067	1,006	1,035	65	83	66	58
08/13	1,052	1,070	1,008	1,040	65	64	68	61
09/13	1,056	1,065	1,012	1,035	64	63	65	68
10/13	1,053	1,064	1,009	1,034	65	55	53	56
11/13	1,052	1,097	1,008	1,068	65	66	62	33
12/13	1,063	1,091	1,019	1,057	65	65	56	71
01/14	1,064		1,020					
02/14	1,059		1,015					
03/14	1,058		1,014					
04/14	1,057		1,013					
05/14	1,061		1,017					
06/14	1,063		1,019					
07/14	1,066		1,023					
08/14	1,068		1,025					
09/14	1,071		1,028					
10/14	1,071		1,028					
11/14	1,075		1,032					
12/14	1,076		1,033					
01/15	1,073		1,030					
02/15	1,077		1,034					
03/15	1,079		1,036					
04/15	1,075		1,032					
05/15	1,075		1,032					
06/15	1,074		1,031					
<b>ACT AVG-TO-DATE</b>	<b>1,076</b>		<b>1,045</b>		<b>64.8</b>	<b>66.0</b>	<b>61.7</b>	<b>57.8</b>
<b>RMSE TO-DATE<sup>g</sup></b>	<b>5.51</b>		<b>9.99</b>					
<b>% RMSE/AVG TO-DATE<sup>h</sup></b>	<b>0.51%</b>		<b>0.96%</b>					
<b>CUMULATIVE TO-DATE</b>					<b>389</b>	<b>396</b>	<b>370</b>	<b>347</b>

<sup>a</sup> The prison population inclusive of residential confinement inmates, escapees, prisoners serving a sentence out of state, and intermediate sanction offenders.

<sup>b</sup> The in-house prison population consists of all inmates housed at an NDOC correctional location, and prisoners temporarily housed at a jail or admitted to a hospital, exclusive of intermediate sanction offenders.

<sup>c</sup> Offenders admitted to the NDOC during the current biennium.

<sup>d</sup> Offenders released to the NDOC during the current biennium.

<sup>e</sup> Prisoner population forecasts derived by the JFA Institute/JFA Associates.

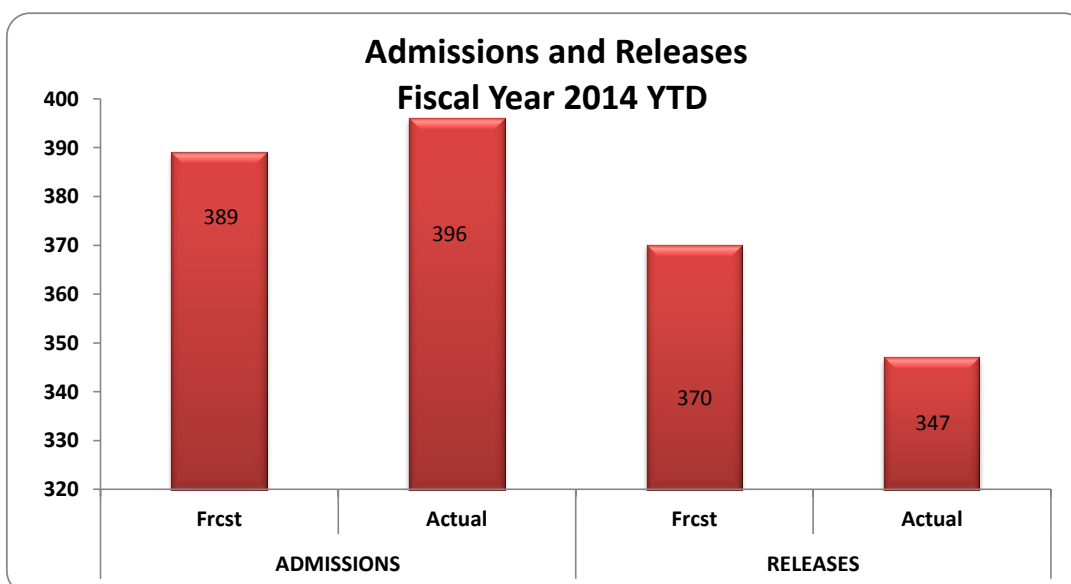
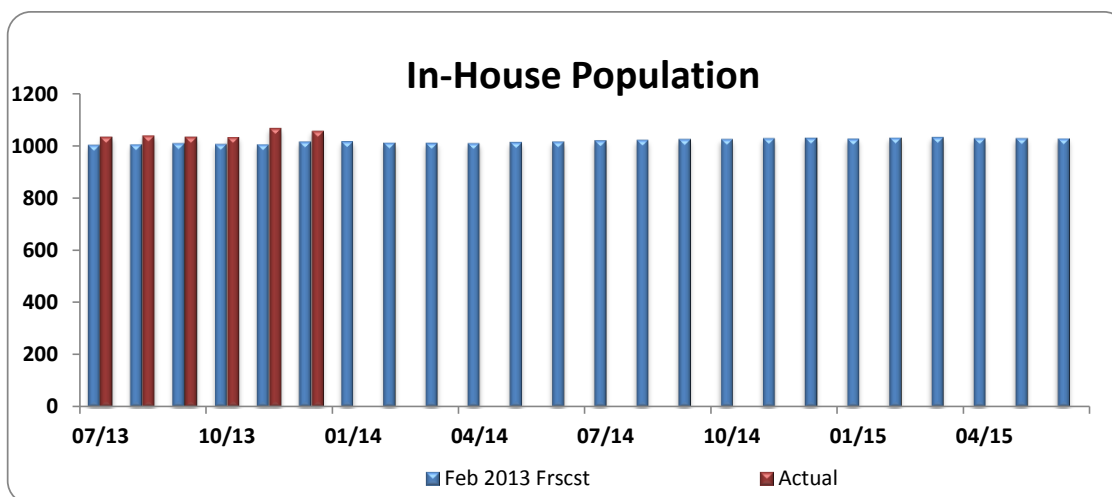
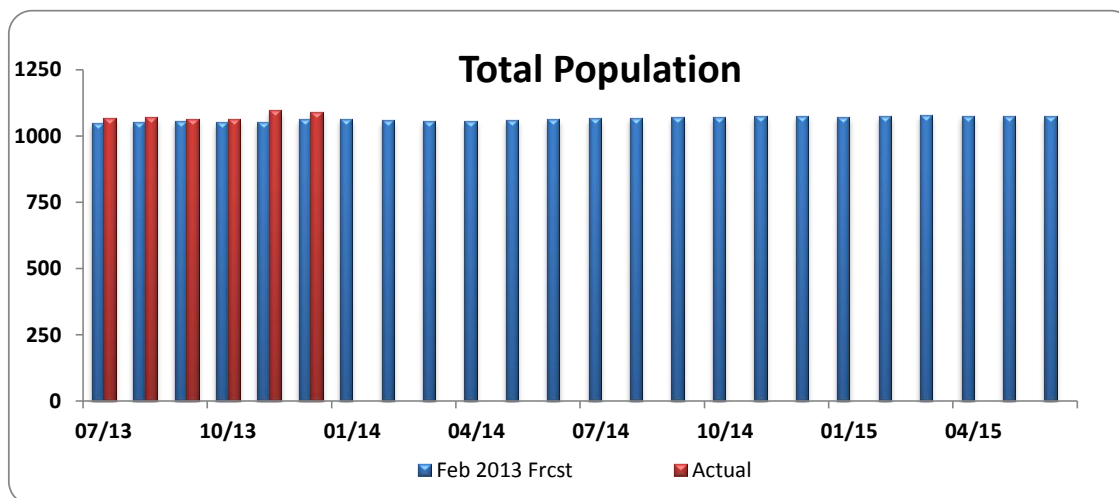
<sup>f</sup> The actual prison population of the NDOC exclusive of intermediate sanction offenders temporarily housed at CGTH. These offenders were not factored into the forecasts.

<sup>g</sup> The Root Mean Squared Error is the squared root of the average of the squared differences between the actual and the forecast observations.

<sup>h</sup> The Root Mean Squared Error as percentage of the actual average to date is a measure of prediction.



## Female Population Comparison 2013 - 2015 Biennium



**Monthly Program Completions  
Per NRS 209.391  
Calendar Year 2013**

Programs and Credit Hours													
Correctional Classes <sup>a</sup>	January	February	March	April	May	June	July	August	September	October	November	December	Grand Total <sup>b</sup>
ABCs of Parenting / Nurturing Families/ Parent/Teen	0	1	0	0	0	0	0	0	4	0	1	0	6
Anger Management	32	53	81	17	30	55	37	112	86	79	77	36	695
Cage Your Rage	24	33	8	51	19	30	40	27	24	60	23	25	364
Commitment to Change Core Program I (15 each)	106	51	74	202	54	22	30	86	159	43	31	69	927
Commitment to Change Core Program II (15 each)	53	57	86	97	117	74	82	80	45	61	24	35	811
Commitment to Change Core Program III (15 each)	10	65	8	80	53	21	1	19	33	37	15	103	445
Communications	0	0	7	6	17	0	0	18	0	19	22	22	111
Conflict Resolution	0	0	0	0	18	0	0	22	38	0	17	17	112
Domestic Violence	45	22	9	10	7	3	17	10	11	201	43	15	393
Emotions Mgt/ SOS Help for Emotions	22	42	7	58	45	69	43	45	49	9	38	60	487
Family	0	0	0	16	0	0	0	0	20	11	12	0	59
Family Reunification (Re-Entry)	0	0	0	0	0	0	0	6	0	6	0	0	12
Gang Awareness	0	12	0	0	0	0	0	0	0	0	10	0	22
Health-Related Recovery	0	0	0	0	0	0	0	0	0	0	0	0	0
Houses of Healing (Re-Entry)	0	13	1	16	32	68	35	16	25	6	23	15	250
Inside/Outside Dads	0	0	0	0	0	0	1	0	9	35	1	0	46
New Beginnings	0	0	54	31	18	79	63	21	56	20	0	46	388
One World	19	7	7	28	1	0	0	0	0	0	0	71	133
Parenting	0	8	23	5	0	0	0	0	0	0	4	4	44
Peaceful Solutions	12	4	4	0	8	0	3	0	0	0	0	0	31
Relationship Skills	0	0	30	26	39	36	16	12	13	1	2	11	186
S.M.A.R.T. Choices (Re-Entry) (15)	0	9	0	8	0	0	0	0	0	17	16	9	59
Seeking Safety I (15 each)	10	0	0	0	0	160	170	0	0	6	22	13	381
Seeking Safety II (15 each)	0	0	0	10	0	0	0	0	0	15	0	0	25
Senior Structured Living "True Grit" Program (30)	0	0	0	0	0	160	0	0	0	0	0	149	309
STOP Sex Offender Core Program I (30 each)	21	15	24	26	13	0	6	0	0	14	25	15	159
STOP Sex Offender Core Program II (30 each)	0	0	15	0	26	0	0	7	0	15	0	8	71
STOP Sex Offender Core Program III (30 each)	0	0	7	0	0	33	33	12	0	0	0	4	89
STOP Sex Offender Core Program IV (30 each)	15	0	22	0	0	0	0	0	0	15	9	6	67
Stress/Anxiety Management	0	0	0	0	3	0	0	0	0	0	0	20	23
Structured Living: Basic Training (30)	0	23	0	20	0	9	3	3	0	0	0	0	58
Surviving Sexual Assault /SOAR	0	0	0	0	0	15	0	0	5	0	0	0	20
The Path to Success (Re-Entry)	0	21	11	13	21	0	31	0	0	21	3	3	124
Thinking for a Change	0	12	0	0	0	19	30	5	0	19	0	0	85
Unbearable Stress	0	0	0	0	0	0	0	0	0	0	5	39	44
Victim Awareness/ Empathy	50	35	58	22	113	34	58	58	93	60	35	80	696
Women's Health	25	18	19	15	15	16	0	42	9	19	14	14	206
Correctional Total	444	501	555	757	649	903	699	601	679	789	472	889	7,938
Educational	January	February	March	April	May	June	July	August	September	October	November	December	Grand Total <sup>a</sup>
AA First or Second (90) & (120)	0	0	0	0	0	0	0	0	0	0	0	0	0
College Certificate (0) & (60)	1	1	0	0	0	1	0	0	0	0	0	0	3
GED (30) & (60)	49	38	62	20	75	5	12	13	14	59	33	80	460
High School Diploma (60) & (90)	27	16	50	59	116	21	13	14	22	17	14	47	416
MAMS (0) & (90)/PhD	0	0	0	5	0	0	0	0	0	0	0	0	5
Educational Total	77	55	112	84	191	27	25	27	36	76	47	127	884
Job Skills	January	February	March	April	May	June	July	August	September	October	November	December	Grand Total <sup>a</sup>
Braille I (30 each)	1	0	0	3	5	0	0	4	0	1	2	0	16
Braille II (30 each)	0	0	0	0	0	0	0	0	0	0	0	0	0
Braille III (30 each)	0	0	0	0	3	0	0	0	0	2	9	0	14
Commercial Drivers License	0	0	0	0	0	0	0	1	0	0	0	0	1
Financial Literacy	0	7	18	6	8	0	0	0	0	11	4	4	58
Forklift Operating Training	0	10	0	0	1	0	9	0	1	1	1	1	24
Job Readiness Skills - Building Your Future	52	58	66	52	26	22	70	32	47	55	25	25	530
Job Survival Skills	0	0	12	7	11	9	10	10	8	8	8	8	91
OSHA 10 - Construction Safety and Health Outreach	0	0	1	1	1	4	48	2	1	18	41	41	158
Photovoltaic	0	0	0	0	0	0	0	0	0	0	0	10	10
ServeSafe	0	7	6	11	0	18	9	38	7	21	39	8	164
Job Skills Total	53	82	103	80	55	53	146	87	64	117	129	97	1066
Nevada Department of Forestry	January	February	March	April	May	June	July	August	September	October	November	December	Grand Total <sup>a</sup>
Firefighting, Basic	115	273	121	122	96	85	68	82	97	112	42	30	1,243
Helitack Helicopter Firefighting	0	0	0	0	0	0	0	0	0	0	0	4	4
NDF Total	115	273	121	122	96	85	68	82	97	112	42	34	1,247
Substance Abuse	January	February	March	April	May	June	July	August	September	October	November	December	Grand Total <sup>a</sup>
Aftercare from Therapeutic Community I (60 each)	20	1	4	3	4	4	6	0	2	0	0	0	44
Aftercare from Therapeutic Community II (60 each)	11	0	0	0	0	0	0	0	0	5	0	0	16
ANCHOR Program I (60 each)	0	0	0	0	0	0	0	0	0	0	0	0	0
ARCH Therapeutic Community I (60 each)	0	0	0	5	2	1	2	13	15	0	4	4	46
ARCH Therapeutic Community II (60 each)	0	1	5	0	5	2	4	0	5	3	0	0	25
ARCH Therapeutic Community III (60 each)	0	0	4	7	4	4	1	3	3	0	0	0	26
OASIS I (60 each)	18	12	4	14	15	9	9	4	5	0	0	0	90
OASIS II (60 each)	0	0	9	7	1	3	6	7	0	4	2	13	52
OASIS III (60 each)	0	1	5	2	0	6	6	0	0	1	7	6	34
Substance Abuse Total	49	15	31	38	31	29	34	27	30	13	13	23	333
Vocational	January	February	March	April	May	June	July	August	September	October	November	December	Grand Total <sup>a</sup>
Advanced Computers	1	1	1	2	1	1	10	0	2	1	1	1	22
Air Conditioning and Heating	0	0	0	6	0	0	0	0	0	0	0	0	6
Auto Mechanics/Auto Shop	3	0	4	6	0	8	6	5	6	6	0	0	44
Automotive Technology	9	9	12	6	8	20	6	5	12	9	0	0	96
Business	18	0	0	0	38	0	0	0	0	2	0	0	58
Collision Repair	0	0	0	0	0	0	0	0	0	0	0	3	3
Computers	2	0	8	6	32	1	0	4	13	5	4	1	76
Construction	0	0	0	5	0	2	0	0	0	0	0	0	7
Culinary	0	0	0	8	14	4	0	2	2	0	6	4	40
Dry Cleaning	0	5	0	0	0	0	4	4	0	30	0	0	43
Entrepreneurship	0	0	0	0	9	0	0	0	0	4	0	0	13
Green Technology	0	0	4	5	1	0	0	0	0	1	24	0	35
Plant Science Horticulture	0	3	0	4	1	0	3	3	0	0	0	0	14
Vocational Total	33	18	29	48	104	36	29	23	35	58	35	9	457
Grand Total	January	February	March	April	May	June	July	August	September	October	November	December	Grand Total <sup>a</sup>
Grand Total	771	944	951	1,129	1,126	1,133	1,001	847	941	1,165	738	1,179	11,925

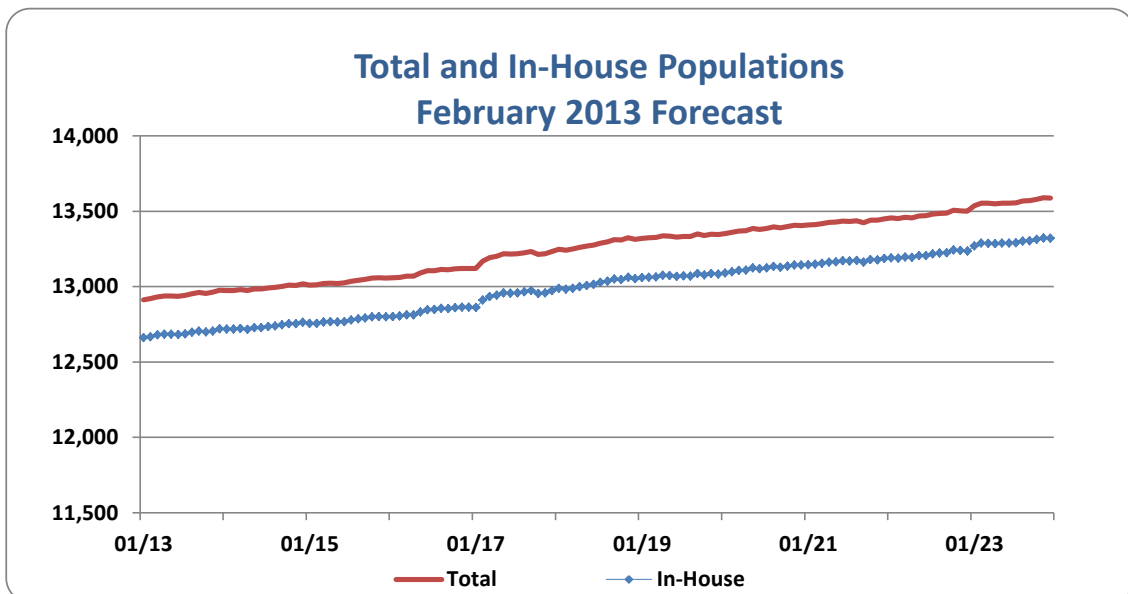
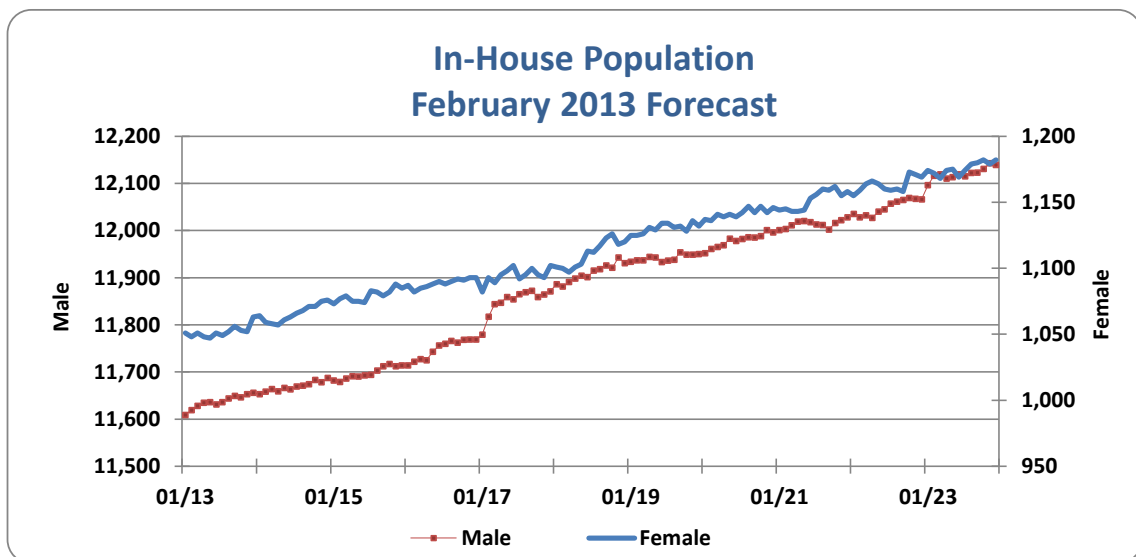
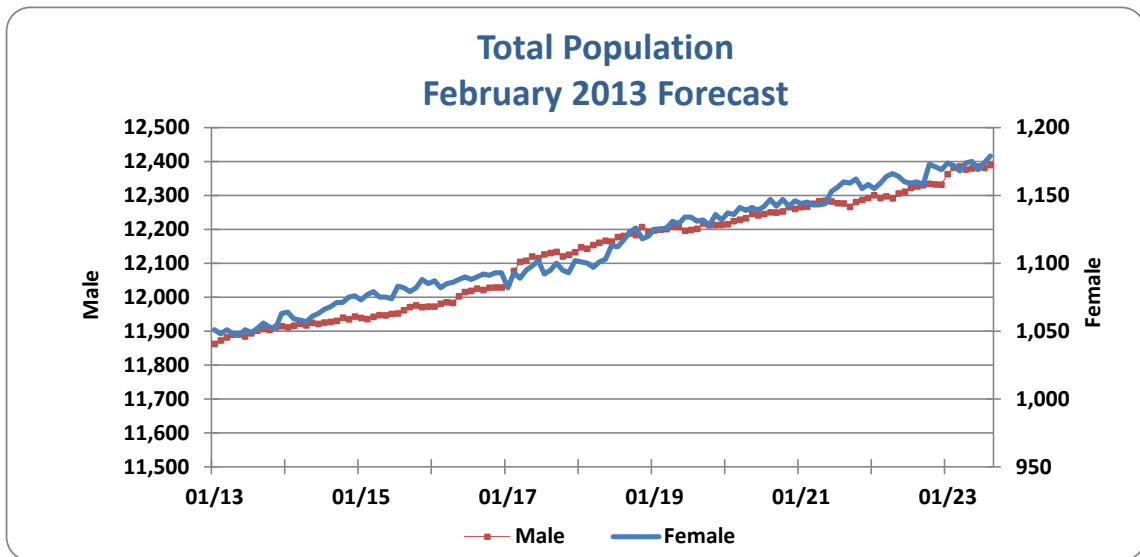
<sup>a</sup> Programs offerings began after the beginning of the calendar year.

<sup>b</sup> Class monthly statistics as of August, 2014.

Monthly Program Participation  
NRS 209.391  
Calendar Year 2013

Programs and Credit Hours														
Correctional	January	February	March	April	May	June	July	August	September	October	November	December	Grand Total <sup>a</sup>	
ABCs of Parenting / Nurturing Families/ Parent/Teen	0	15	0	0	0	0	0	0	0	0	1		16	
Anger Management	96	124	106	74	30	65	122	163	164	254	153	166	1,517	
Cage Your Rage	72	29	37	105	17	19	35	47	31	91	67	38	588	
Commitment to Change Core Program I (15 each)	145	112	186	257	81	94	168	221	231	188	45	99	1,827	
Commitment to Change Core Program II (15 each)	105	119	93	128	152	94	142	87	64	111	37	73	1,205	
Commitment to Change Core Program III (15 each)	22	108	0	113	84	0	28	38	54	84	90	93	714	
Communications	15	0	7	17	0	14	48	0	21	43			165	
Conflict Resolution	0	0	0	22	0	0	24	0	45	17			108	
Domestic Violence	66	51	3	0	11	12	16	17	24	201	49	30	480	
Emotions Management/ SOS Help for Emotions	6	87	7	121	52	81	59	49	78	37	42	36	655	
Family	0	0	0	16	0	0	0	0	20	23	12	11	82	
Family Reunification (Re-Entry)	0	0	0	0	0	0	0	0	7	7			14	
Gang Awareness	15	15	0	0	0	0	0	0	0	16	16		62	
Health-Related Recovery	0	0	0	0	0	0	0	0	15				15	
Houses of Healing (Re-Entry)	36	28	25	62	51	61	31	18	41	7	14	61	435	
Inside/Outside Dads	0	0	0	0	20	2	2	1	43	47	1	8	124	
New Beginnings	114	109	90	156	67	71	98	108	53	45	47	41	999	
One World	39	12	1	21	0	0	0	0	0				73	
Parenting	0	6	6	0	0	0	0	0	15	21		12	60	
Peaceful Solutions	13	8	8	0	8	3	3	0	0			16	59	
Relationship Skills	0	67	40	80	52	49	19	28	32	20	16	73	476	
S.M.A.R.T. Choices (Re-Entry) (15)	11	0	10	0	0	0	0	23	27	43	36	31	181	
Seeking Safety I (15 each)	200	0	7	0	5	160	0	0	29	-			401	
Seeking Safety II (15 each)	0	15	5	10	0	0	170	10	0	27			237	
Senior Structured Living "True Grit" Program (30)	188	20	20	10	5	160		10	15			20	448	
STOP Sex Offender Core Program I (30 each)	86	100	49	18	58	13	29	23	32	23	32	6	469	
STOP Sex Offender Core Program II (30 each)	27	4	20	32	20	7	13	7	18	10	19	18	195	
STOP Sex Offender Core Program III (30 each)		7	38	35	26	34	2	57	5	15	5	8	232	
STOP Sex Offender Core Program IV (30 each)	21	21	-					9	7	19	18	7	102	
Stress/Anxiety Management			4	4	-						22		30	
Structured Living: Basic Training (30)	47	23	7	7	8	6	10	10					118	
Surviving Sexual Assault /SOAR						9			-				9	
The Path to Success (Re-Entry)	12	3	14	20	11	12	19	20	36	37	31	31	246	
Thinking for a Change		27				19	-	-	57	22			125	
Unbearable Stress		57	44					5		5	5	45	161	
Victim Awareness/ Empathy	58	139	98	92	134	45	84	129	138	93	69	66	1,145	
Women's Health	71	35	43	43	36	38	36	36	36	32	29	29	428	
Correctional Total	1,465	1,341	968	1,443	928	1,068	1,122	1,116	1,338	1,538	856	1,018	14,201	
Educational	January	February	March	April	May	June	July	August	September	October	November	December	Grand Total	
AA First or Second (90) & (120)	13		4	11	3				1	16	1	1	50	
College Certificate (0) & (60)	9	1		9		1	2	2					24	
GED (30) & (60)	402	408	324	396	413	181	29	382	411	482	359	513	4,300	
High School Diploma (60) & (90)	957	527	526	416	567	354	42	600	550	548	552	638	6,277	
MA/MS (0) & (90)/PhD				122			31						153	
Educational Total	1,381	936	854	954	983	536	104	984	962	1,046	912	1,152	10,804	
Job Skills	January	February	March	April	May	June	July	August	September	October	November	December	Grand Total	
Braille I (30 each)	25	25	25	25	25			21	21	21	21	21	230	
Braille II (30 each)	25	25	25	25	25			21	21	21	21	21	230	
Braille III (30 each)	25	25	25	25	25			21	21	21	21	21	230	
Commercial Drivers License		15	15	15	15	1	1	1					63	
Financial Literacy		14	12	4	8				4	16	1	1	60	
Forklift Operating Training	3				1				1	1	1	1	8	
Job Readiness Skills - Building Your Future	108	50	81	43	47	56	73	63	47	71	45	69	753	
Job Survival Skills		10	15	13	13	16	10	10	44	8	8	8	155	
OSHA 10 - Construction Safety and Health Outreach			1	1	1	4	48	2	1	1	1	1	78	
ServeSafe	15	19	26	11	24	33	9	51	18	23	48	6	283	
Job Skills Total	201	183	225	162	184	110	141	190	178	200	167	149	2,090	
Nevada Department of Forestry (NDF)	January	February	March	April	May	June	July	August	September	October	November	December	Grand Total	
Firefighting, Basic	131	319	169	145	146	150	86	116	117	142	53	37	1,611	
Helitack Helicopter Firefighting	23									-		14	37	
NDF Total	154	319	169	145	146	150	86	116	117	142	53	51	1,648	
Substance Abuse	January	February	March	April	May	June	July	August	September	October	November	December	Grand Total	
Addiction Prevention Education Core Program												40	40	
Aftercare from Therapeutic Community I (60 each)	5		9	9	4	10	7	3	3	1			51	
Aftercare from Therapeutic Community II (60 each)	13												13	
ANCHOR Program I (60 each)	11												11	
ARCH Therapeutic Community I (60 each)		5	6		-	10	7	2	5	12	4	4	55	
ARCH Therapeutic Community II (60 each)		2		5	2	1	2	13	15	3	4	4	51	
ARCH Therapeutic Community III (60 each)		1	5		5	2	4		5				22	
OASIS I (60 each)		12	7	4	-	18	5	10	16	5	3	1	81	
OASIS II (60 each)			4	14	15	9	9	4	5	-		1	61	
OASIS III (60 each)			9	7	1	3	6	7		4	2	2	41	
Substance Abuse Programs Total	29	20	40	39	27	53	40	39	49	25	13	52	426	
Vocational	January	February	March	April	May	June	July	August	September	October	November	December	Grand Total	
Advanced Computers		3	3	10	11			3	3	3	1	-	37	
Air Conditioning and Heating	1			14	6	6		16	22	8	7	4	84	
Auto Mechanics/Auto Shop	5		1	1	1	1			4	-		-	13	
Automotive Technology	6	11	8	8	27	31	6	20	23	13	5	7	165	
Business	42	35	35	45	56			76	76	85	65	67	582	
Computers	28	43	44	31	40	16		58	63	-		-	323	
Construction	5	3		2	35	35		14	16	114	63	73	360	
Culinary	7	3		13	16	15		12	18	6	3	5	98	
Dry Cleaning	5	5	5				6	6	9	9	5	6	47	
Entrepreneurship	25	23	23	18	29			76	76	85		67	422	
Green Technology	5	3		2	35	35		14	16	6	68	5	189	
Plant Science Horticulture	52	36	5	31	5	35	4	4		-			172	
Vocational Programs Total	181	165	124	175	261	174	16	299	317	329	217	234	2,492	
Grand Total	3,411	2,964	2,380	2,918	2,529	2,091	1,509	2,744	2,961	3,280	2,218	2,656	31,661	

<sup>a</sup> Class monthly statistics as of August, 2014.



Year	NV/U.S. Rate <sup>b</sup>	Population <sup>c</sup>	Violent Crime	Murder and Non negligent Manslaughter	Forcible Rape	Robbery	Aggravated Assault	Property Crime	Burglary	Larceny-Theft	Motor Vehicle Theft
2006	NEVADA	2,495,529	18,508	224	1,079	7,027	10,178	102,036	24,820	50,255	26,961
	Rate <sub>(3)</sub>		741.6	43.2	43.2	281.6	4,088.8	994.6	2,013.8	2,013.8	1,080.4
	U.S.	299,398,484	1,418,043	17,030	92,757	447,403	860,853	9,983,568	2,183,746	6,607,013	1,192,809
2007	NEVADA	2,565,382	19,257	192	1,096	6,932	11,037	96,916	24,840	49,745	22,331
	Rate <sub>(3)</sub>		750.6	7.5	42.7	270.2	430.2	3,777.8	968.3	1,939.1	870.5
	U.S.	301,621,157	1,408,337	16,929	90,427	445,125	855,856	9,843,481	2,179,140	6,568,572	1,095,769
2008	NEVADA	2,600,167	18,837	163	1,102	6,473	11,099	89,640	24,156	49,581	15,903
	Rate <sub>(3)</sub>		724.5	6.3	42.4	248.9	426.9	3,447.50	929.0	1,906.8	611.6
	U.S.	304,059,724	1,382,012	16,272	89,000	441,855	834,885	9,767,915	2,222,196	6,588,873	956,846
2009	NEVADA	2,643,085	18,559	157	1,021	6,021	11,360	80,763	21,994	46,390	12,379
	Rate <sub>(3)</sub>		702.2	5.9	38.6	227.8	429.8	3,055.6	832.1	1,755.1	468.4
	U.S.	307,006,550	1,318,398	15,241	88,097	408,217	806,843	9,320,971	2,199,125	6,327,230	794,616
2010	NEVADA	2,704,283	17,929	158	965	5,298	11,508	75,004.0	22,286	42,533	10,185
	Rate <sub>(3)</sub>		663	5.8	35.7	195.9	425.5	2,773.5	824.1	1,573	376.6
	U.S.	308,745,538	1,246,248	14,748	84,767	367,832	778,901	9,082,887	2,159,878	6,185,867	737,142
2011	NEVADA	2,720,028	15,452	139	913	4,308	10,092	70,075	20,342	40,156	9,577
	Rate <sub>(3)</sub>		568.1	5.1	33.6	158.4	371	2,576.3	747.9	1,476.3	352.1
	U.S.	311,591,917	1,203,564	14,612	83,425	354,396	751,131	9,063,173.0	2,188,005	6,159,795.0	715,373
2012	NEVADA	2,758,931	16,763.00	124	931	4,918	10,790	77,510	22,120	45,372	10,018
	Rate <sub>(3)</sub>		607.6	4.5	33.7	178.3	391.1	2,809.4	801.8	1,644.6	363.1
	U.S.	313,914,040	1,214,462	14,827	84,376	354,520	760,739	8,975,438	2,103,787	6,150,598	721,053
% Change 06 -07	NEVADA	2.80%	1.21%	-16.67%	-1.16%	-4.05%	5.49%	-7.61%	-2.64%	-3.71%	-19.43%
	U.S.	0.7%	-1.41%	-1.75%	-1.20%	-1.20%	-1.29%	-0.95%	-1.31%	-8.81%	
% Change 07 -08	NEVADA	1.4%	-3.5%	-16.0%	-0.7%	-7.9%	-0.8%	-8.7%	-4.1%	-1.7%	-29.7%
	U.S.	0.8%	-2.7%	-3.6%	-2.3%	-1.6%	-3.2%	-1.6%	1.1%	-0.5%	-13.4%
% Change 08-09	NEVADA	1.65%	-3.08%	-6.35%	-8.96%	-8.48%	0.68%	-11.37%	-10.43%	-7.96%	-23.41%
	U.S.	0.97%	-5.52%	-7.41%	-2.05%	-8.47%	-4.30%	-5.49%	-1.98%	-4.90%	-17.76%
% Change 09-10	NEVADA	2.32%	-5.58%	-1.69%	-7.51%	-14.00%	-1.00%	-9.23%	-0.96%	-10.39%	-19.60%
	U.S.	0.57%	-6.01%	-4.00%	-4.18%	-10.45%	-4.00%	-3.10%	-2.33%	-2.79%	-7.73%
% Change 10-11	NEVADA	0.58%	-14.31%	-12.07%	-5.88%	-19.14%	-12.81%	-7.11%	-9.25%	-6.14%	-6.51%
	U.S.	0.92%	-4.29%	-0.92%	-1.58%	-3.65%	-3.57%	-0.22%	1.30%	-0.42%	-2.95%
% Change 11-12	NEVADA	1.43%	6.95%	-11.76%	0.30%	12.56%	5.42%	9.05%	7.21%	11.40%	3.12%
	U.S.	0.75%	0.16%	0.00%	-0.37%	-0.88%	0.33%	-1.70%	-4.43%	-0.75%	-0.13%

Macro Indicators				
Nevada Summary--2012		U.S. Summary -- 2012		
Population	▲ 1.43%	▲ 0.75%	▲ 0.75%	*During 2013, Nevada's population was expected to increase by 1.19% <sup>a</sup> .
Violent Crime	▲ 6.95%	▲ 0.16%	▲ 0.16%	*During the same year, the U.S. population grew only .65% <sup>d</sup> .
Murder & Manslaught.	▼ -11.76%	▲ 0.00%	▲ 0.00%	*All crime rates in Nevada, except for murder and manslaughter, increased.
Rape	▲ 0.30%	▲ -0.37%	▲ -0.37%	*In Nevada, the rape crime rate increased by only .30% and murder and manslaughter decreased by 11.76%.
Robbery	▲ 12.56%	▲ -0.88%	▲ -0.88%	*Six out of nine crime rate categories experienced decreases during CY 2012 in the U.S.
Aggravated Assault	▲ 5.42%	▲ 0.33%	▲ 0.33%	*During Calendar Year 2013: per capita personal income increased in Nevada from \$37,361 to \$38,920 and the unemployment rate decreased from 9.80% to 9.00%.
Property Crime	▲ 9.05%	▲ -1.70%	▲ -1.70%	*The projected number of law enforcement employees declined from 8,122 to 8,027.
Burglary	▲ 7.21%	▲ -4.43%	▲ -4.43%	and the prison population increased by 1.30%.
Larceny	▲ 11.40%	▲ -0.75%	▲ -0.75%	
Motor Vehicle	▲ 3.12%	▲ -0.13%	▲ -0.13%	
Arson	N/A	N/A	N/A	

LABOR FORCE and Income Indicators <sup>d</sup>									
Category	Dec'12	Mar'13	June'13	Sep'13	Dec'13	% Change Dec'12-Mar'13	% Change March'13-June'13	% Change June'13-Sep'13	% Change Oct'13 - Dec'13
Law Enforcement-NV (2-year projection)	8,122	8,122	8,171	8,171	8,027	0.00%	0.60%	0.00%	-1.76%
Labor Force-NV-Seasonally Adjust	1,370,794	1,374,280	1,376,895	1,362,268	1,361,197	0.25%	0.19%	-1.06%	-0.08%
Employment-NV-Seasonally Adjust	1,236,558	1,241,429	1,244,451	1,235,087	1,242,111	0.39%	0.24%	-0.75%	0.57%
Unemployment Rate-NV (Adjst)	9.80%	9.70%	9.60%	9.60%	9.00%	-1.02%	-1.03%	0.00%	-6.25%
Total Personal Income-NV	\$103,076,310,000	n/a	n/a	n/a	\$108,593,284,000	n/a	n/a	n/a	n/a
Per Capita Personal Income	\$37,361	n/a	n/a	n/a	\$38,920.00	n/a	n/a	n/a	n/a

<sup>a</sup> <http://www.fbi.gov/stats-services/crimestats>; rates are per 100,000 persons.<sup>b</sup> Population figures are U.S. Census Bureau provisional estimates as of July 1 for each year.<sup>c</sup> Rate per 100,000 persons.<sup>d</sup> Labor data: Bureau of Labor Statistics <[http://www.bea.gov/newsreleases/regional/spi/sqpi\\_newsrelease.htm](http://www.bea.gov/newsreleases/regional/spi/sqpi_newsrelease.htm)>; Nevada Department of Training, Labor, and Rehabilitation <<http://www.nevadaworkforce.com>>.Income data: <http://www.bea.gov/occupationalprojections>; <http://www.nevadaworkforce.com/cgi/dataanalysis/AreaSelection.asp?tableName=STOCCPR>.<sup>e</sup> Nevada State Demographer, October 2013. Estimates, as July 1st, 2013.<sup>f</sup> United States Census Bureau, 2014. American FactFinder, Monthly Population Estimates for the United States. Annual Percentage Change for the period July 1st, 2012 to June 30, 2013.