



# Nevada Department of Corrections

---

*Recidivism Analysis for the 2011 Release Cohort*

*Prepared by: Alejandra Livingston, MS, MBA*

Often times, correctional administrators inquire about trends in recidivism rates. Recidivism is often thought of a measure of rehabilitation effectiveness. Several factors contribute to re-incarceration, many that interact and that impact an offender's success in the community. It is assumed that to understand recidivism one must understand, at minimum, the major characteristics of inmates. This report is a descriptive analysis that provides the results of the 2011 recidivism study and is intended to provide baseline information of prison inmates that are released from the Nevada Department of Corrections.

# Nevada's Prison Returns, 2011 Release Cohort

**Table 1 – Cases Released**

Gender		Cases					
		Valid		Missing		Total	
		N	Percent	N	Percent	N	Percent
F	Release	717	100.0%	0	0.0%	717	13.6%
M	Release	4554	100.0%	0	0.0%	4554	86.4%

**Table 2 – Recidivism by Gender, Release Type, and Recidivism Status**

			Recidivated		Total
			No	Yes	
Release Type	OUT	Count	1302	367	1669
		% within Release Type	78.0%	22.0%	100.0%
	PAR	Count	2435	1167	3602
		% within Release Type	67.6%	32.4%	100.0%
Total	Count		3737	1534	5271
	% within Release Type		70.9%	29.1%	100.0%

**Table 3-Recidivism by Gender, Release Type, and Recidivism Status**

Gender				Recidivated		Total
				No	Yes	
F	Release Type	OUT	Count	121	20	141
			% within Release Type	85.8%	14.2%	100.0%
		PAR	Count	416	160	576
			% within Release Type	72.2%	27.8%	100.0%
	Total		Count	537	180	717
	% within Release Type		74.9%	25.1%	100.0%	
M	Release Type	OUT	Count	1181	347	1528
			% within Release Type	77.3%	22.7%	100.0%
		PAR	Count	2019	1007	3026
			% within Release Type	66.7%	33.3%	100.0%
	Total		Count	3200	1354	4554
	% within Release Type		70.3%	29.7%	100.0%	

Tables 1- 3 display the number of released offenders by gender, release type, and recidivism status. During 2011, the NDOC released 5,271 offenders of which 717 were females (13.6%) and 4,554 were males (86.40%). Women returned 25.1% of the time and men 29.7% of the time. A total of 1,669 offenders were discharged of which 22.00% returned to prison, and an additional 3,602 were paroled of which 32.4% returned. Overall, discounting the possibility of death, between 2011 and 2014, 29.1% of all offenders released in 2011 returned to the NDOC within 36 months. However, based on life expectancy tables, the NDOC assumes that 3.45% of released offenders will have lost their lives within 36 months after release from prison. If the effect of the possibility of death was accounted for, a smaller release base would be utilized in the calculation, resulting in an overall recidivism rate of 30.14%.

Figure 1

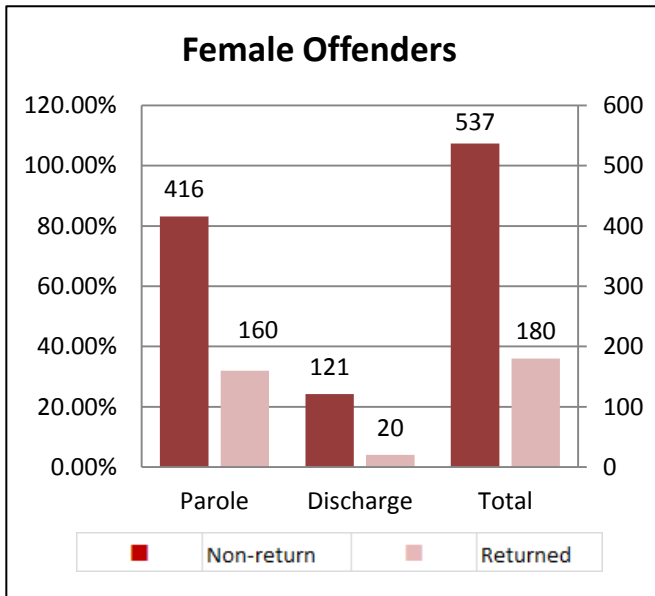


Figure 2

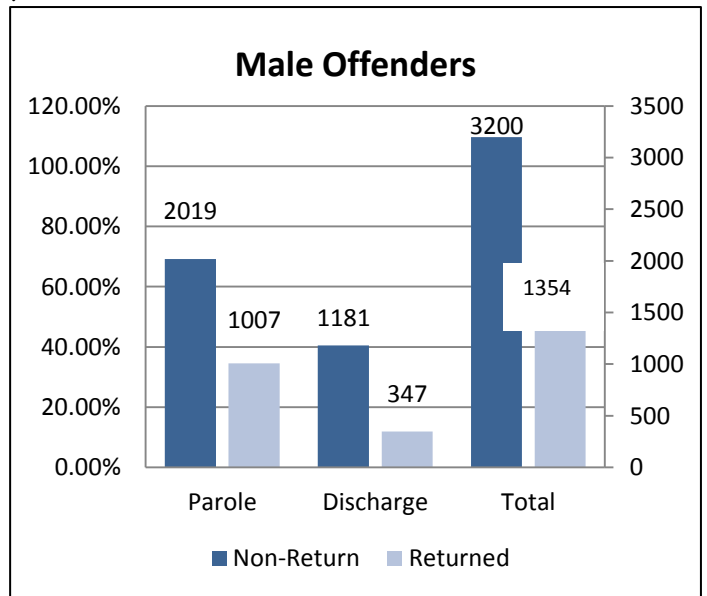


Figure 3

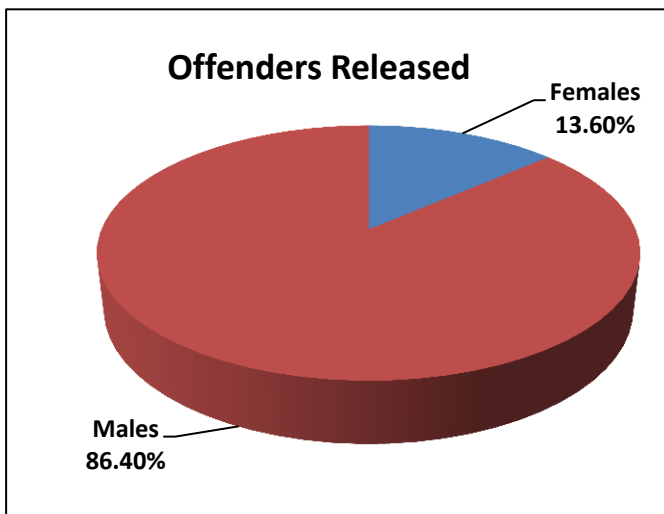
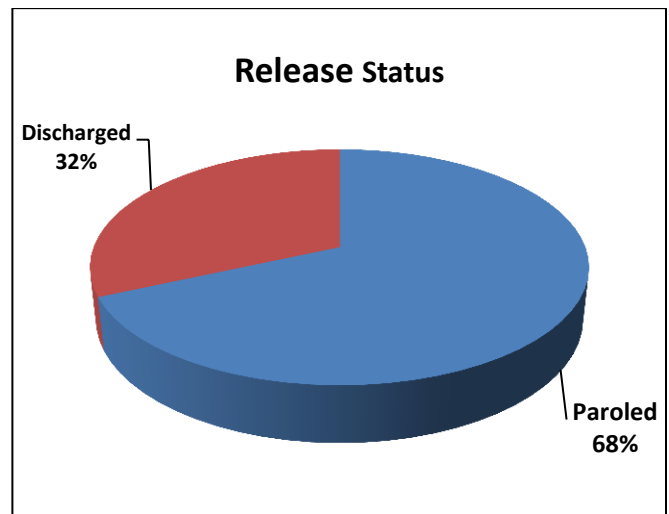


Figure 4

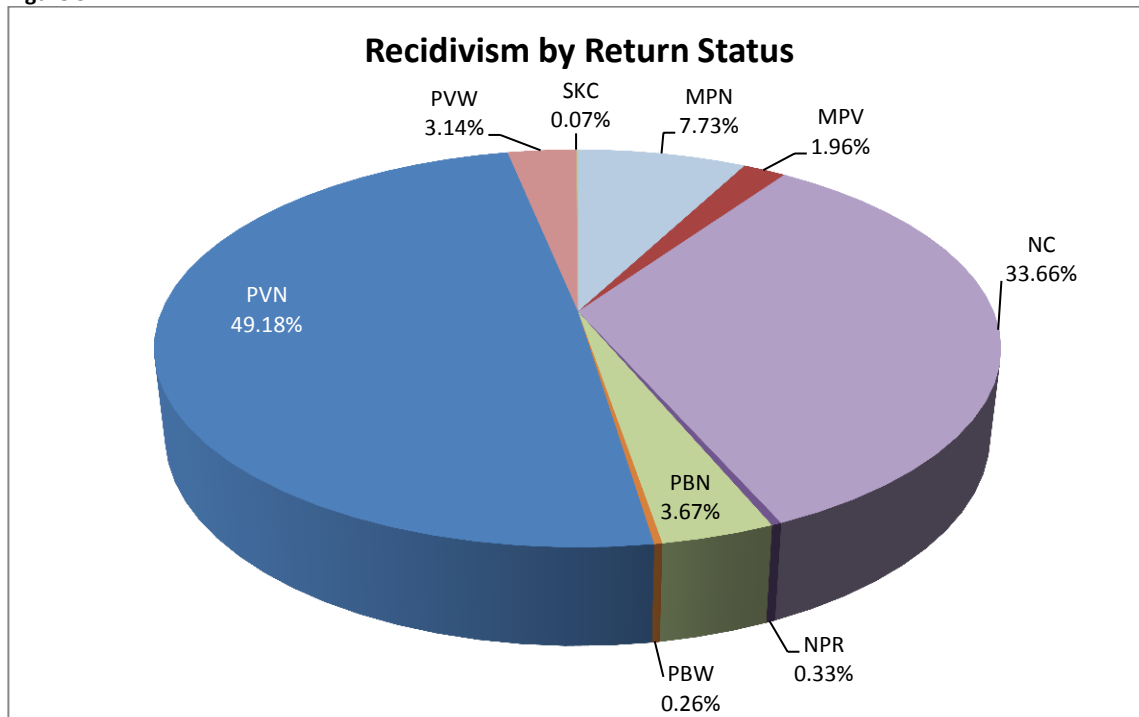


**Table 4 – Release Type and Readmission Status**

Release Type	Re-admission Type									Total
	MPN	MPV	NC	NPR	PBN	PBW	PVN	PVW	SKC	
OUT	0	0	321	5	33	0	0	0	1	367
PAR	118	30	193	0	23	4	751	48	0	1167
Total	118	30	514	5	56	4	751	48	1	1534
%	7.69%	1.96%	33.51%	.33%	3.65%	.26%	48.96%	3.13%	.07%	100.00%

Parole violators without new offenses encompassed 48.96% of all returns and new commitments 33.51% of all offenders that were released on parole in 2011 and that returned by the end of 2014.

**Figure 5**



**Table 5 – Offenders released by Gender, Release Type, and Readmission Status**

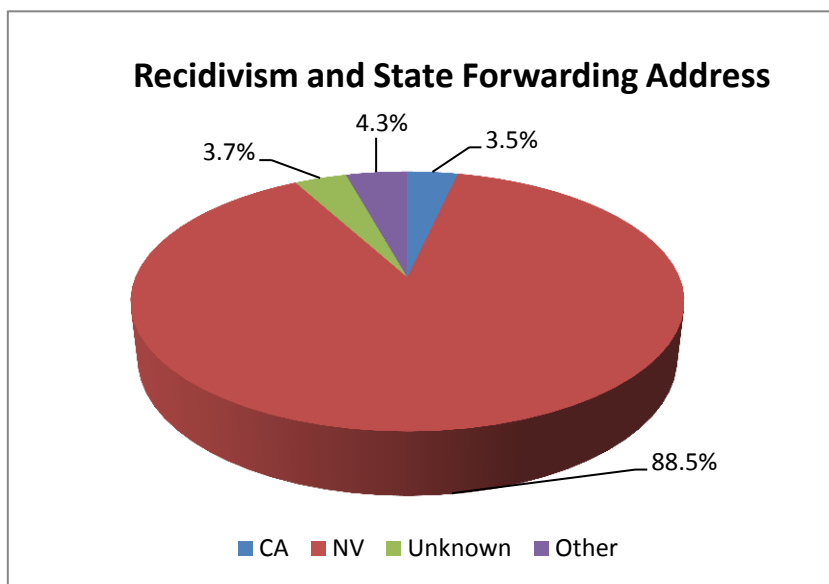
Gender				Recidivated								Total		
				Non-return	MPN	MPV	NC	NPR	PBN	PBW	PVN		PVW	SKC
F	Release Type	OUT	Count	121	0		17		2	1	0	0		141
			% within Release Type	85.8%	0.0%		12.1%		1.4%	0.7%	0.0%	0.0%		100.0%
			% of Total	16.9%	0.0%		2.4%		0.3%	0.1%	0.0%	0.0%		19.7%
	PAR	Count	416	11		14		5	0	126	4			576
			% within Release Type	72.2%	1.9%		2.4%		0.9%	0.0%	21.9%	0.7%		100.0%
			% of Total	58.0%	1.5%		2.0%		0.7%	0.0%	17.6%	0.6%		80.3%
	Total	Count	537	11		31		7	1	126	4			717
			% within Release Type	74.9%	1.5%		4.3%		1.0%	0.1%	17.6%	0.6%		100.0%
			% of Total	74.9%	1.5%		4.3%		1.0%	0.1%	17.6%	0.6%		100.0%
M	Release Type	OUT	Count	1181	0	0	304	5	31	6	0	0	1	1528
			% within Release Type	77.3%	0.0%	0.0%	19.9%	0.3%	2.0%	0.4%	0.0%	0.0%	0.1%	100.0%
			% of Total	25.9%	0.0%	0.0%	6.7%	0.1%	0.7%	0.1%	0.0%	0.0%	0.0%	33.6%
	PAR	Count	2019	107	30	179	0	18	4	625	44	0		3026
			% within Release Type	66.7%	3.5%	1.0%	5.9%	0.0%	0.6%	0.1%	20.7%	1.5%	0.0%	100.0%
			% of Total	44.3%	2.3%	0.7%	3.9%	0.0%	0.4%	0.1%	13.7%	1.0%	0.0%	66.4%
	Total	Count	3200	107	30	483	5	49	10	625	44	1		4554
			% within Release Type	70.3%	2.3%	0.7%	10.6%	0.1%	1.1%	0.2%	13.7%	1.0%	0.0%	100.0%
			% of Total	70.3%	2.3%	0.7%	10.6%	0.1%	1.1%	0.2%	13.7%	1.0%	0.0%	100.0%

**Table 6 – Offenders Released by State Forwarding Address and Recidivism Status**

Offenders by Sate Forwarding State and Recidivism				
State Forwarding Address		Recidivated		Total
		No	Yes	
CA	Count	181	54	235
	% within Recidivated	4.8%	3.5%	4.5%
NV	Count	2874	1358	4232
	% within Recidivated	76.9%	88.5%	80.3%
UNK	Count	453	56	509
	% within Recidivated	12.1%	3.7%	9.7%
OTHER	Count	229	66	295
	% within Recidivated	86.83%	13.17%	4.3%
Total	Count	3737	1534	5271

Table 6 displays the distribution of inmates released during 2011 and the state forwarding address. Of the 5,271 offenders released, 80.3% provided a forwarding address in NV, 4.5% provided an address in California, and 9.7% did not provide an address. The proportion that returned to prison that provided an address in Nevada was 88.5%, for offenders with an address in California the return proportion was 3.5%, and for those without a forwarding address the proportion returned was 3.7%.

**Figure 6**



**Table 7 – Recidivism Rates by Ethnic and Racial Group**

Ethnic and Racial Groups			Recidivated		Total
			No	Yes	
Ethnicity	African	Count	949	522	1471
	American	% within Ethnicity	64.5%	35.5%	100.0%
		% within Recidivated	25.5%	33.5%	27.9%
Asian	Count	90	32	122	
	% within Ethnicity	73.8%	26.2%	100.0%	
	% within Recidivated	2.4%	2.1%	2.3%	
Hispanic	Count	949	203	1152	
	% within Ethnicity	82.4%	17.6%	100.0%	
	% within Recidivated	25.5%	13.0%	21.9%	
Indian	Count	64	26	90	
	% within Ethnicity	71.1%	28.9%	100.0%	
	% within Recidivated	1.7%	1.7%	1.7%	
Unknown	Count	30	21	51	
	% within Ethnicity	58.8%	41.2%	100.0%	
	% within Recidivated	0.8%	1.3%	1.0%	
Caucasian	Count	1633	752	2385	
	% within Ethnicity	68.5%	31.5%	100.0%	
	% within Recidivated	44.0%	48.3%	45.2%	
Total	Count	3715	1556	5271	
	% within Ethnicity	70.5%	29.5%	100.0%	
	% within Recidivated	100.0%	100.0%	100.0%	

Table 7 shows the return rate for each ethnic and racial group and the distribution by race for all returns. Forty-one percent of offenders for whom the ethnicity or racial background is unknown returned to the NDOC, 35.5% of African Americans released also returned, and 28.9% of American Indians released returned to prison.

Table 8 on next page displays recidivism status by gender and ethnicity or race. For the 2011 release cohort of women, the largest prison returns are exhibited by African Americans (29.0%) and the second largest by Asians (25.0%). Among males, those with unknown race or ethnicity exhibit the highest return (38.0%) and African Americans the second highest (35.8%).



Figure 7

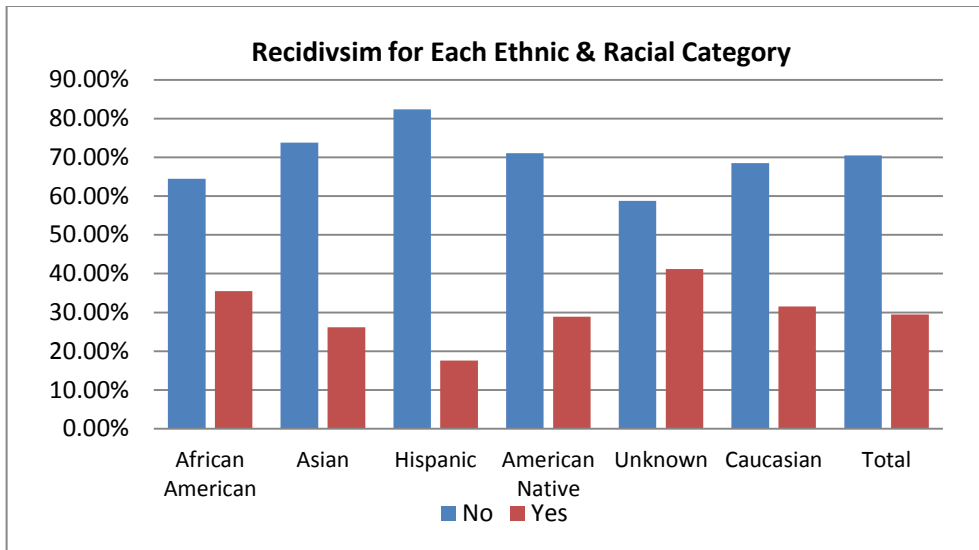


Table 8- Offenders Released by Gender, Ethnicity or Race, and Recidivism Status

Gender	Ethnicity						Total			
	Asian	African American	Caucasian	Hispanic	Indian	Unknown				
F	Recidivated	No	Count	9	115	348	50	14	1	537
		% within Ethnicity	75.0%	71.0%	76.0%	75.8%	77.8%	100.0%	74.9%	
		% of Total	1.3%	16.0%	48.5%	7.0%	2.0%	0.1%	74.9%	
	Yes	Count	3	47	110	16	4	0	180	
		% within Ethnicity	<b>25.0%</b>	<b>29.0%</b>	24.0%	24.2%	22.2%	0.0%	25.1%	
		% of Total	0.4%	6.6%	15.3%	2.2%	0.6%	0.0%	25.1%	
Total	Count	12	162	458	66	18	1	717		
	% within Ethnicity	100.0%	100.0%	100.0%	100.0%	100.0%	100.0%	100.0%		
	% of Total	1.7%	22.6%	63.9%	9.2%	2.5%	0.1%	100.0%		
M	Recidivated	No	Count	81	840	1296	902	50	31	3200
		% within Ethnicity	73.6%	64.2%	67.3%	83.1%	69.4%	62.0%	70.3%	
		% of Total	1.8%	18.4%	28.5%	19.8%	1.1%	0.7%	70.3%	
	Yes	Count	29	469	631	184	22	19	1354	
		% within Ethnicity	26.4%	<b>35.8%</b>	32.7%	16.9%	30.6%	<b>38.0%</b>	29.7%	
		% of Total	0.6%	10.3%	13.9%	4.0%	0.5%	0.4%	29.7%	
Total	Count	110	1309	1927	1086	72	50	4554		
	% within Ethnicity	100.0%	100.0%	100.0%	100.0%	100.0%	100.0%	100.0%		
	% of Total	2.4%	28.7%	42.3%	23.8%	1.6%	1.1%	100.0%		

**Table 9 – Offenders Released by Offense Groups and Recidivism Status**

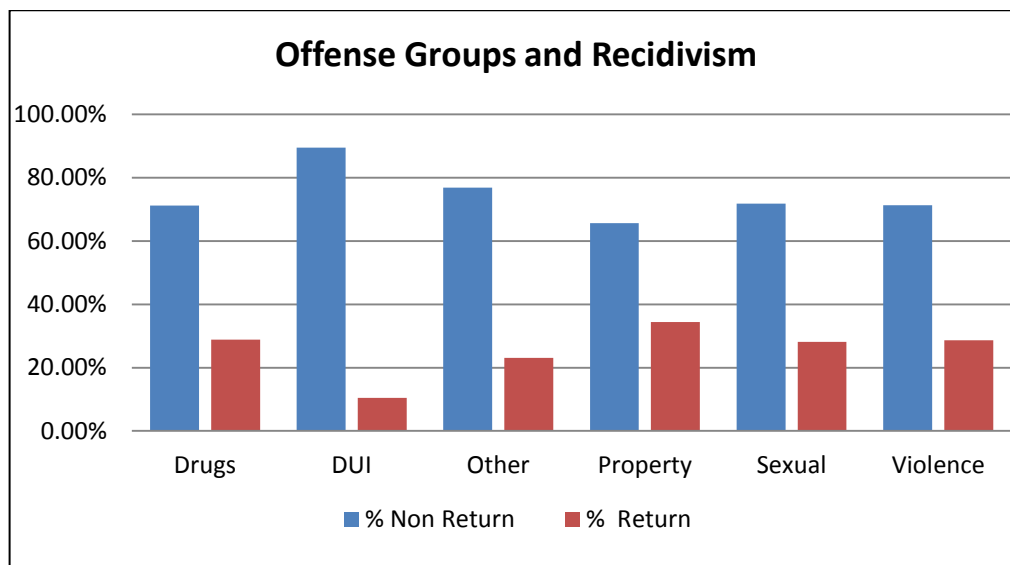
			Recidivated		Total
			No	Yes	
Offense Group	Drugs	Count	1047	424	1471
		% within Offense Group	71.2%	<b>28.8%</b>	100.0%
		% of Total	19.9%	8.0%	27.9%
	DUI	Count	205	24	229
		% within Offense Group	89.5%	10.5%	100.0%
		% of Total	3.9%	0.5%	4.3%
	Other	Count	50	15	65
		% within Offense_Group	76.9%	23.1%	100.0%
		% of Total	0.9%	0.3%	1.2%
Property	Count	784	411	1195	
	% within Offense Group	65.6%	<b>34.4%</b>	100.0%	
	% of Total	14.9%	7.8%	22.7%	
Sexual	Count	288	113	401	
	% within Offense Group	71.8%	28.2%	100.0%	
	% of Total	5.5%	2.1%	7.6%	
Violence	Count	1363	547	1910	
	% within Offense Group	71.4%	<b>28.6%</b>	100.0%	
	% of Total	25.9%	10.4%	36.2%	
Total	Count	3737	1534	5271	
	% within Offense Group	70.9%	29.1%	100.0%	
	% of Total	70.9%	<b>29.1%</b>	100.0%	

Table 9 exhibits the distribution of offenders released during 2011 broken down by offense group. The NDOC utilizes six offense categories to group its offenders: 1) Drug, 2) DUI, 3) Other, 4) Property, 5) Sexual, and 6) Violence. The largest group of releases was composed of violent offenders representing 36.2% of all released offenders. Drug offenders represented 27.9% and property offenders 22.7% of releases. Offenders in the property offense group returned 34.4% of the time, drug offenders 28.8% of the time, and violent offenders had a re-incarceration rate of 28.6%.

**Table 10 – Recidivism by Gender and Offense Group**

Gender				Offense Group						
				Drugs	DUI	Other	Property	Sexual	Violence	Total
F	Recidivated	No	Count	181	28	4	196	7	121	537
			% within Offense Group	73.3%	87.5%	57.1%	71.0%	87.5%	82.3%	74.9%
			% of Total	25.2%	3.9%	0.6%	27.3%	1.0%	16.9%	74.9%
	Yes	Count	66	4	3	80	1	26	180	
		% within Offense Group	26.7%	12.5%	<b>42.9%</b>	<b>29.0%</b>	12.5%	17.7%	25.1%	
		% of Total	9.2%	0.6%	0.4%	11.2%	0.1%	3.6%	25.1%	
	Total	Count	247	32	7	276	8	147	717	
		% within Offense Group	100.0%	100.0%	100.0%	100.0%	100.0%	100.0%	100.0%	
		% of Total	34.4%	4.5%	1.0%	38.5%	1.1%	20.5%	100.0%	
M	Recidivated	No	Count	866	177	46	588	281	1242	3200
			% within Offense Group	70.8%	89.8%	79.3%	64.0%	71.5%	70.4%	70.3%
			% of Total	19.0%	3.9%	1.0%	12.9%	6.2%	27.3%	70.3%
	Yes	Count	358	20	12	331	112	521	1354	
		% within Offense Group	29.2%	10.2%	20.7%	<b>36.0%</b>	28.5%	29.6%	29.7%	
		% of Total	7.9%	0.4%	0.3%	7.3%	2.5%	11.4%	29.7%	
	Total	Count	1224	197	58	919	393	1763	4554	
		% within Offense Group	100.0%	100.0%	100.0%	100.0%	100.0%	100.0%	100.0%	
		% of Total	26.9%	4.3%	1.3%	20.2%	8.6%	38.7%	100.0%	

**Figure 8**



**Table 11 – Offenders Released by Gender and Age Group**

				Release Age Range						Total		
				0-18	18-27	28-37	38-47	48-57	58-67		68-77	78-87
F	Recidivated? No	Count		128	179	155	63	10	2		537	
		% within Release Age Range		73.6%	71.0%	77.5%	80.8%	90.9%	100.0%		74.9%	
		% of Total		17.9%	25.0%	21.6%	8.8%	1.4%	0.3%		74.9%	
	Yes	Count		46	73	45	15	1	0		180	
		% within Release Age Range		<b>26.4%</b>	<b>29.0%</b>	22.5%	19.2%	9.1%	0.0%		25.1%	
		% of Total		6.4%	10.2%	6.3%	2.1%	0.1%	0.0%		25.1%	
	Total	Count		174	252	200	78	11	2		717	
		% within Release Age Range		100.0%	100.0%	100.0%	100.0%	100.0%	100.0%		100.0%	
		% of Total		24.3%	35.1%	27.9%	10.9%	1.5%	0.3%		100.0%	
	M	Recidivated? No	Count	0	880	1035	733	425	103	23	1	3200
			% within Release Age Range	0.0%	68.0%	71.3%	69.3%	72.0%	78.0%	88.5%	100.0%	70.3%
			% of Total	0.0%	19.3%	22.7%	16.1%	9.3%	2.3%	0.5%	0.0%	70.3%
Yes		Count	1	415	416	325	165	29	3	0	1354	
		% within Release Age Range	100.0%	<b>32.0%</b>	28.7%	<b>30.7%</b>	28.0%	22.0%	11.5%	0.0%	29.7%	
		% of Total	0.0%	9.1%	9.1%	7.1%	3.6%	0.6%	0.1%	0.0%	29.7%	
Total		Count	1	1295	1451	1058	590	132	26	1	4554	
		% within Release Age Range	100.0%	100.0%	100.0%	100.0%	100.0%	100.0%	100.0%	100.0%	100.0%	
		% of Total	0.0%	28.4%	31.9%	23.2%	13.0%	2.9%	0.6%	0.0%	100.0%	

The two largest age group categories for offenders released from the Nevada Department of Corrections in 2011 were the 28-37 and 38-47 for females and 18-27 and 28-37 for males. Recidivism tracks offenders that return within 36 months of release; thus, it is assumed that they could be up to three years older when they return. Table 11 exhibits the return rates for each group based on the age at release. It can be noted that, for women, there is a difference in ranking, given that the largest age group of recidivists was 28-37 years of age at time of release, and the second largest group was 18-27. However, for males, the largest age group of recidivists is composed of 18-27 year olds, and the second largest group is composed of 38-47 year olds at time of release. The patterns can be identified in the two pyramid charts below. More cases are seen in the age

group 18 to mid-30s. Then, it can be seen that the bars extend outward for age 40, but not as much as with the older age groups, and gradually dissipate when the release age approaches 60.

Figure 9

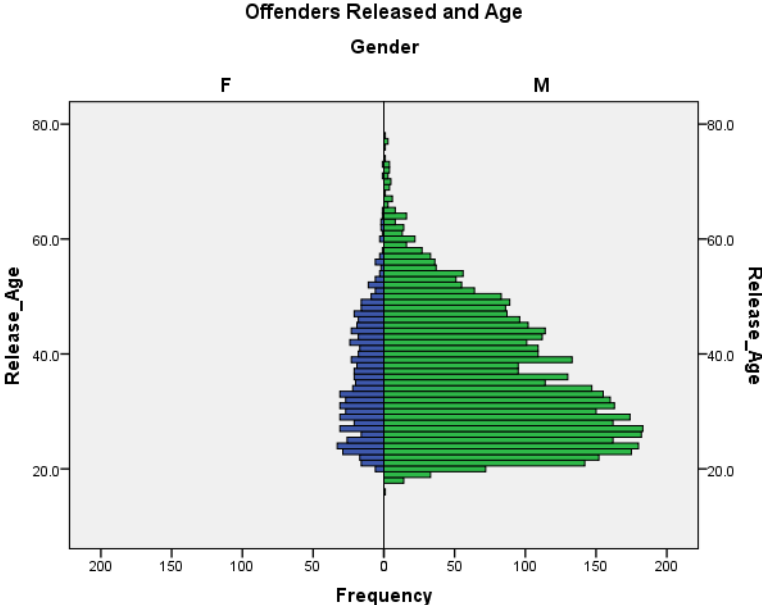
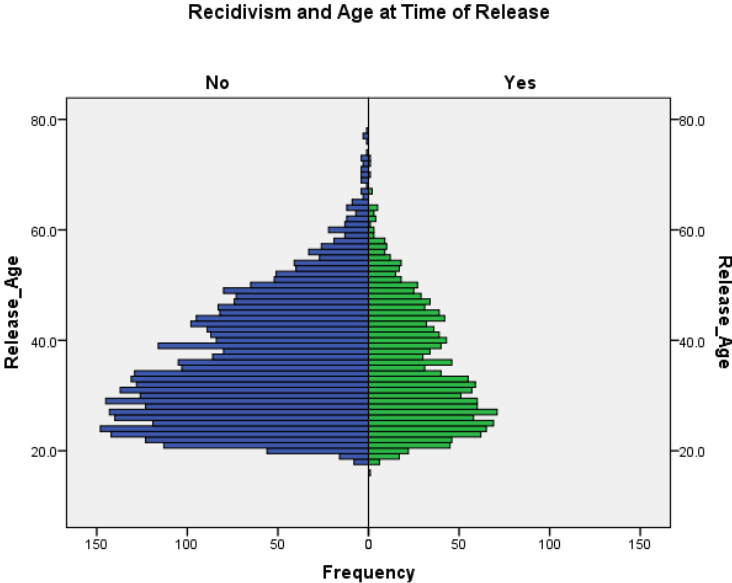


Figure 10



**Table 12 – Offender Released by recidivism Status, Release Age, and Offense Group**

Recidivated?	Release_Age_Range	Offense_Group						Total
		Drugs	DUI	Other	Property	Sexual	Violence	
No	18-27	259	25	21	289	30	384	1008
	28-37	362	74	18	255	61	444	1214
	38-47	275	53	8	154	88	310	888
	48-57	134	37	3	77	69	168	488
	58-67	16	11	0	9	28	49	113
	68-77	1	4	0	0	12	8	25
	78-87	0	1	0	0	0	0	1
	<b>Total</b>		<b>1047</b>	<b>205</b>	<b>50</b>	<b>784</b>	<b>288</b>	<b>1363</b>
Yes	0-18	0	0	0	0	0	1	1
	18-27	89	10	7	171	13	171	461
	28-37	149	5	5	134	28	168	489
	38-47	135	5	3	72	36	119	370
	48-57	50	2	0	29	22	77	180
	58-67	1	2	0	4	13	10	30
	68-77	0	0	0	1	1	1	3
	<b>Total</b>		<b>424</b>	<b>24</b>	<b>15</b>	<b>411</b>	<b>113</b>	<b>547</b>
Total	0-18	0	0	0	0	0	1	1
	18-27	348	35	28	460	43	555	1469
	28-37	511	79	23	389	89	612	1703
	38-47	410	58	11	226	124	429	1258
	48-57	184	39	3	106	91	245	668
	58-67	17	13	0	13	41	59	143
	68-77	1	4	0	1	13	9	28
	78-87	0	1	0	0	0	0	1
<b>Total</b>		<b>1471</b>	<b>229</b>	<b>65</b>	<b>1195</b>	<b>401</b>	<b>1910</b>	<b>5271</b>

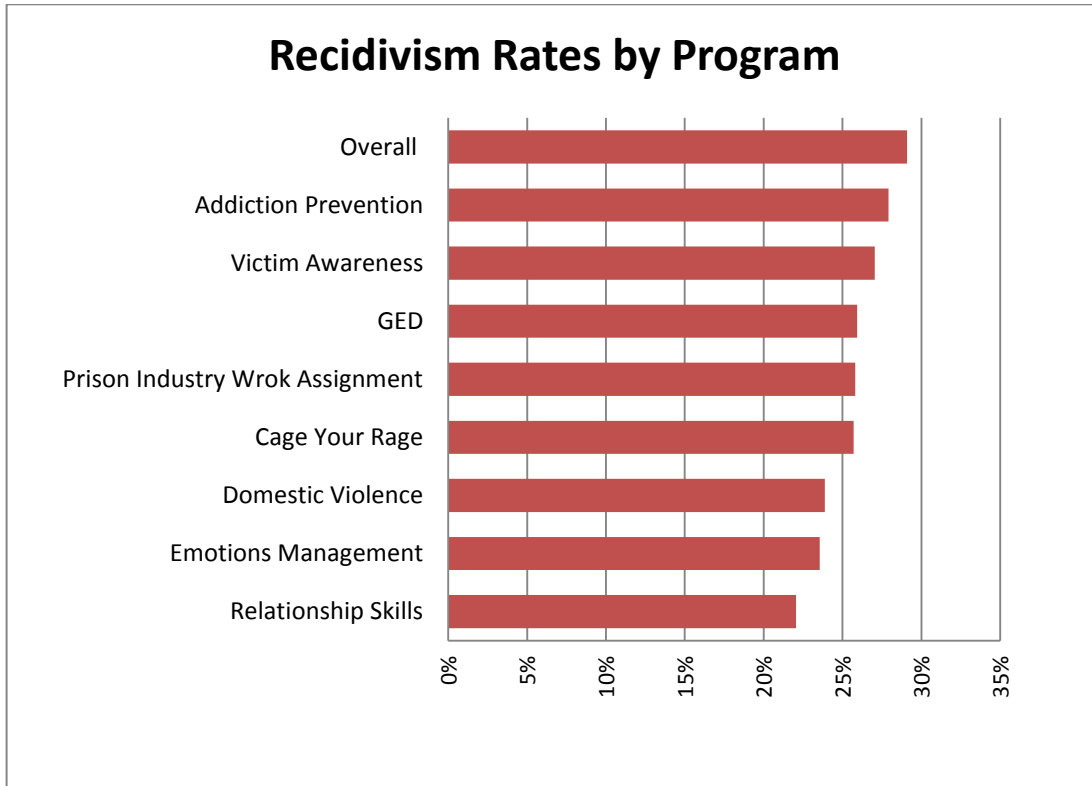
The concentration of offenders that return to prison by age at time of release and offense group can be seen in the table above. Property and violent offenders who are released between the ages 18-27 represent 11.5% of all recidivists, violent offenders ages 28-37 represent 10.95%, and drug offenders ages 28-37 represent 9.71%. In terms of age groups, offenders released when they were 18-27 and 28-37 years old represented 31.88% and 30.05% of recidivists.

**Table 13 – Recidivism Rates by Program**

Program	Rate
Relationship Skills	22.05%
Emotions Management	23.56%
Domestic Violence	23.87%
Cage Your Rage	25.70%
Prison Industry Work Assignment	25.81%
GED	25.93%
Victim Awareness	27.04%
Addiction Prevention	27.92%
Overall	29.10%

The recidivism rates of offenders by program participation for the release cohort of 2011 were analyzed and ranked as shown in Table 13. Prison inmates released in 2011 and who participated in these programs had recidivism rates lower than the overall rate of 29.10%. There are many factors that affect recidivism, and a good majority of offenders participate in multiple programs for which they can earn credits towards their sentences. Thus, the effect of each individual program requires further analysis.

**Figure 11**



It is important to note that it is the interaction of various factors that needs to be investigated when analyzing recidivism and no factor should be believed to reduce or increase recidivism in isolation. This report highlights descriptive statistical information by program type only, and the interactive effect of the completion of multiple programs cannot be determined. Overall, Nevada’s recidivism rate for offenders released during 2011 is 29.10% and this represents a reduction of .02 basis points relative to 2010.